

# SOUTHERN GROVE MASTER PLAN COMMUNITY WORKSHOP

[www.CityofPSL.com/SouthernGrove](http://www.CityofPSL.com/SouthernGrove)





[www.CityofPSL.com/SouthernGrove](http://www.CityofPSL.com/SouthernGrove)

Southern Grove is one of Florida's most **unique** job opportunity areas for

- large-scale manufacturing,
- logistics and
- retail development.



[www.CityofPSL.com/SouthernGrove](http://www.CityofPSL.com/SouthernGrove)

Southern Grove is a **3,605-acre** Development of Regional Impact (DRI) south of Tradition Parkway.

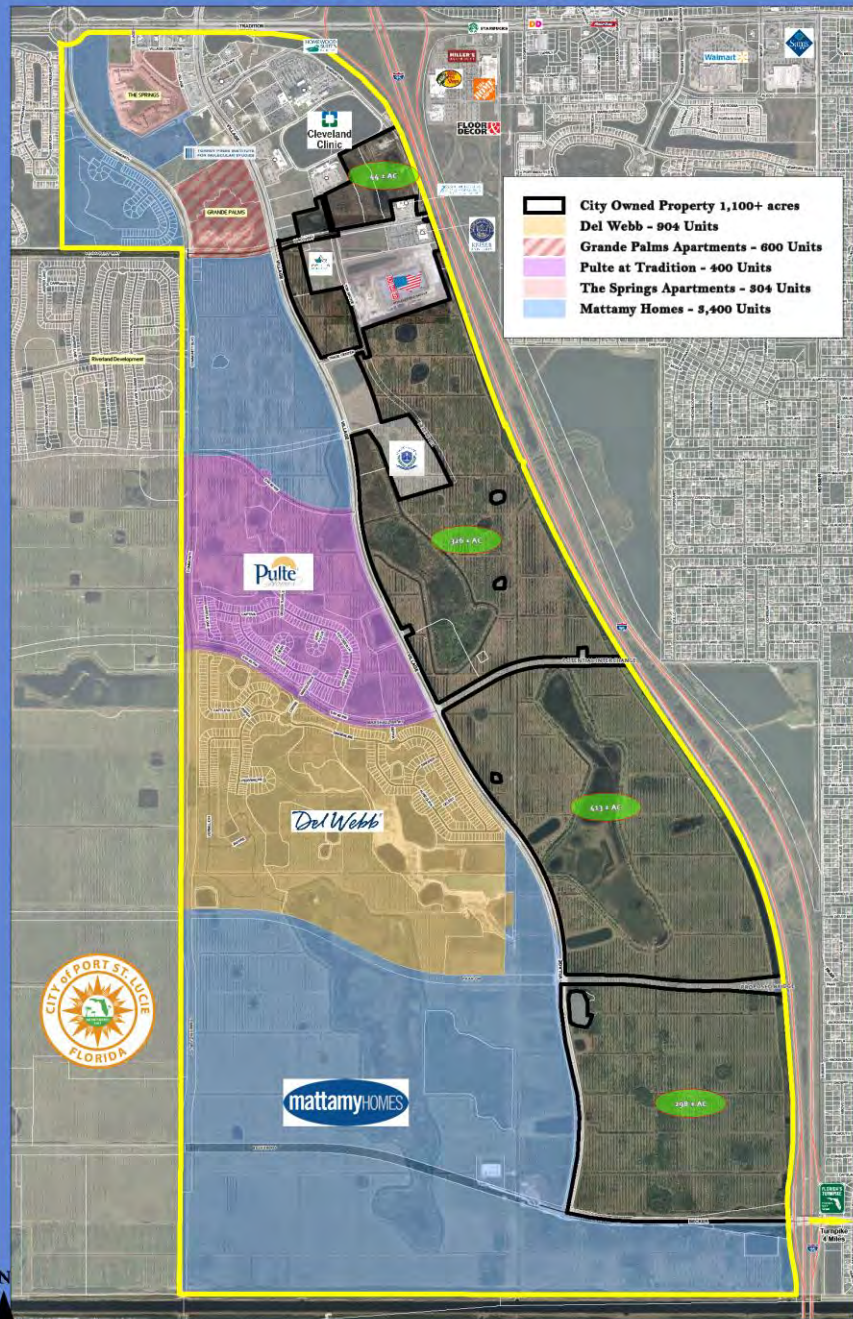


[www.CityofPSL.com/SouthernGrove](http://www.CityofPSL.com/SouthernGrove)



[www.CityofPSL.com/SouthernGrove](http://www.CityofPSL.com/SouthernGrove)

## SOUTHERN GROVE

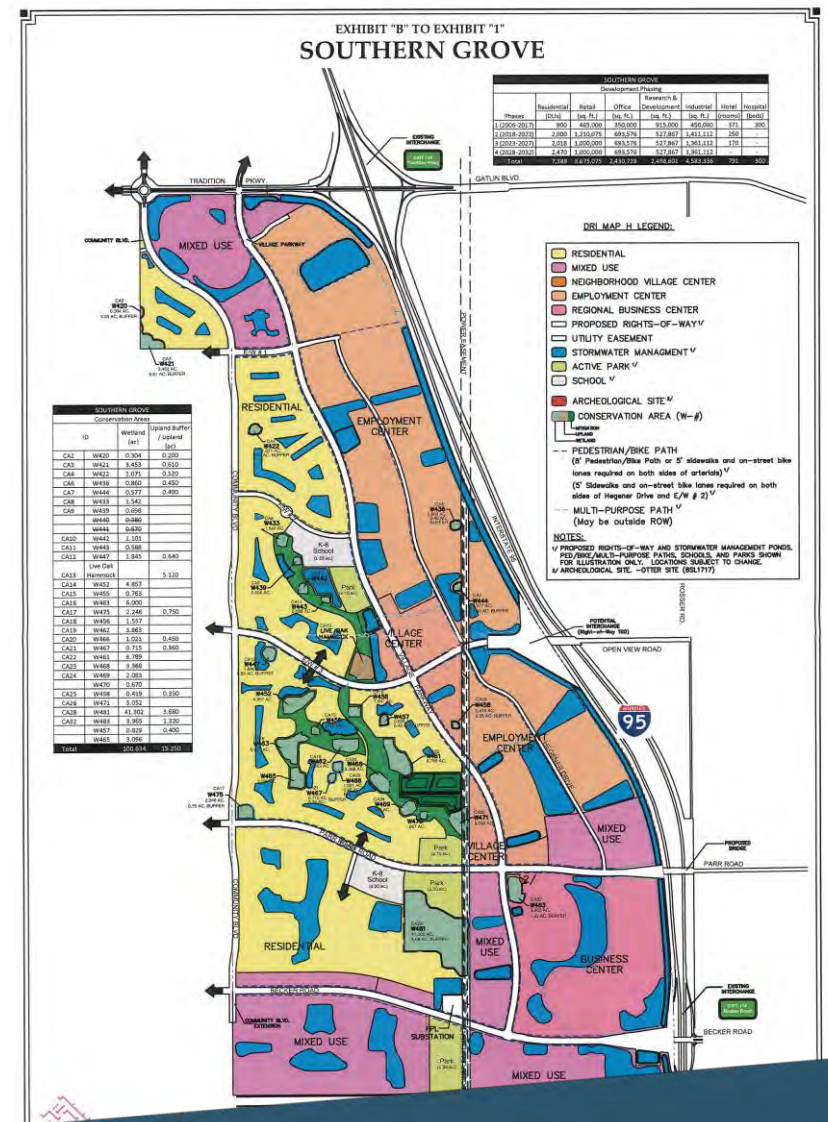


The Southern Grove section is the land to the **east** and **west** of Village Parkway, **south** of Tradition Parkway and **north** of the Martin County line by Becker Road.

[www.CityofPSL.com/SouthernGrove](http://www.CityofPSL.com/SouthernGrove)

This land is approved for a **mix of uses**, including:

- research and development,
- industrial,
- commercial and
- multi-family residential units.

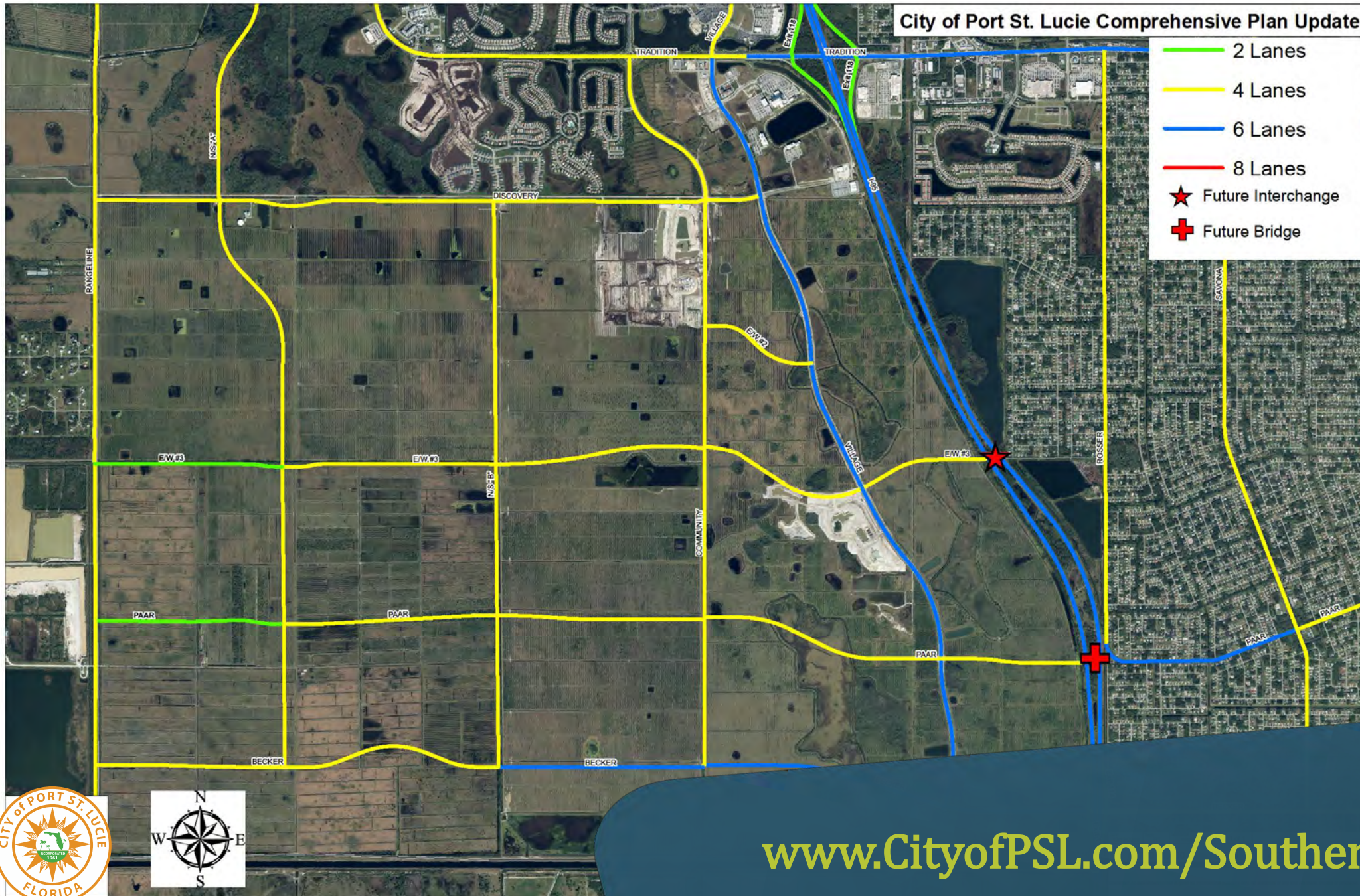




[www.CityofPSL.com/SouthernGrove](http://www.CityofPSL.com/SouthernGrove)

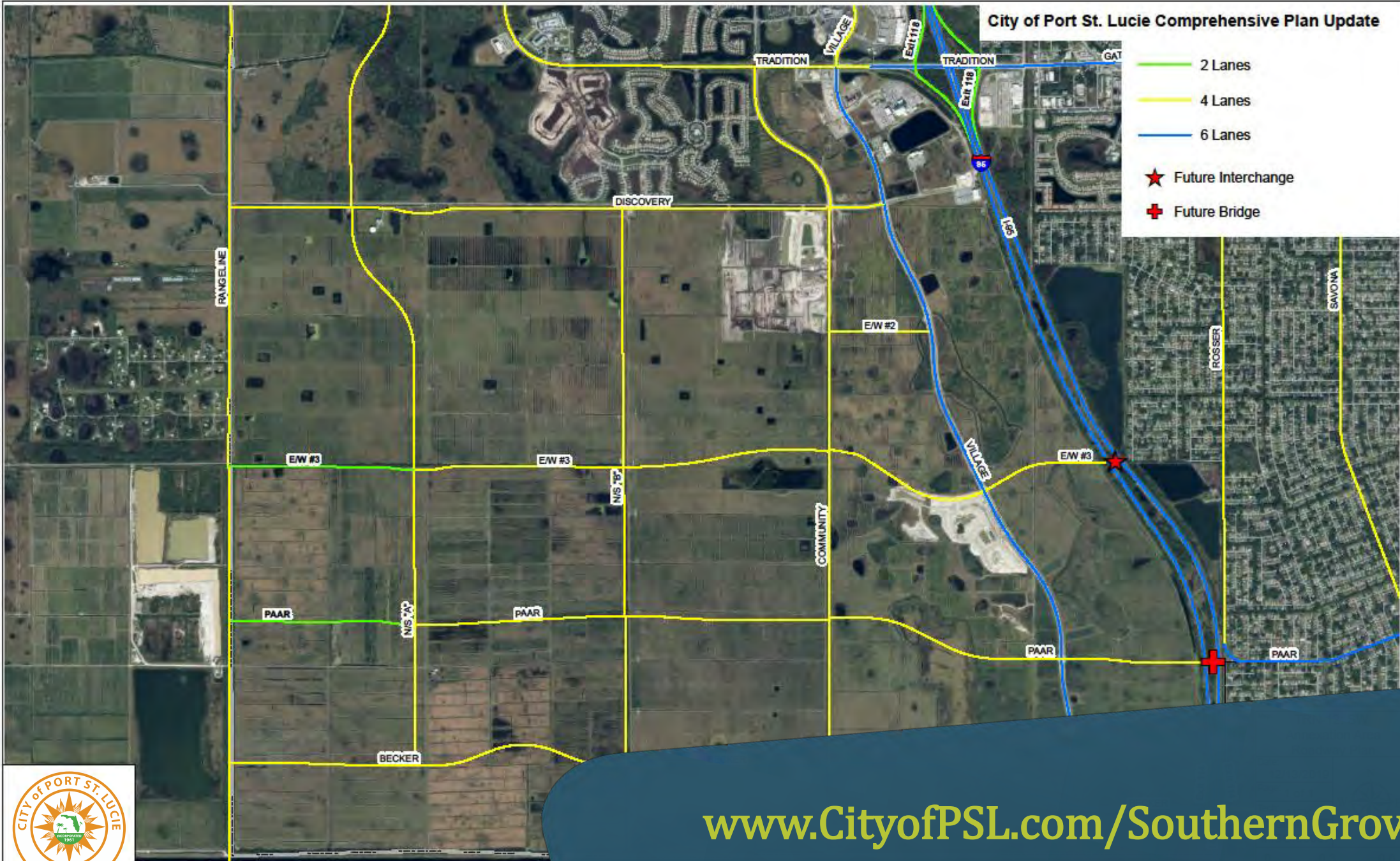


# City of Port St. Lucie Comprehensive Plan Update



[www.CityofPSL.com/SouthernGrove](http://www.CityofPSL.com/SouthernGrove)

- 2 Lanes
- 4 Lanes
- 6 Lanes
- ★ Future Interchange
- + Future Bridge



Data Source: City of Port St. Lucie Planning & Zoning Dept., 2011

[www.CityofPSL.com/SouthernGrove](http://www.CityofPSL.com/SouthernGrove)



[www.CityofPSL.com/SouthernGrove](http://www.CityofPSL.com/SouthernGrove)