



# Public Meeting #1

OCTOBER 8, 2020

PREPARED BY

**MARLIN**



# Welcome & Team Introductions



**MARLIN**




Cotleur &  
Hearing

*Firefly*  
public relations & marketing

village  
GREEN DR  
PORT ST. LUCIE

# Presentation Format

- Virtual Meeting Today via 
- Microphones Will Be Muted for Duration of Presentation
- Polling Questions Throughout Presentation
- Q & A Session **After** Presentation
  - Utilize the Q&A button to ask questions and make comments (Located at Bottom Center of Your Screen)
  - Staff will moderate questions and comments, questions and comments will be addressed at the end of the presentation, as applicable
- A copy of this presentation will be made available on the City's website

# Agenda

- 1 Project Overview
  - 2 Community Assets
  - 3 Physical Conditions
  - 4 Corridor Opportunities
  - 5 Next Steps
- Questions/Comments







1

# Project Overview



# Poll 1

How do you use Village Green Drive ? (select all that apply)



Vehicle

1



Walk

2



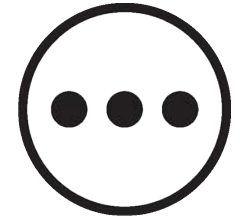
Bicycle

3



Transit

4



Other

5



# Project Tasks

## **Task 1: Meetings, Coordination, & Public Involvement**

- Business Canvassing Day - September 10, 2020
- 1st Public Meeting - October 8, 2020 **TODAY**
- 2nd Public Meeting - February 18, 2021

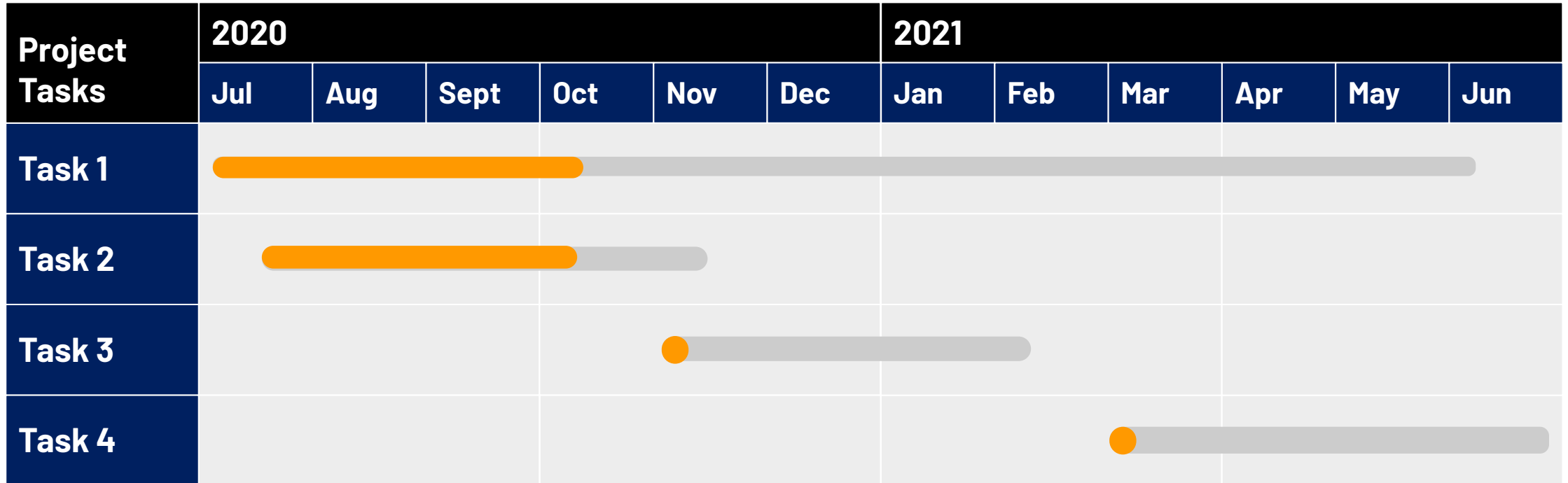
## **Task 2: Data Collection & Analysis**

- Review of Plans, Documents, and Codes
- Field Inventory & Review
- Traffic, Pedestrian, & Bicycle Data Collection
- Walking Audit - October 1, 2020
- Analysis

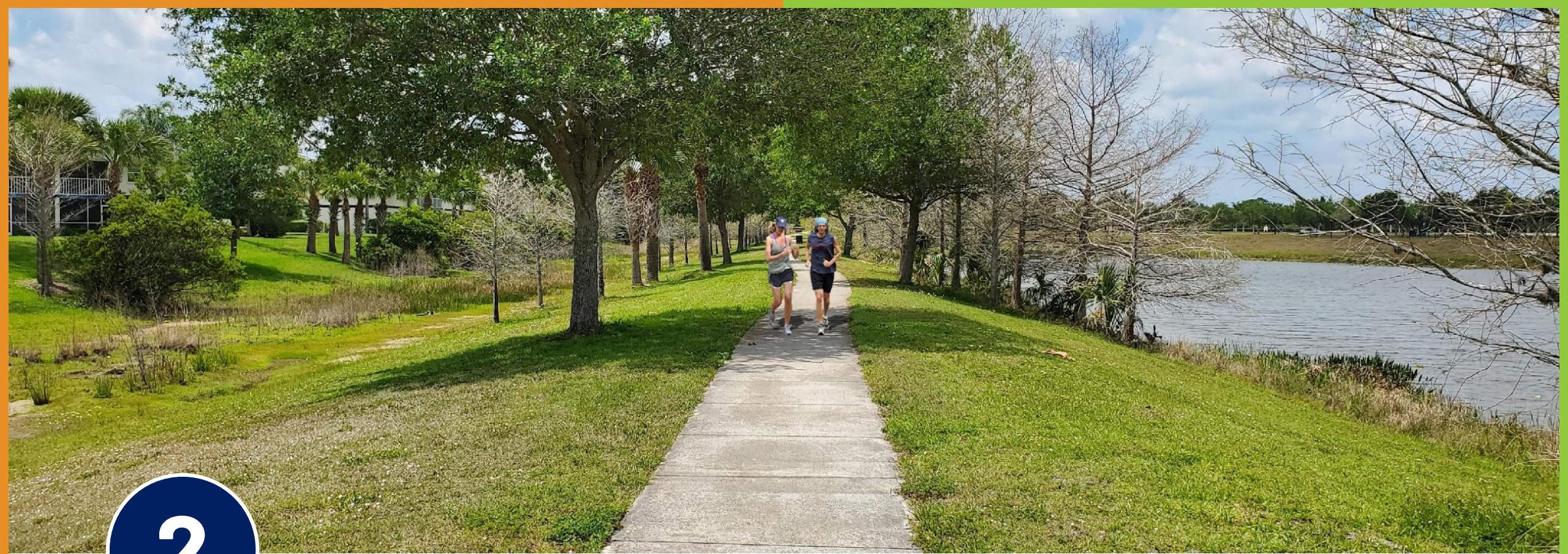
## **Task 3: Design Concepts**

## **Task 4: Final Master Plan**

# Project Schedule



TODAY ▲



2

# Community Assets

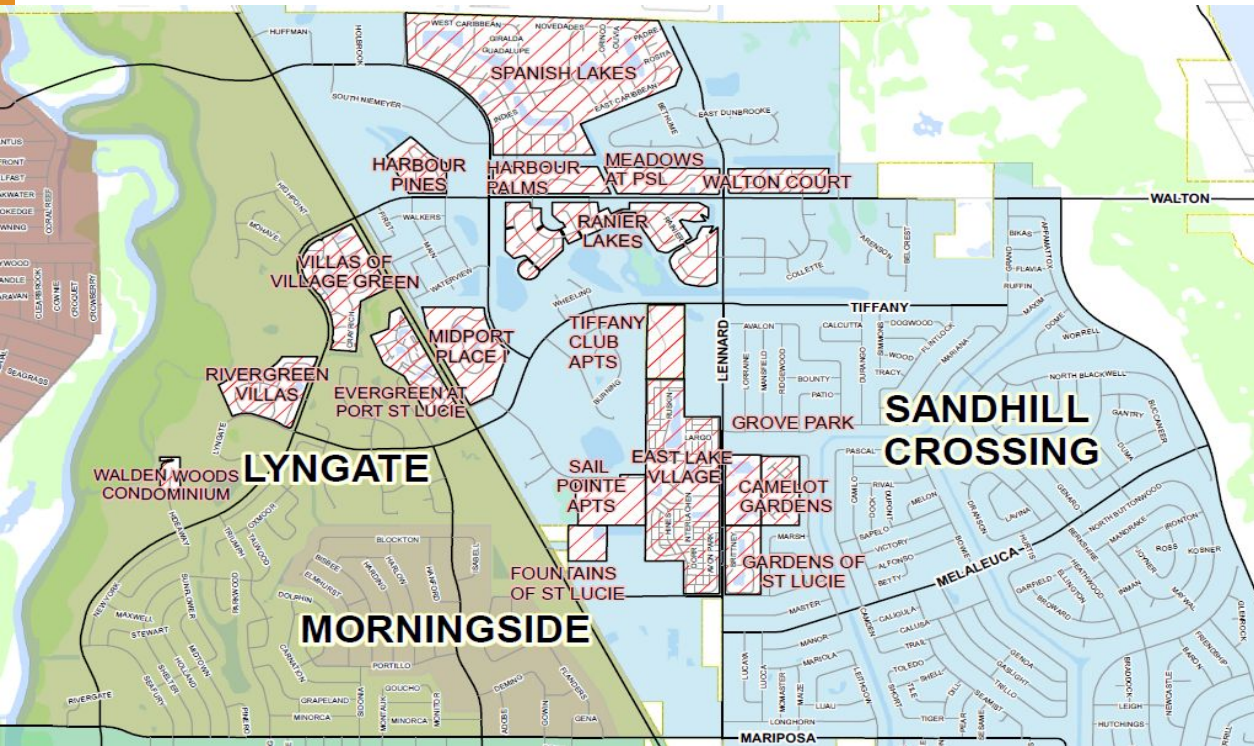
# Poll 2

## What is your greatest community asset? (select one)

1. The Neighborhoods
2. The Businesses
3. The Medical Complex
4. City Center
5. Parks, Trails, Natural Areas
6. Water
7. Other



# Neighborhoods



- Spanish Lakes
- Harbour Pines
- Harbour Palms
- Rainier Lakes
- Midport Place

# Local & Regional Destinations

- MidFlorida Event Center
- St. Lucie Medical Center
- Annex Center
- Industrial Park
- Savannas Preserve State Park
- Woodstork Trail



# Multimodal Access

- Pedestrian
- Bicycle
- Transit
- Vehicular



# Community Engagement

- Planning Studies
- Roadway Projects
- Community Redevelopment
- Crosstown Parkway



City of Port St. Lucie, Florida

Conceptual Design of  
Town Center in Village Green

**Community Redevelopment Plan**  
April 2010  
Prepared in conjunction with  
The City of Port St. Lucie Planning and Zoning Department

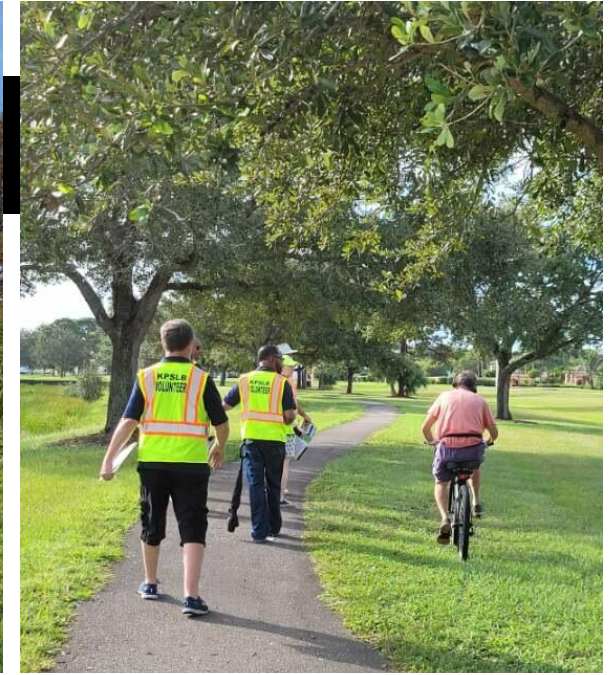
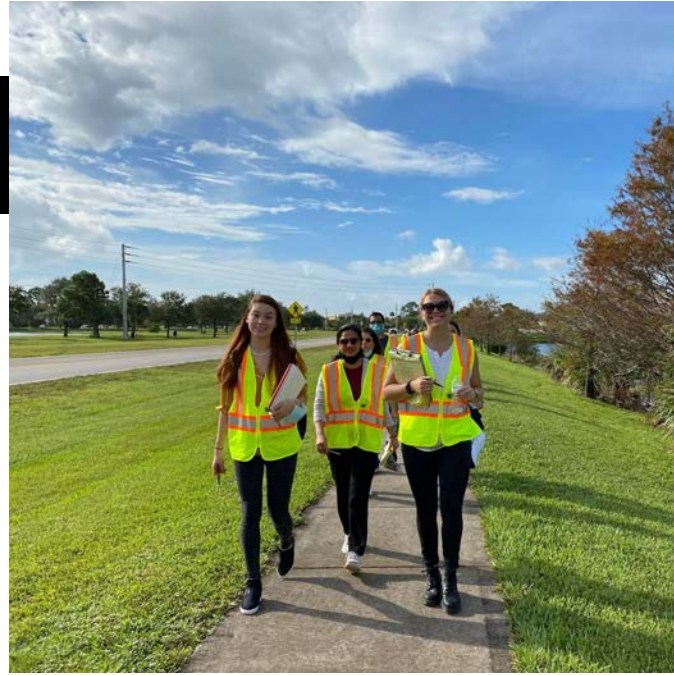


**CITY OF PORT ST. LUCIE**  
PLANNING AREA 7 |  
NEIGHBORHOOD ACTION PLAN  
DRAFT MARCH 2017





# Walking Audit October 1, 2020







3

# Physical Conditions

# Poll 3

**Do you live or work within ½-mile radius of Village Green Drive?**



Yes



No



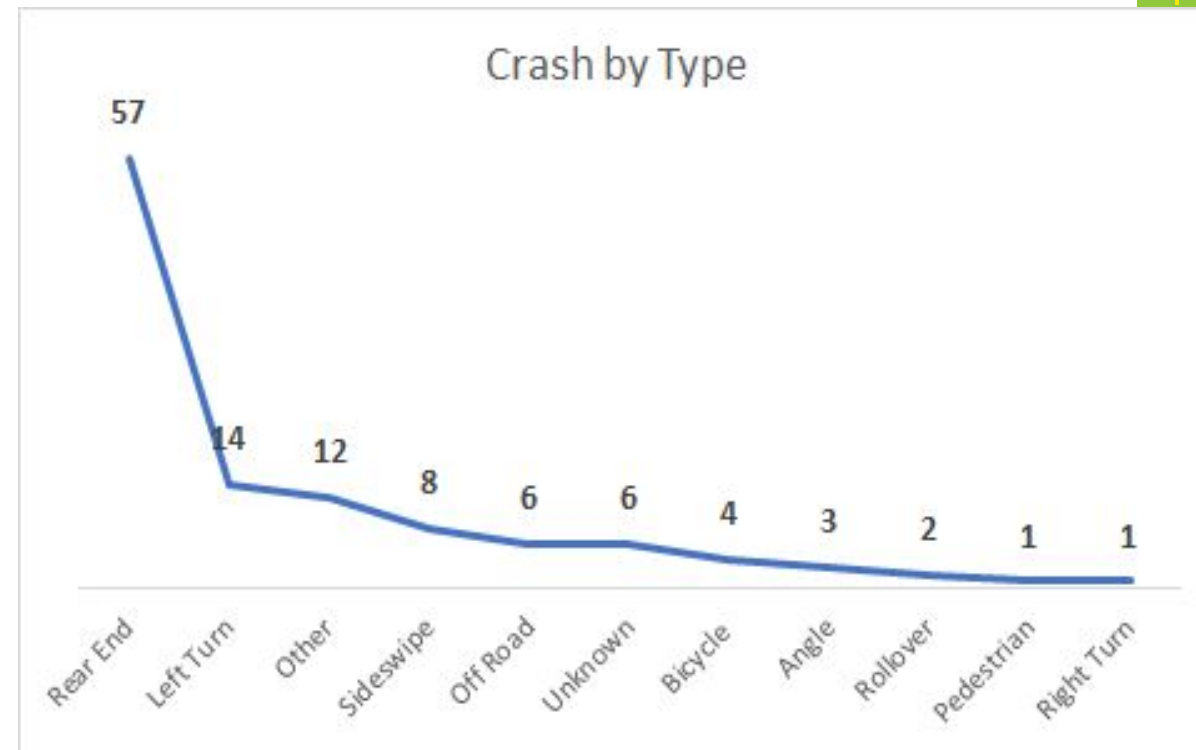
# Traffic Conditions

Segment	Lanes*	Average Daily Traffic (ADT)	Maximum ADT
W. of South Niemeyer Cir	4 LD	12,709	13,700
W of Industrial Blvd	4 LD	10,883	13,100
S of Niemeyer Cir	4 LD	11,311	11,600
S of Walton Rd	2 L	3,877	6,900
N of SE Tiffany Ave	2 L	4,138	6,900

\*L - Lane, LD - Lane Divided

# Corridor Collisions (2015-2019)

- 114 Crashes between 2015 - 2019
- Peak Hour for Crashes is between 4 - 5 PM
- 25% of Crashes have resulted in Injury
- Rear End Crashes are Most Common
- No fatalities



# Intersections

## Signalized Intersections

### US 1

- Dedicated Turning Lanes
- Pedestrian Refuge Islands

### Walton Rd

- Wide Curb Radii
- Dedicated Turning Lanes
- High Visibility Crosswalks
- Collision Hotspot

## Unsignalized Intersections

### SE Tiffany Ave

- Dedicated Turning Lanes
- No Pedestrian Crossings
- Wide Curb Radii



# Pedestrian Conditions

## Findings:

- Missing Sidewalks
- Long Distances between Crosswalks
- Lack of Streets Trees & Landscaping
- Lack of Pedestrian Lighting
- Missing Crosswalks at SE Tiffany Ave
- Lack of Curb Extensions or Pedestrian Refuge at Walton Rd



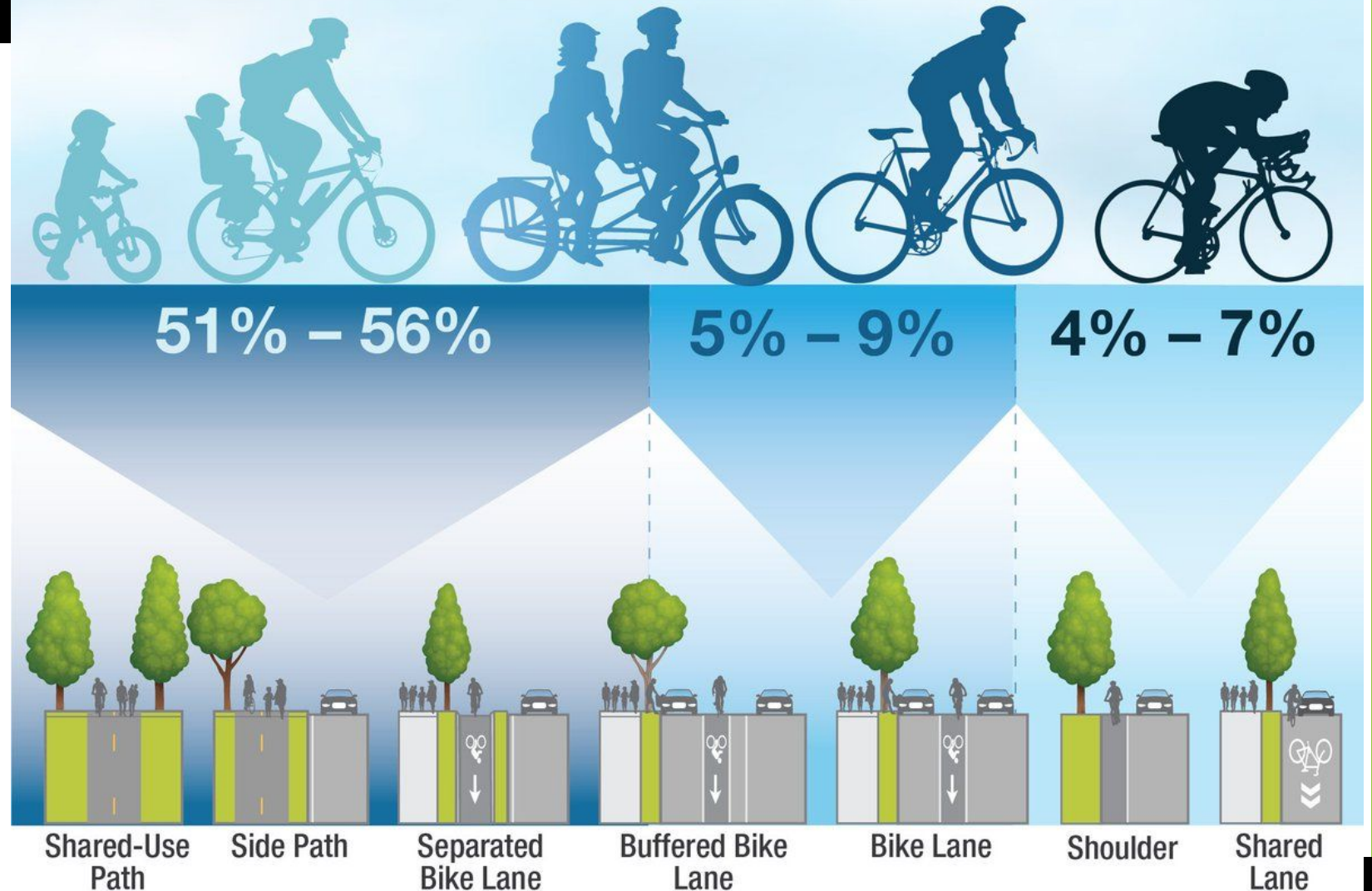


# Bicycle Conditions

## Findings:

- Lack of bicycle facilities
- Bike share station at MidFlorida Event Center
- 12-foot shared use path on Walton Rd

## WHICH FACILITIES WILL MAKE RIDERS FEEL SAFER?



# Transit Conditions

## Findings:

- Serviced by Route 4 (Port St. Lucie Trolley)
- One Hour Service
- Seating is Provided / No Shade
- Signage Missing for SB Stop
- Limited Access to Stop
- Connections to Route 1 Nearby





# Northern Gateway

## Industrial, Commercial, and Residential Land Uses

### Street Character

Few trees in the median and fronting buildings. Buildings are setback with parking in front.

### Street Size & Lanes

Right-of-way is approximately 100 feet. There are 4 travel lanes, 2 in each direction separated by a median.

### Multimodal Access

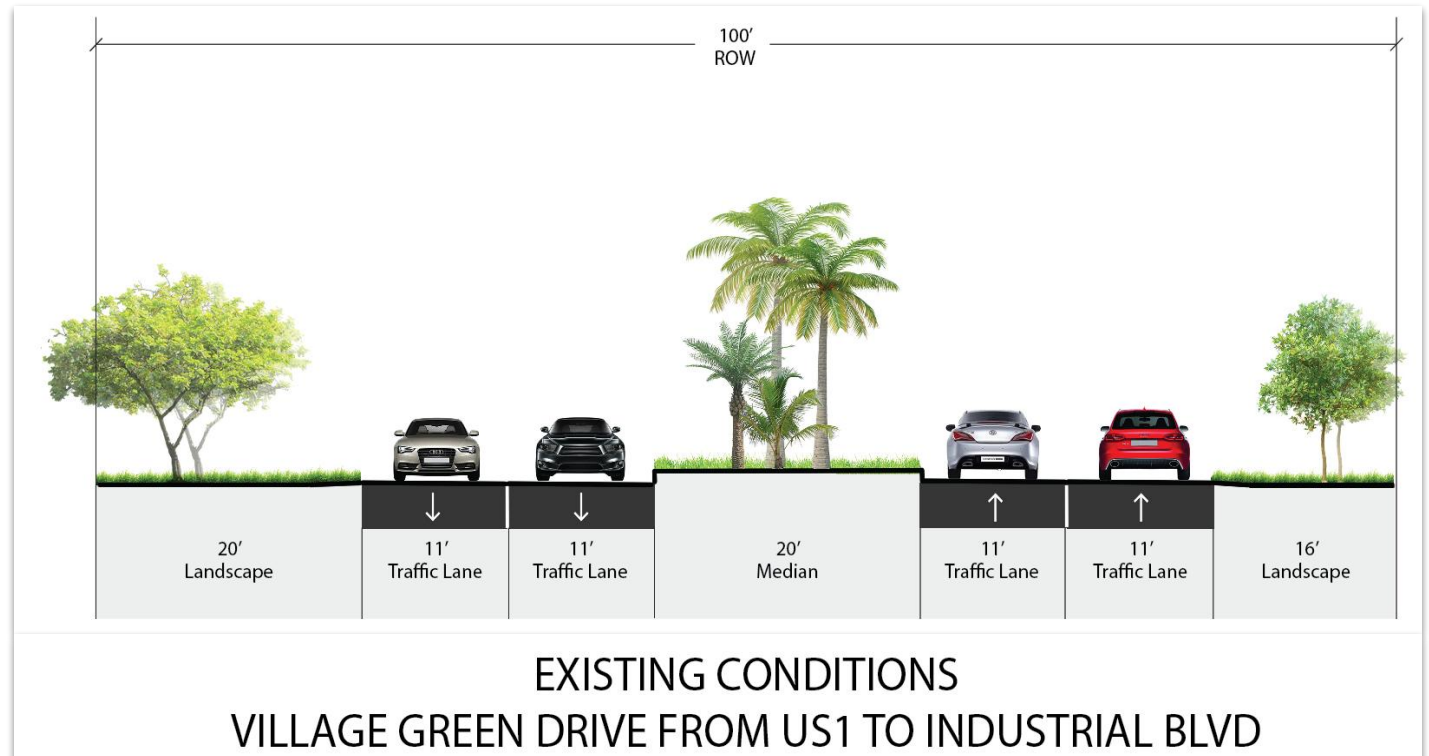
Sidewalks: 6-Foot, Concrete (Limited)

Bicycle: None

Transit: None

### Traffic Volumes

Average Daily Traffic - 11,796



# Trails Connection

## Industrial, Residential, and Institutional Uses.

### Street Character

Few trees in the median and fronting buildings. Buildings are setback with parking in front. Sidewalk missing on west side. Canal and Hog Pen Slough.

### Street Size & Lanes

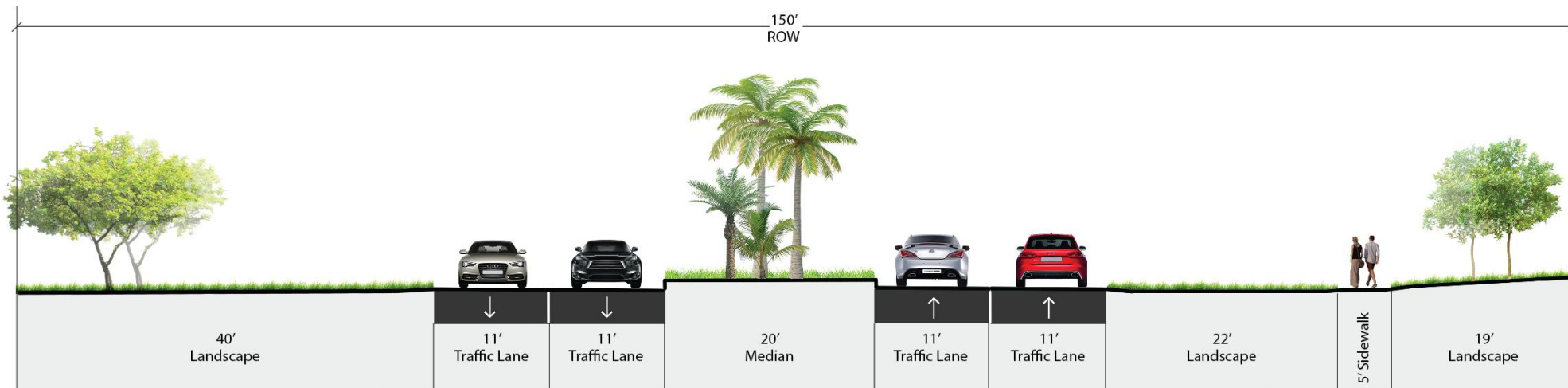
Right-of-way is approximately 150 feet. There are 4 travel lanes, 2 in each direction separated by a median.

### Multimodal Access

Sidewalk: 5 feet concrete, east side only  
Bicycle & Transit: None

### Traffic Volumes

Average Daily Traffic - 11,311



EXISTING CONDITIONS  
VILLAGE GREEN DRIVE FROM WALTON RD TO INDUSTRIAL BLVD

# Recreational Way

**City Center, Commercial, Institutional, Residential, Medical, and Recreational Uses**

## Street Character

Landscaping, Retention Ponds, Trails, Residential Entry's

## Street Size & Lanes

Right-of-way is approximately 150 feet. There are 2 travel lanes, one in each direction.

## Multimodal Access

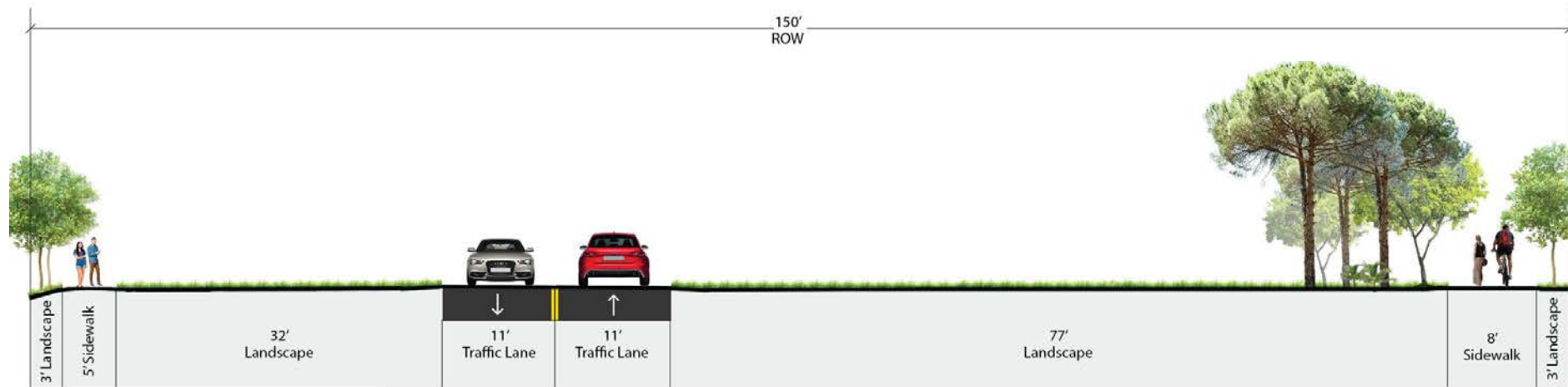
Sidewalks: 5-feet, concrete & 6-feet, asphalt

Bicycle: None

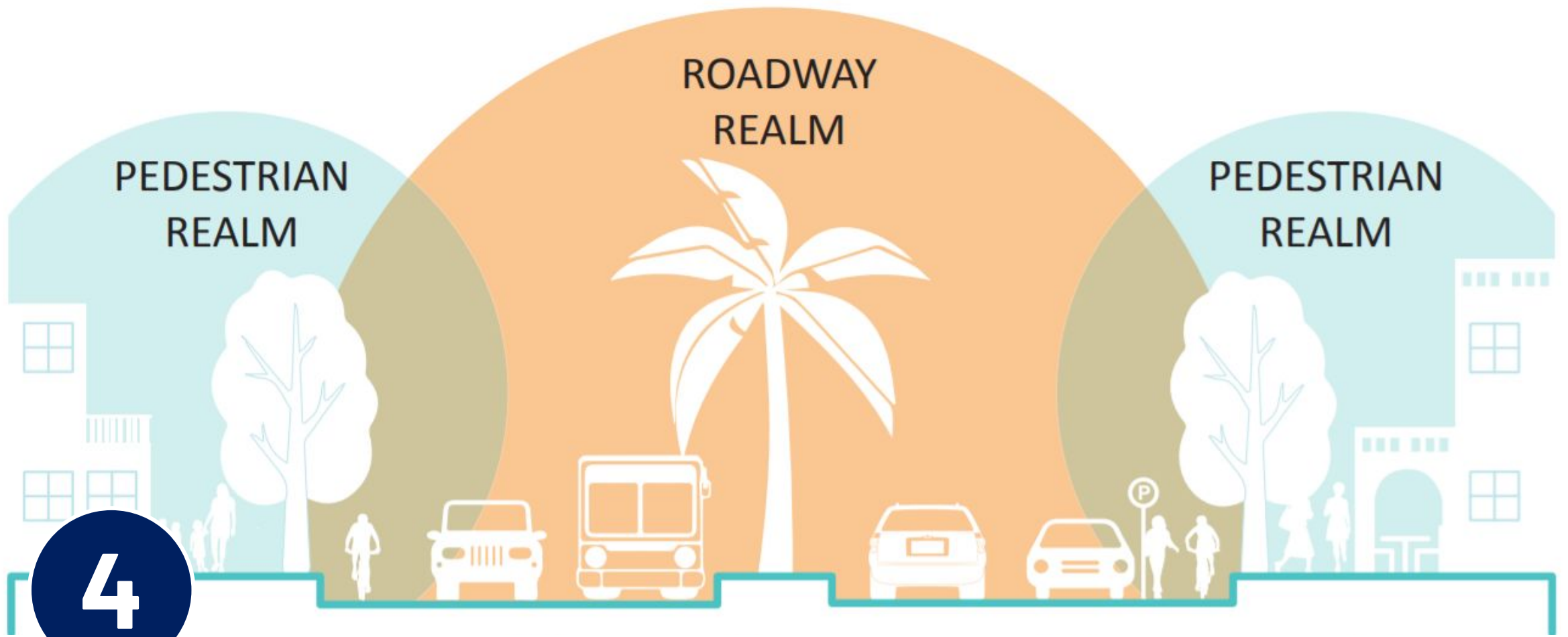
Transit: 2 Stops

## Traffic Volumes

Average Daily Traffic - 4,007



EXISTING CONDITIONS  
VILLAGE GREEN DRIVE FROM TIFFANY AVE TO WALTON RD



# Corridor Opportunities

# Pedestrian Improvements



**Raised Pedestrian Bridge / Path**



**Meandering Sidewalk (Suburban)**



**Enhanced Midblock Crosswalk**



**ADA Accessible Pathways**



**Shared Use Path / Multi Use Trail w/ Two Way Bicycle Pathway**



**Buffered Pedestrian Sidewalk**

CORRIDOR PEDESTRIAN IMPROVEMENT EXAMPLES



# Poll 4

## What Types of Pedestrian Improvements Would You Like to See? (select all that apply)

### Pedestrian Improvements



Raised Walking Path / Bridge



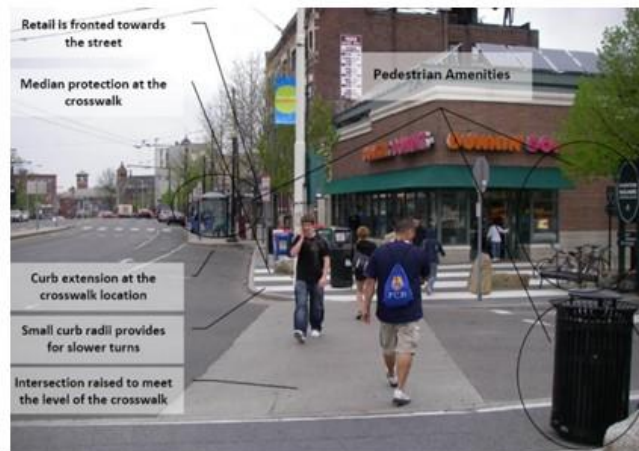
Wide Buffered Sidewalk



Enhanced Midblock Crossing



Wide Sidewalk w/ Shade Trees & Seating



Pedestrian Amenities: Signage, Trash Bin, Retail Front, etc.



Pedestrian Lighting

# Bicycle Improvements



**Protected Bicycle Lane (One-way)**



**Bicycle Lane**



**Shared Use Path / Multiuse Trail**



**Buffered Bicycle Lane**



**Separated Bicycle Lanes / Sidepath (Suburban)**



**Separated Bicycle Lanes (Urban)**

# Poll 5

## What Type of Bicycle Facility Would You Prefer? (select one)



**Protected Bicycle Lane  
(One-Way)**



**Bicycle Lane**



**Shared Use Path / Multiuse Trail**



**Buffered Bicycle Lane**

CORRIDOR BICYCLE IMPROVEMENT EXAMPLES



**Separated Bicycle Lanes / Side  
Path (Suburban)**



**Separated Bicycle Lanes  
(Urban)**

# Community Improvements



**Public Art w/ Textured Design**



**Architectural Feature w/ Green Roof**



**Wayfinding Signage**



**Public Art w/ Native Vegetation**



**Pedestrian Wayfinding Signage**



**Public Art**

CORRIDOR MONUMENT EXAMPLES

# Community Improvements



**Midblock Crossing w/ Median  
Pedestrian & Bicycle Pathways**



**Pedestrian Median w/ Bollards &  
Street Furniture**



**Monument/Entry Sign in Median**



**Pedestrian Refuge Island / Midblock Crossing**  
CORRIDOR MEDIAN EXAMPLES



**Pedestrian Refuge Island /  
Enhanced Crosswalk w/  
Bollards**



**Median Buffering Cyclists w/  
Landscape & Street Furniture**

# Poll 6

What type of community improvements would you like to see? (select all that apply)



Gateway / Monument Feature



Wayfinding Signage



Street Furniture: Seating, Trees, Bins, Bike Racks



Enhanced Vegetated Median



Linear Park: Klyde Warren Park (Dallas, TX)



Pubic Art

# Landscape Improvements



**Native Sabal Palms & Live Oaks**



**Combined Native & Tropical Vegetation Buffering Sidewalk**



**Landscaped Entry Feature**



**Tropical Landscaped Median**  
CORRIDOR LANDSCAPING EXAMPLES



**Formal Residential Landscaped Buffer**



**Combined Native & Tropical Landscaping**

# Landscaping Improvements



**Native Grasses & Vegetated Swale**



**Vegetated Swale w/ Rock**



**Water Detention Area**



**Hidden Swale / Detention Area**

CORRIDOR BIOSWALE PLANTING EXAMPLES



**Vegetated Stormwater Median**



**Vegetated Median w/ Mulch**



# Poll 7

What type of landscape improvements would you like to see? (select all that apply)



Bioswales



Median Enhancements



Shade Trees



Ornamental Landscaping



Wildflowers



Xeriscape

CORRIDOR LANDSCAPING EXAMPLES

# Traffic Calming



**Intersection Curb Extensions**



**Center Median Island / Chicane**



**Chicane**



**Roundabout w/ Public Art**



**Enhanced Crosswalk w/ Textured Pavement & Street Furniture**



**Raised Pedestrian Crossing**

CORRIDOR TRAFFIC CALMING IMPROVEMENT EXAMPLES

# Poll 8

What type of traffic calming techniques would you like to see? (select all that apply)



Curb Extensions w/ Textured Pavement



Median Island w/ Textured Crossing



Chicane



Roundabout



Raised Textured Ped Crossing / Speed Hump



Textured Crossing & Parallel Parking

# Transit Improvements



**Shelter, Seating, Signage, Trash & Recycling Bins, Bike Rack, Signage**



**Public Art**



**Charging Station**



**Mobility Share - i.e. Bikeshare Station**



**Real-Time Signage**

# Poll 9

What type of Transit Amenities would you prefer? (select all that apply)



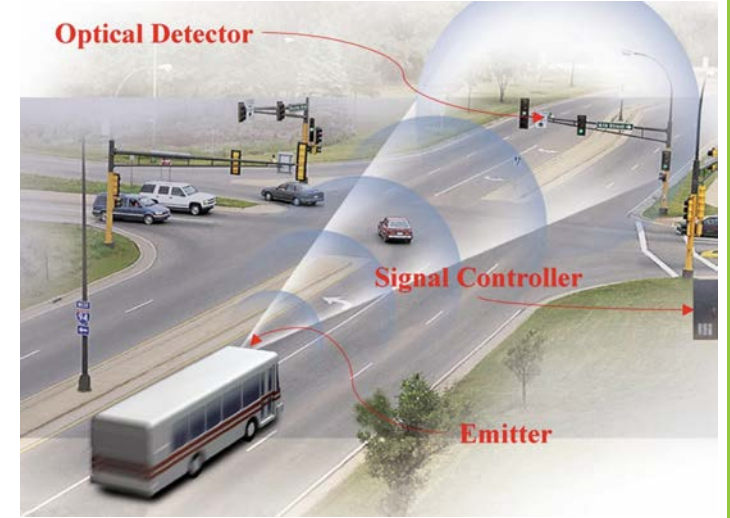
# Intersection Improvements



Signal Timing for Vehicles



Pedestrian & Bicycle Signal



Bus Signal Priority



Audible Push Buttons



Pedestrian & Bicycle Crossing

# Poll 10

What type of intersection improvements would you like to see? (select all that apply)



Signal Timing for Vehicles



Pedestrian & Bicycle Signal



Bus Signal Priority



Audible Push Buttons



Pedestrian & Bicycle Crossing

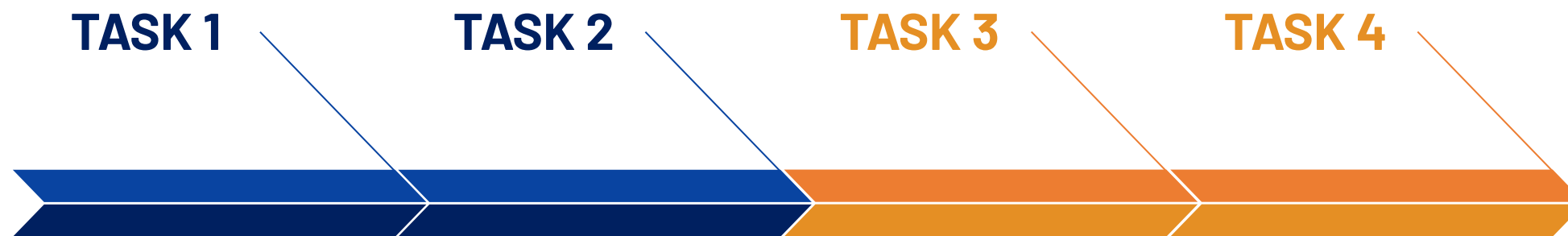


5

# Next Steps



# Conceptual Design



## Community Input

Community Outreach, Information, and Input

## Data Analysis

Collection & Analysis of Traffic, Bicycle, Pedestrian, Transit, and Landscape Data

## Design Concepts

Develop 3 Alternative Design Concepts to Present to the Public & Stakeholders

## Final Master Plan

15% Design Plan Presented to City Council





**Questions &  
Comments**

**Thank you!**

**City Contact:**

Jennifer Davis  
CRA Project Manager  
[JDavis@cityofpsl.com](mailto:JDavis@cityofpsl.com)  
(772) 344-4342



**Project Contact:**

Christina Fermin  
Project Manager  
[CFermin@marlinengineering.com](mailto:CFermin@marlinengineering.com)  
(954) 870-5064

**MARLIN**



# Public Meeting #1

OCTOBER 8, 2020

PREPARED BY

**MARLIN**

