

Welcome!



Village Green Drive Corridor Revitalization
Public Information Meeting #2

February 18, 2021



AGENDA



Welcome and Introductions

Jennifer Davis, CRA Project Manager



Current Planning Initiative

MARLIN Engineering Team



Question & Answer Session

City's Team Members

Heath Stocton, P.E.

Assistant Public Works Director

Jennifer Davis

CRA Project Manager

Avi Monina

ZOOM Extraordinaire

Building, Business Navigator, Neighborhood
Services, Parks & Recreation, Planning & Zoning,
Police, Public Works, Utilities



Microphones will be muted



Utilize the CHAT feature to ask questions; Q&A will be at the end of the presentation



There will be several polling questions



A recording of the meeting and copy of the presentation will be made available at www.cityofpsl.com/VillageGreen



Strategic Plan

FY 2020/21

Goal 1: Safe, Clean & Beautiful

One of the City's key initiatives is to beautify two gateways into the City: US Highway 1/**Village Green Drive Beautification** and Design of St. James Boulevard Corridor Improvements.



- **US Highway 1 Beautification**
FDOT construction complete in Summer 2022
- **St. James Boulevard Corridor Improvements**
Plans are scheduled to be complete June 2021
- **Reimagine City Center**
Goal 4: Diverse Economy & Employment Opportunities

Polling Test

Please use these two Polling Tests to familiarize yourself with utilizing the ZOOM polling feature. We will be sharing results after each poll and will provide a summary of results on the website after the meeting.



Polling Test

Are you a full time or part time resident of Florida?

1. Full Time Resident
2. Part Time Resident
3. Not a resident...just visiting



Polling Test



If you live within the city limits of Port St. Lucie, do you live east or west of the St. Lucie River?

1. East of the river
2. West of the river
3. Neither...I do not live within the city limits of Port St. Lucie



AGENDA



Welcome and Introductions

Jennifer Davis, CRA Project Manager

The logo for MARLIN, consisting of the word "MARLIN" in a bold, blue, sans-serif font. The logo is positioned on a yellow circular background that is partially overlapping the top-left corner of the slide's content area.

MARLIN

Current Planning Initiative

MARLIN Engineering Team

A dark blue circular icon containing the text "Q&A" in white, bold, sans-serif font. The icon is positioned on the left side of the slide's content area.

Q&A

Question & Answer Session



Public Meeting #2

February 18, 2021

PREPARED BY

MARLIN



Welcome & Team Introductions



MARLIN



Cotleur &
Hearing

Firefly
public relations & marketing

Agenda

- 1 Project Overview
- 2 Issues & Opportunities
- 3 Existing Conditions
- 4 Concepts
- 5 Next Steps
- 6 Questions/Comments



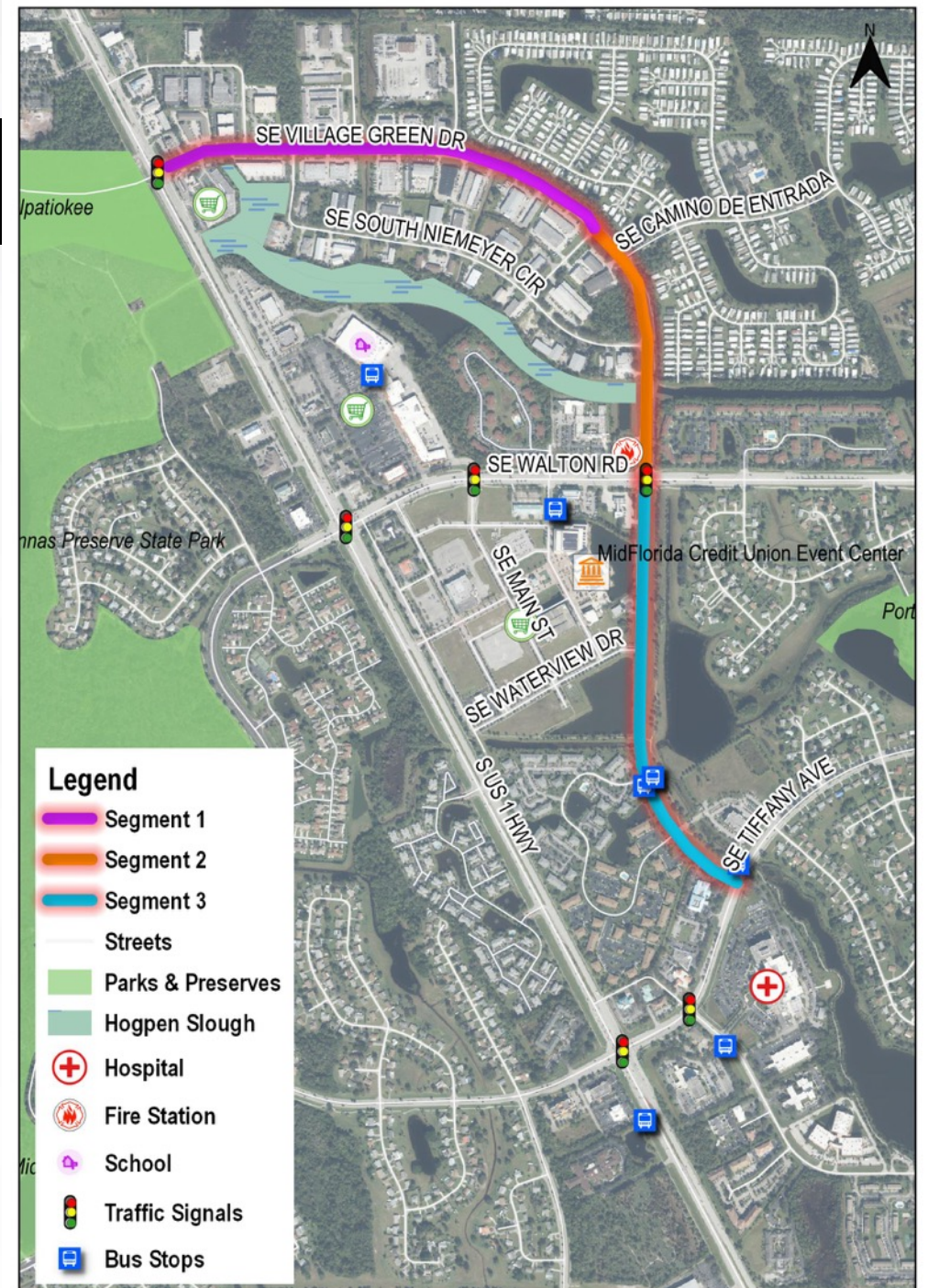


1

Project Overview

Village Green Drive

- Connects to Crosstown Parkway from US 1 to SE Tiffany Avenue
- **US 1 to Industrial Boulevard**
 - Industrial Uses
- **Industrial Boulevard to Walton Road**
 - Fire Station 12, Industrial, Residential
- **Walton Road to SE Tiffany Avenue**
 - Medical, Mixed Use, Residential, Government, Recreational



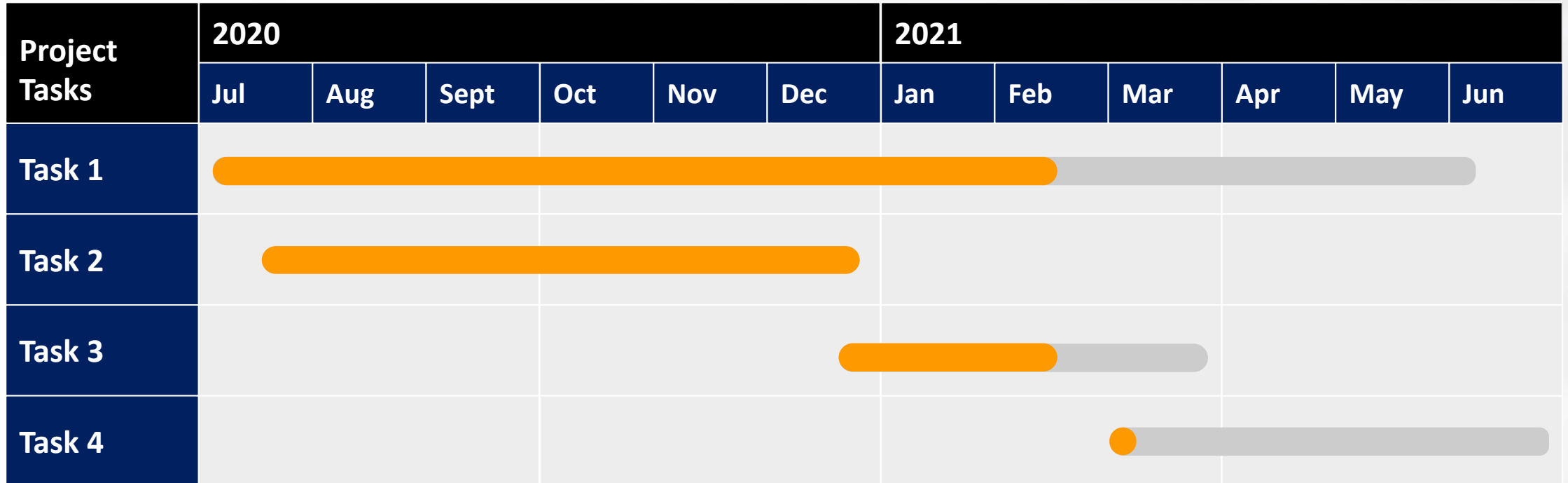
Project Tasks

Poll #3

TASK 1: Meetings, Coordination, & Public Involvement	TASK 2: Data Collection & Analysis	TASK 3: Design Concepts	TASK 4: Final Master Plan
Business Canvassing Day - September 10, 2020	Review of Plans, Documents, and Codes	Summary of Issues & Opportunities	Preferred Design Concept at 15% Plans
1st Public Meeting – October 8, 2020	Field Inventory & Review	Concepts	
City Council Meeting – November 16, 2020	Traffic, Pedestrian, & Bicycle Data Collection	Cost Estimates	
Stakeholder Meetings – December 2020	Walking Audit – October 1, 2020		
2nd Public Meeting – February 18, 2021 TODAY	Survey		
Citizen’s Summit – March 23, 2021	Analysis		



Project Schedule



TODAY ▲



2

Issues & Opportunities

Strengths

- MidFlorida Event Center
- St. Lucie Medical Center
- Businesses
- Community
- Parks, Recreation & Open Space
- Connectivity
- Native Trees & Landscaping
- Multi-Modal Options



Weaknesses

- Pedestrian & Bicycle Network
- Lack of Amenities
- Lack of Drainage Infrastructure
- Lack of Recognition
- Building Facades/Setbacks
- Development Pattern
- Transit



Opportunities

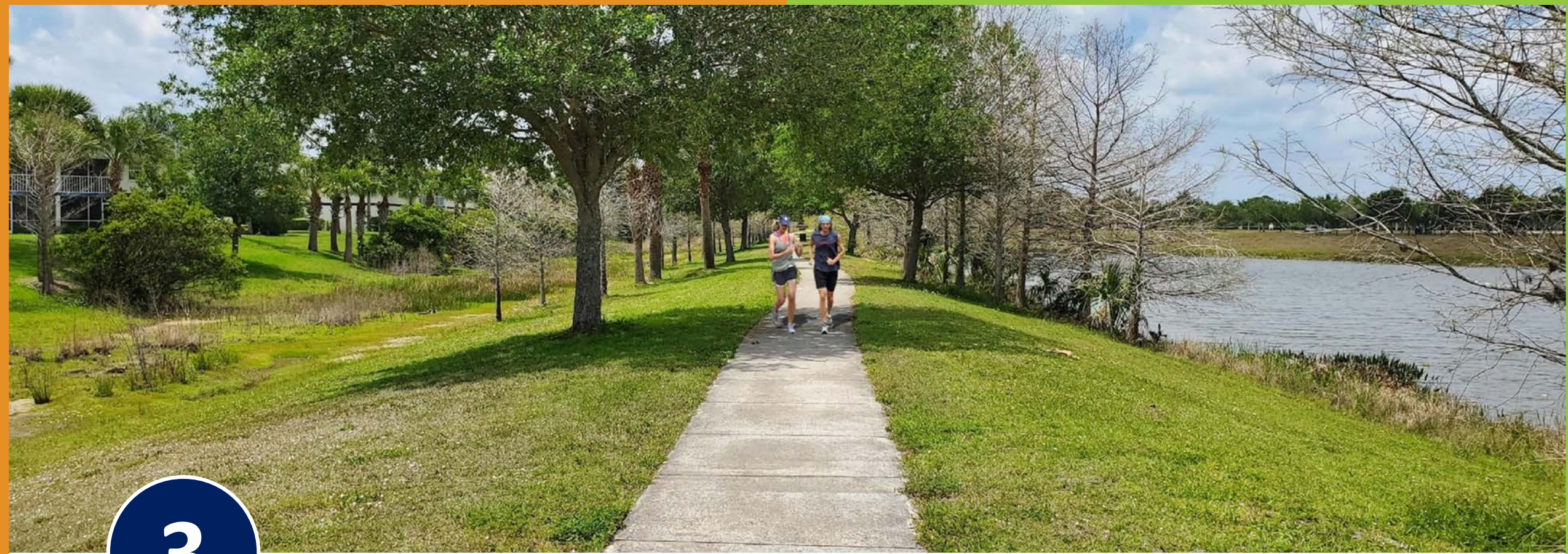
- Available Right-of-Way
- Landscape Enhancements
- Trails & Open Space
- Event Center / Medical Center
- Hogpen Slough Trail
- Green Infrastructure (Bioswales, Rain Gardens, Street Trees)
- Placemaking – Branding, Public Art, Aesthetics, Amenities, Programming



Threats

- Speeding
- Bicycle/Pedestrian Facilities
 - Intersection Crossings
- ADA Accessibility
- Flooding
- Increased Traffic & Congestion
- Funding
- Opposition
- Lighting





3

Existing Conditions

Traffic Conditions

Segment	Lanes*	Average Daily Traffic (ADT)	Maximum ADT	Average Speed Posted Speed = 30 mph
W of South Niemeyer Cir	4 LD	12,709	13,700	35 mph
W of Industrial Blvd	4 LD	10,883	13,100	35 mph
S of Niemeyer Cir	4 LD	11,311	11,600	39 mph
S of Walton Rd	2 L	3,877	6,900	42 mph
N of SE Tiffany Ave	2 L	4,138	6,900	35 mph

*L - Lane, LD - Lane Divided

Village Green Drive

Three (3) Distinct Segments:

Segment 1 (Northern Gateway):

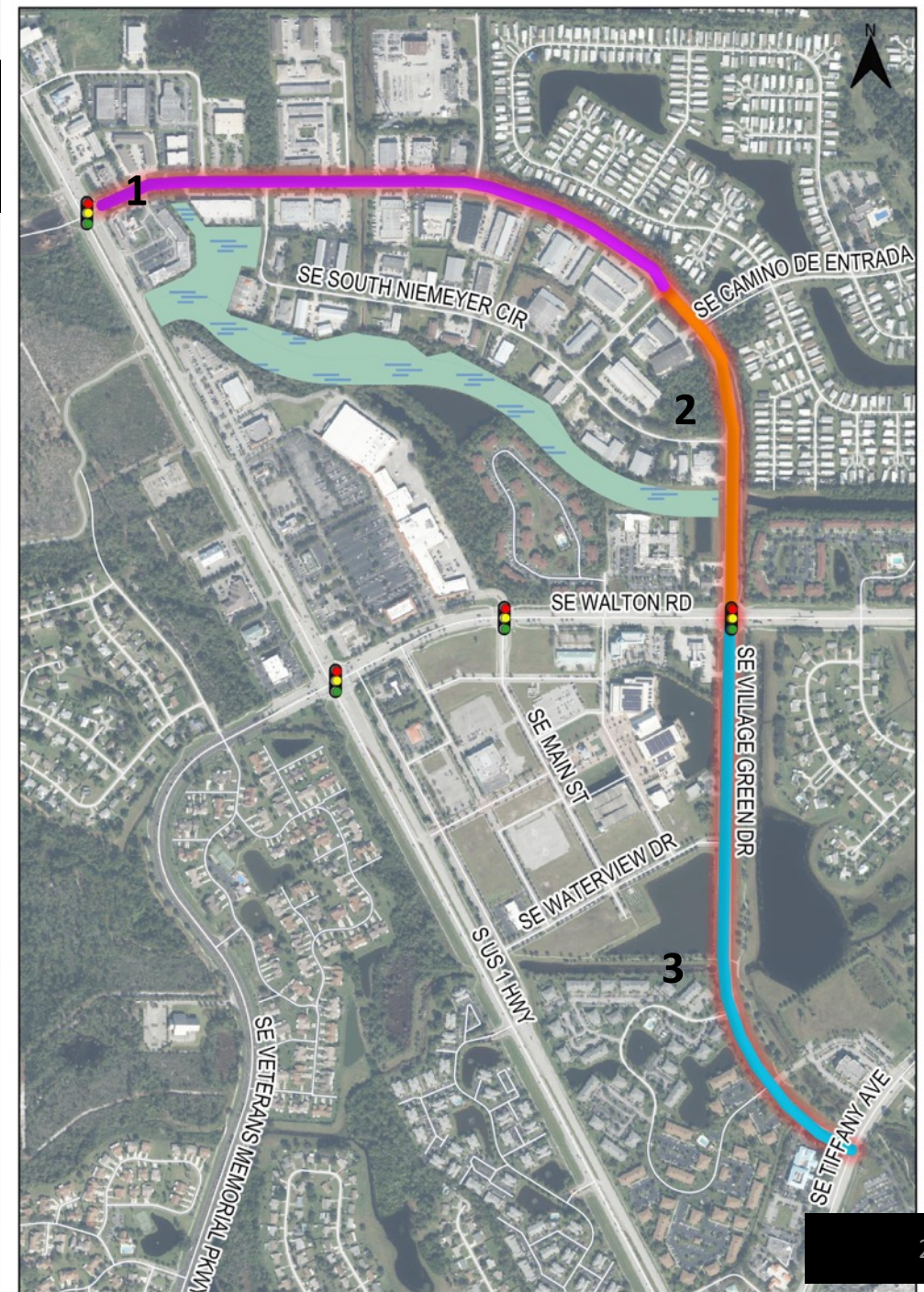
Between US 1 and Industrial Boulevard

Segment 2 (Trail Connection):

Between Industrial Boulevard and Walton Road

Segment 3 (Recreational Way):

Between Walton Road and Tiffany Avenue



Segment 1 – Northern Gateway

Industrial, Commercial, and Residential Land Uses

Street Character

Few trees in the median and fronting buildings. Buildings are setback with parking in front.

Street Size & Lanes

Right-of-way is approximately 100 feet. There are 4 travel lanes, 2 in each direction separated by a median.

Multimodal Access

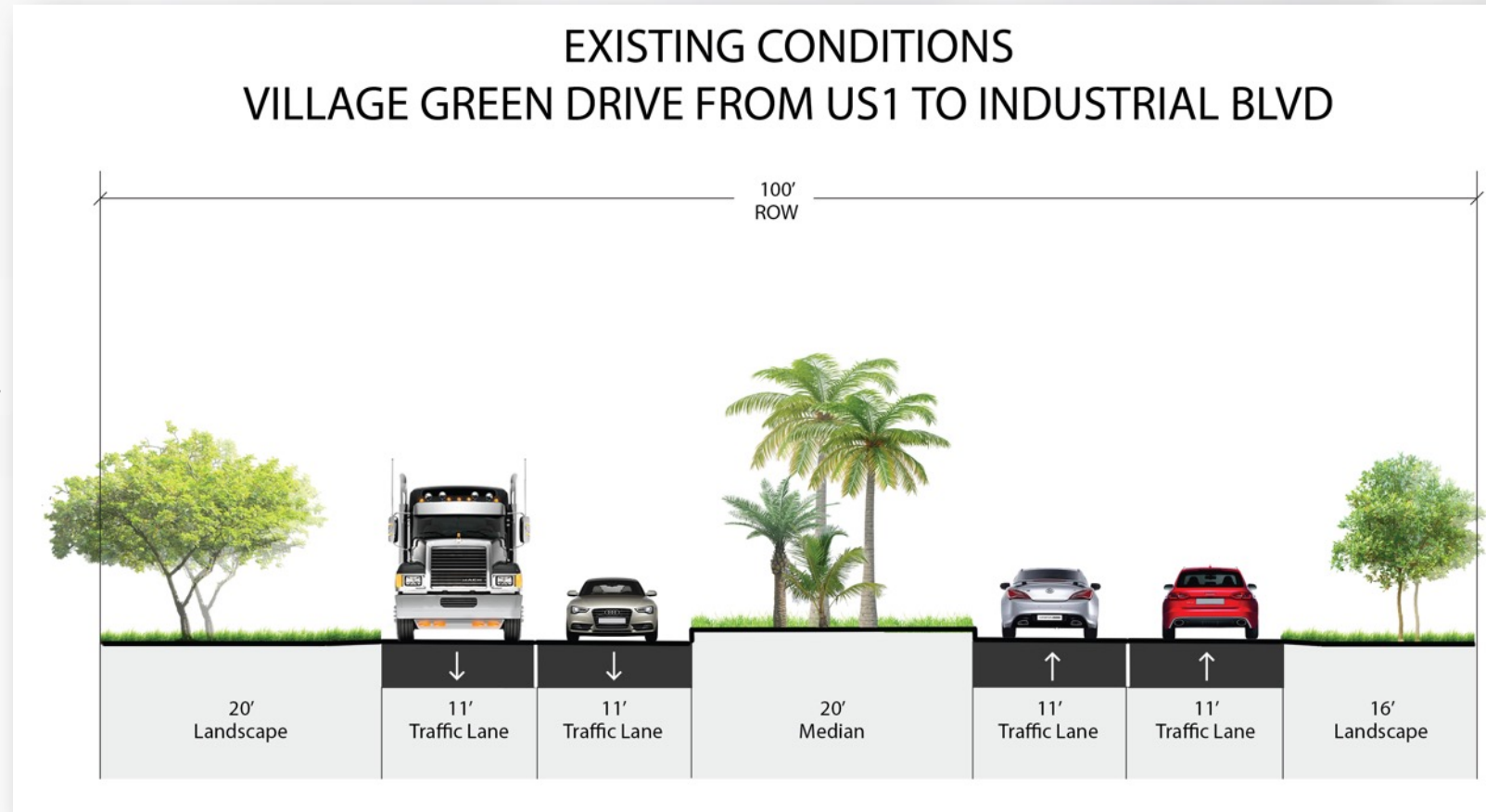
Sidewalks: 6-Feet, Concrete (Limited)

Bicycle: None

Transit: None

Traffic Volumes

Average Daily Traffic - 11,796



Segment 2 – Trail Connection

Industrial, Residential, and Institutional Uses

Street Character

Few trees in the median and fronting buildings. Buildings are setback with parking in front. Sidewalk missing on west side. Canal and Hog Pen Slough.

Traffic Volumes

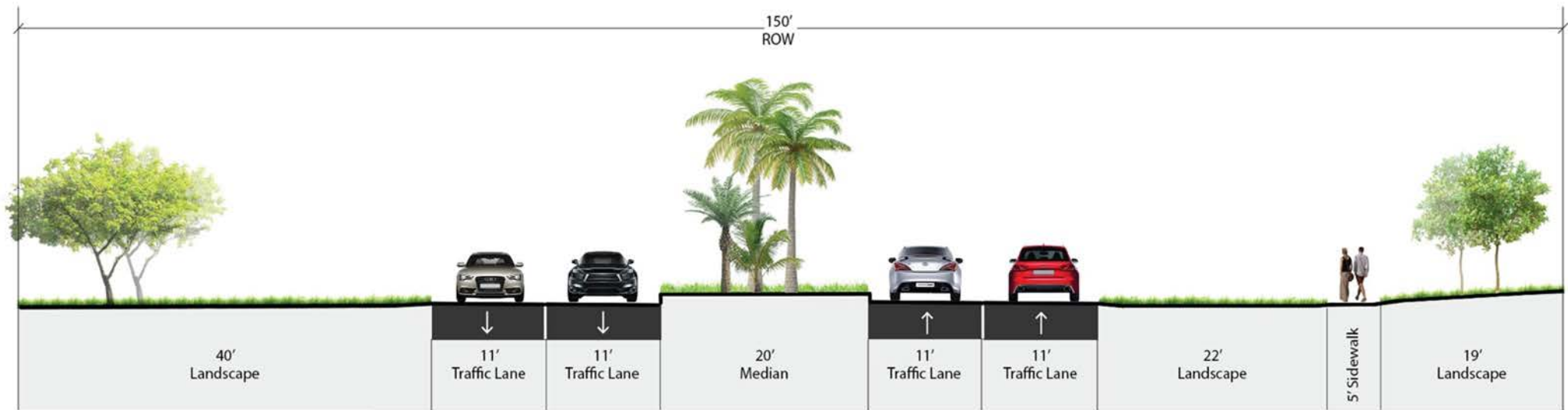
Average Daily Traffic - 11,311

Street Size & Lanes

Right-of-way is approximately 150 feet. There are 4 travel lanes, 2 in each direction separated by a median.

Multimodal Access

Sidewalk: 5 feet concrete, east side only
Bicycle & Transit: None



EXISTING CONDITIONS

VILLAGE GREEN DRIVE FROM WALTON RD TO INDUSTRIAL BLVD

Segment 3 – Recreational Way

City Center, Commercial, Institutional, Residential, Medical, and Recreational Uses

Street Character

Landscaping, Retention Ponds, Trails, Residential Entries

Multimodal Access

Sidewalks: 5-feet, concrete & 6-feet, asphalt
Bicycle: None
Transit: 2 Stops

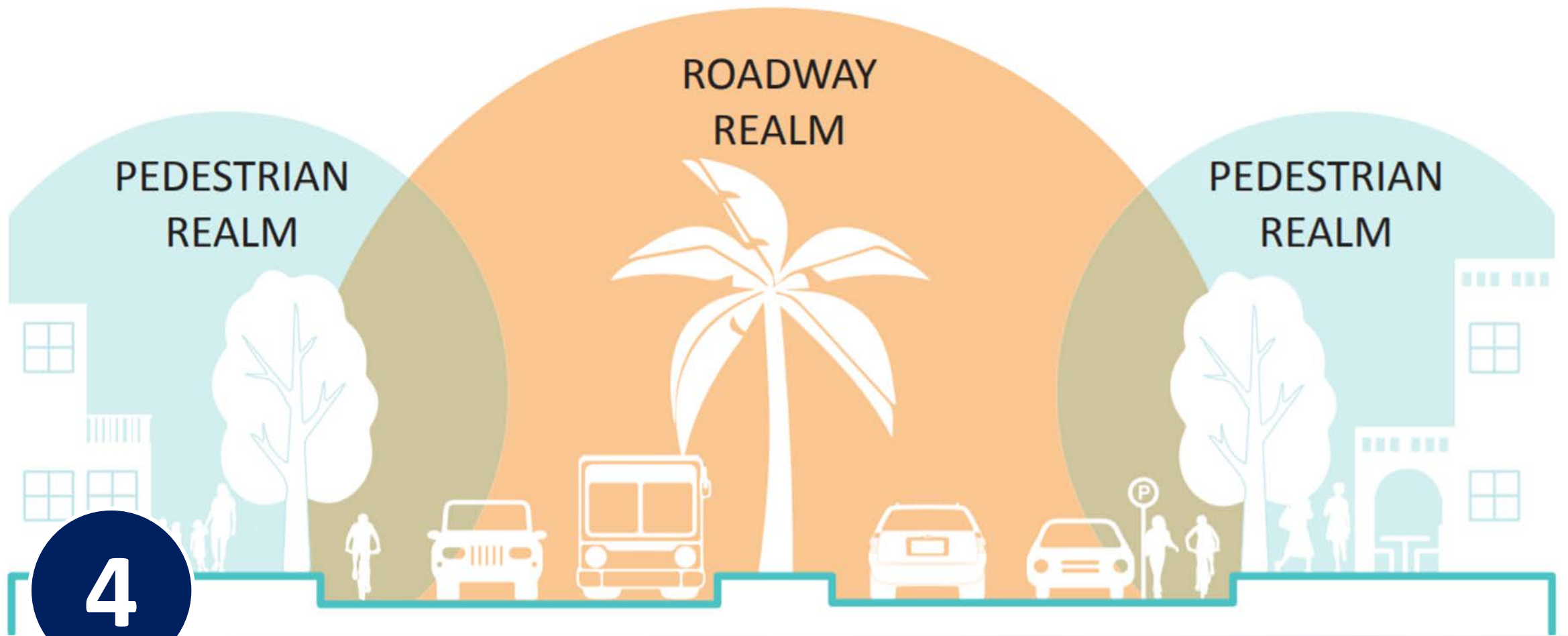
Street Size & Lanes

Right-of-way is approximately 150 feet. There are 2 travel lanes, one in each direction.

Traffic Volumes

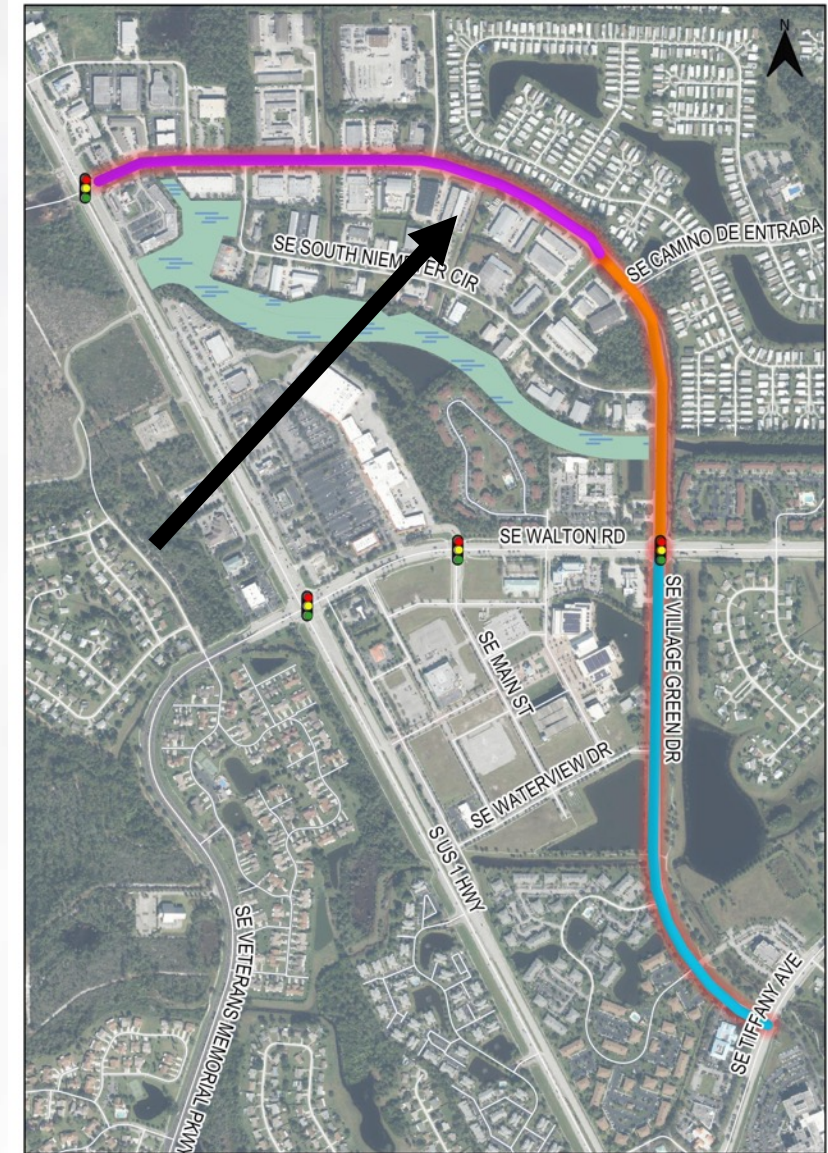
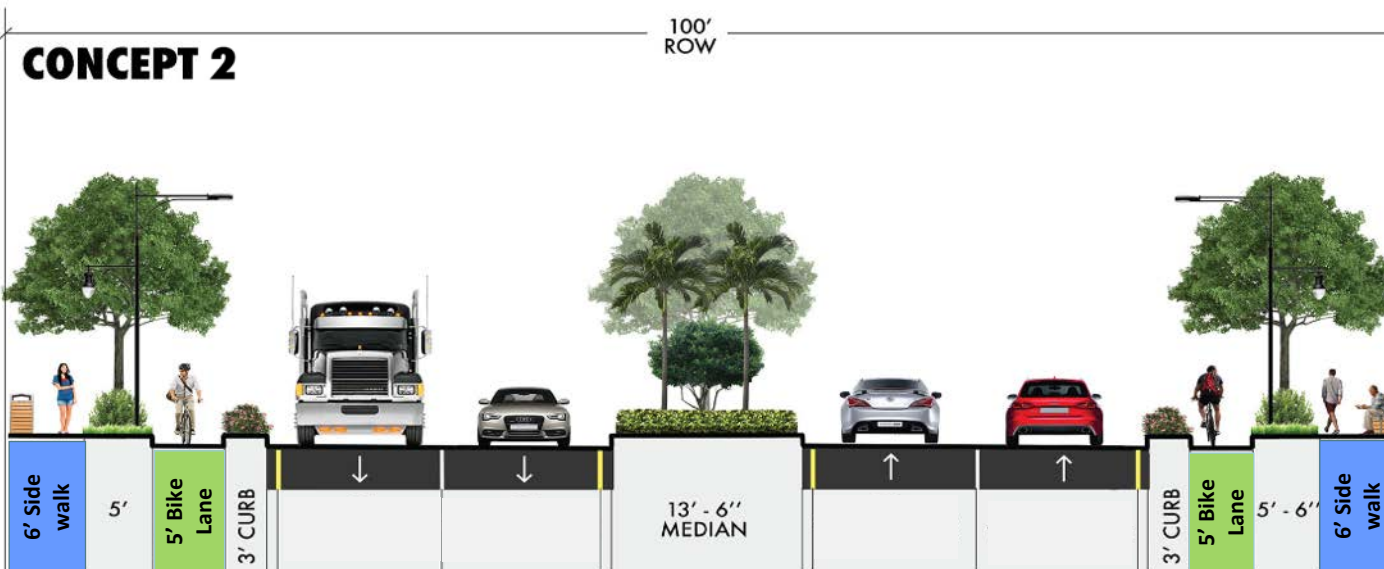
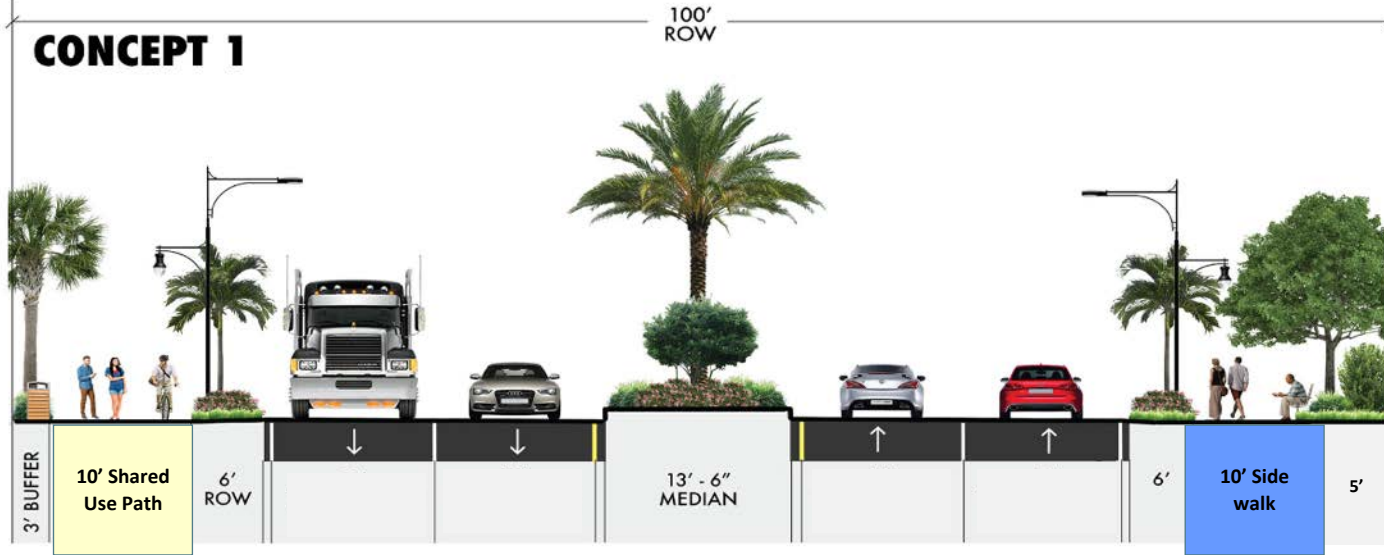
Average Daily Traffic - 4,007



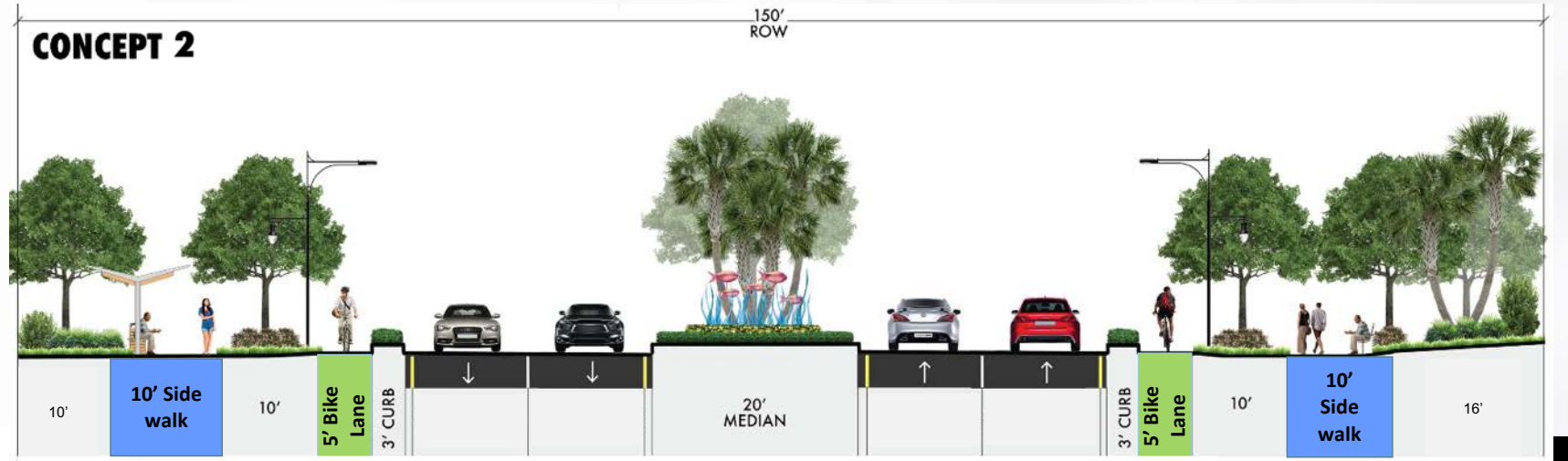
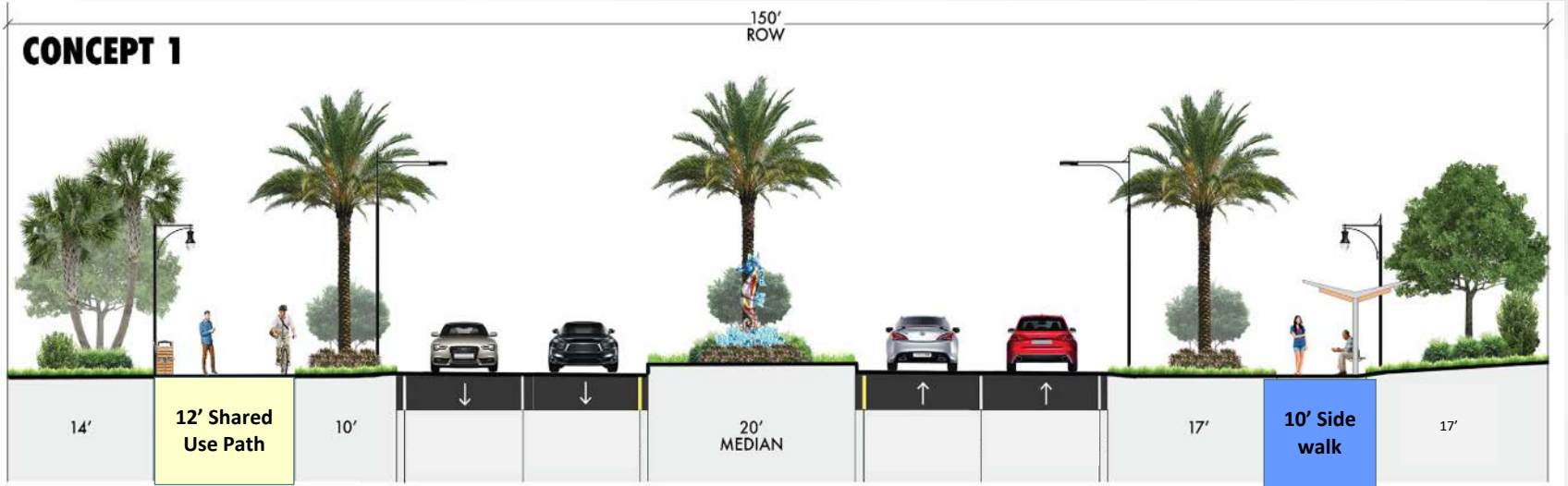
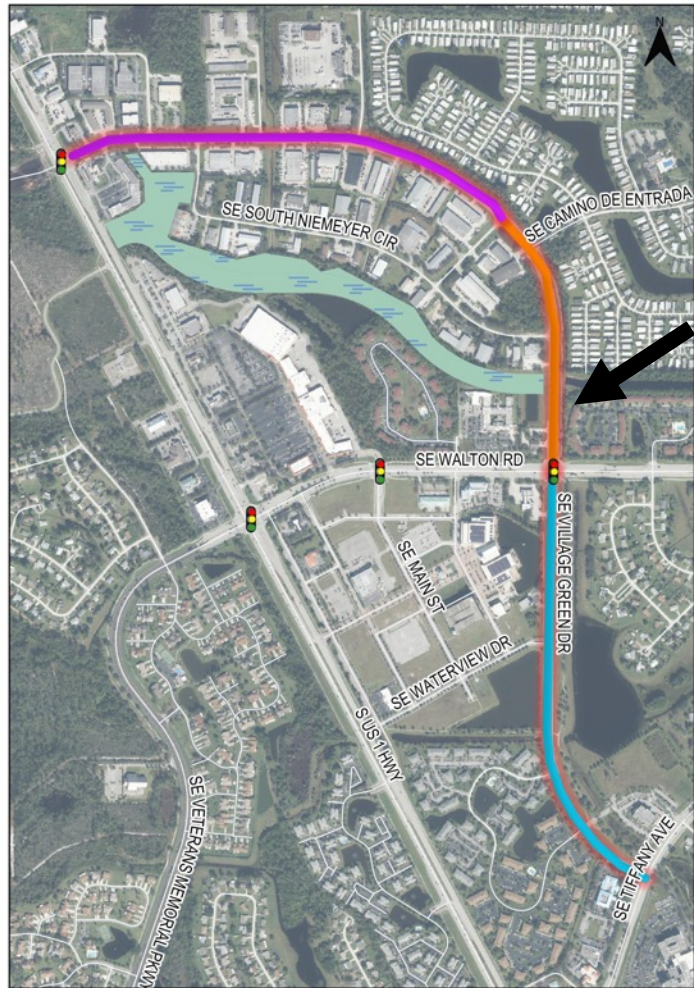


Conceptual Design Alternatives

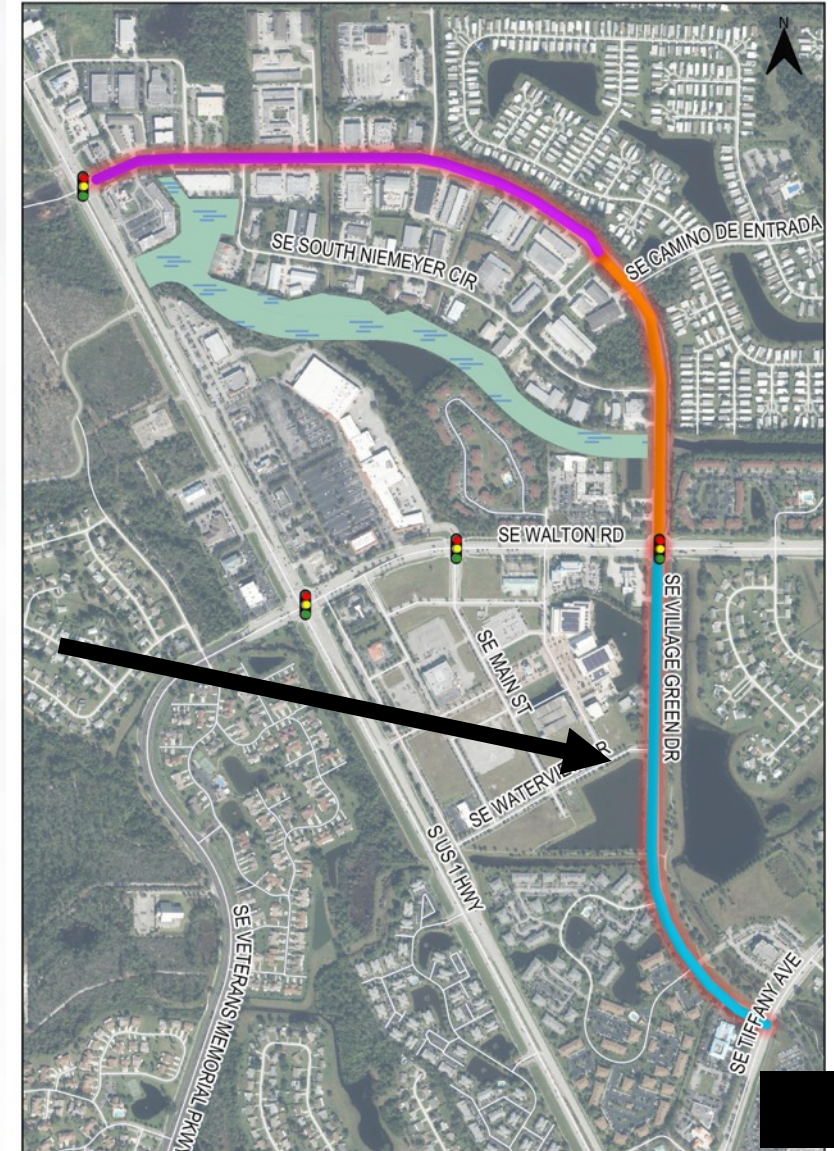
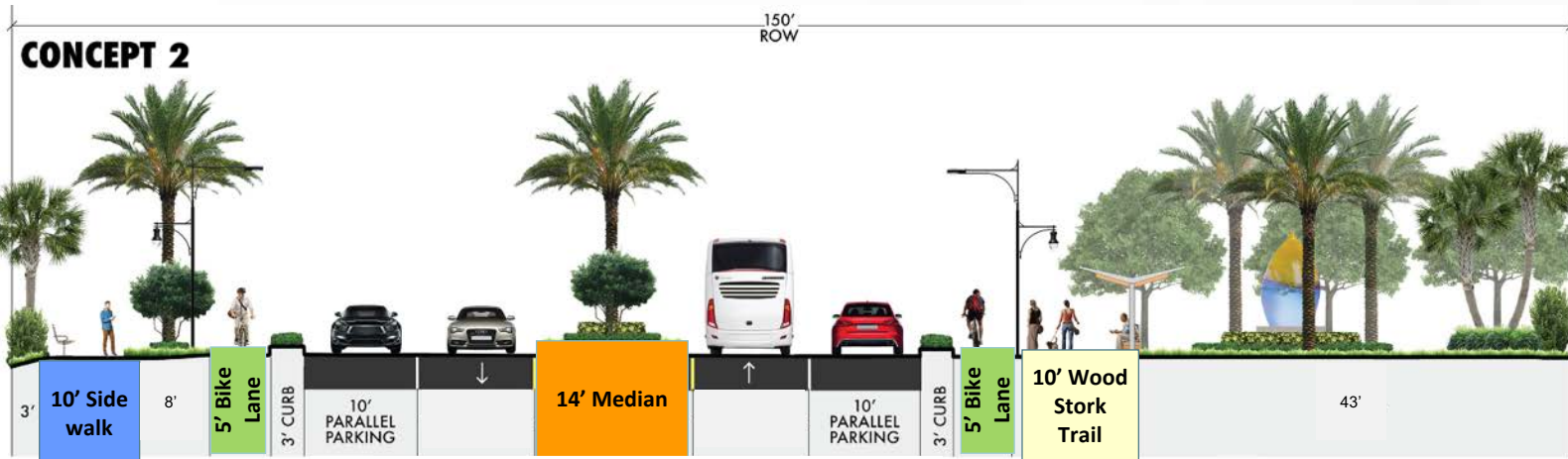
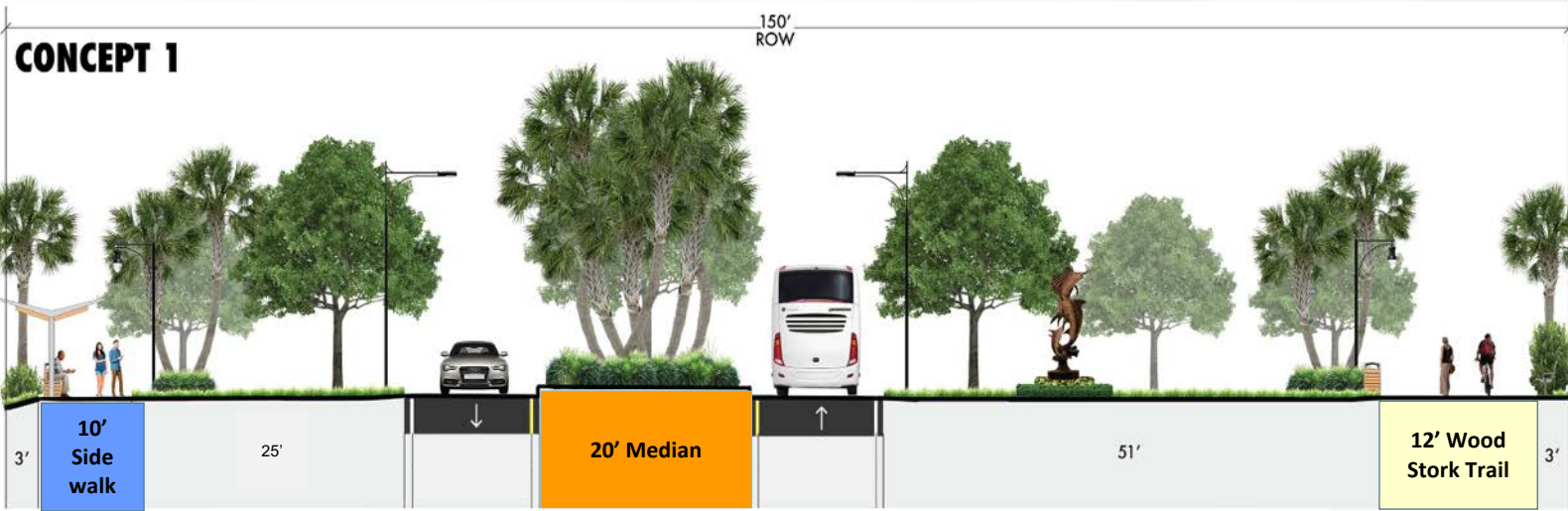
Concepts for Segment 1 – US 1 to Industrial Blvd.



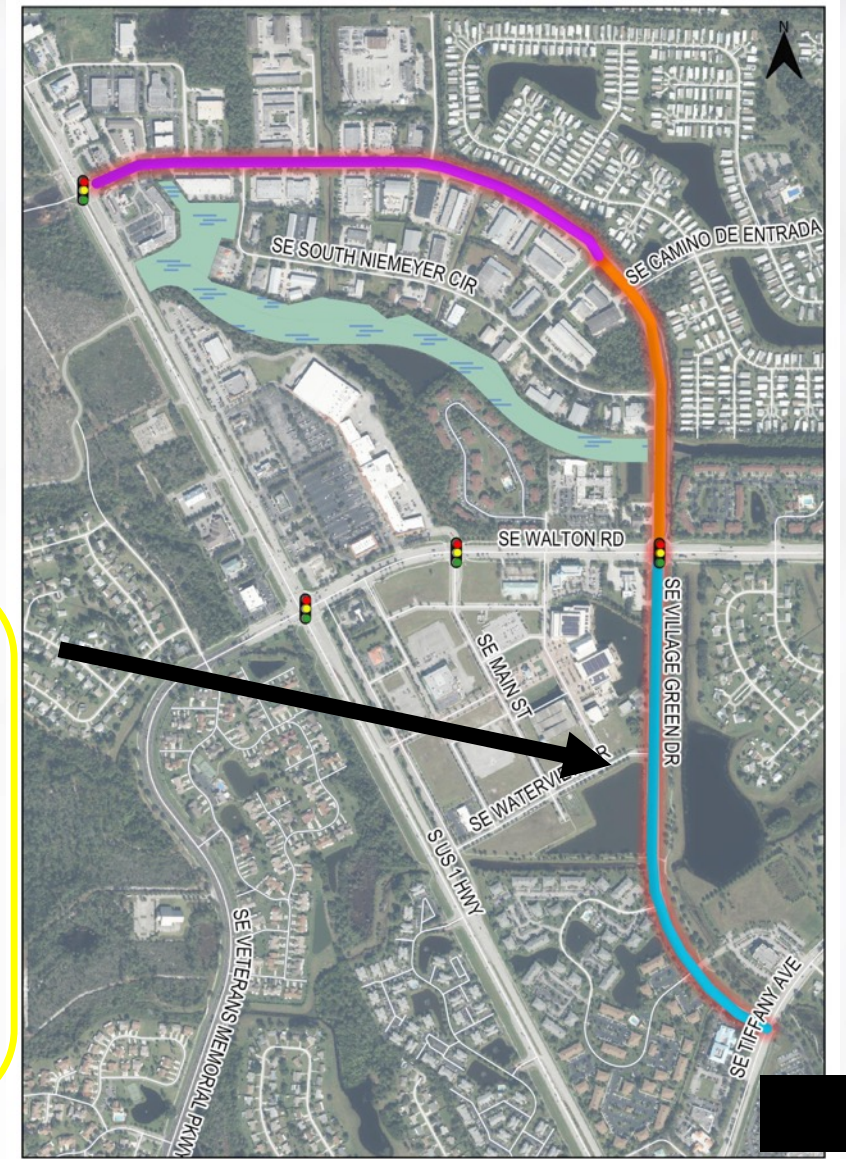
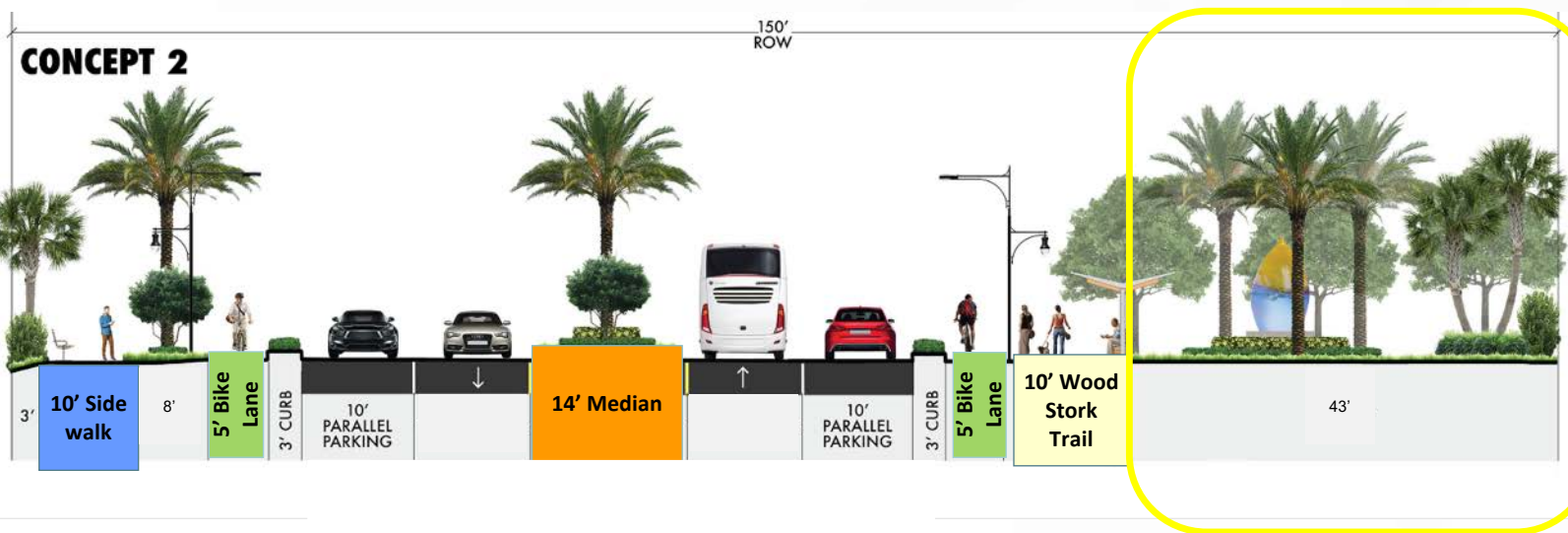
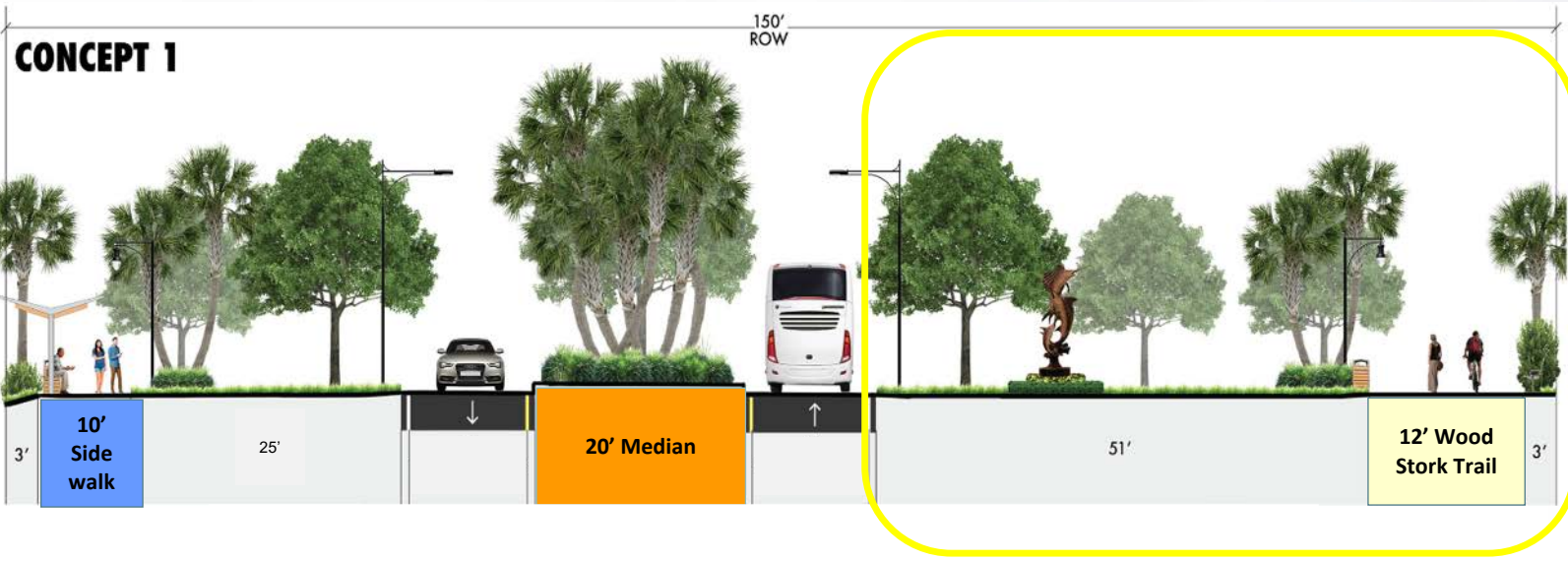
Concepts for Segment 2 – Industrial Blvd. to Walton Rd.



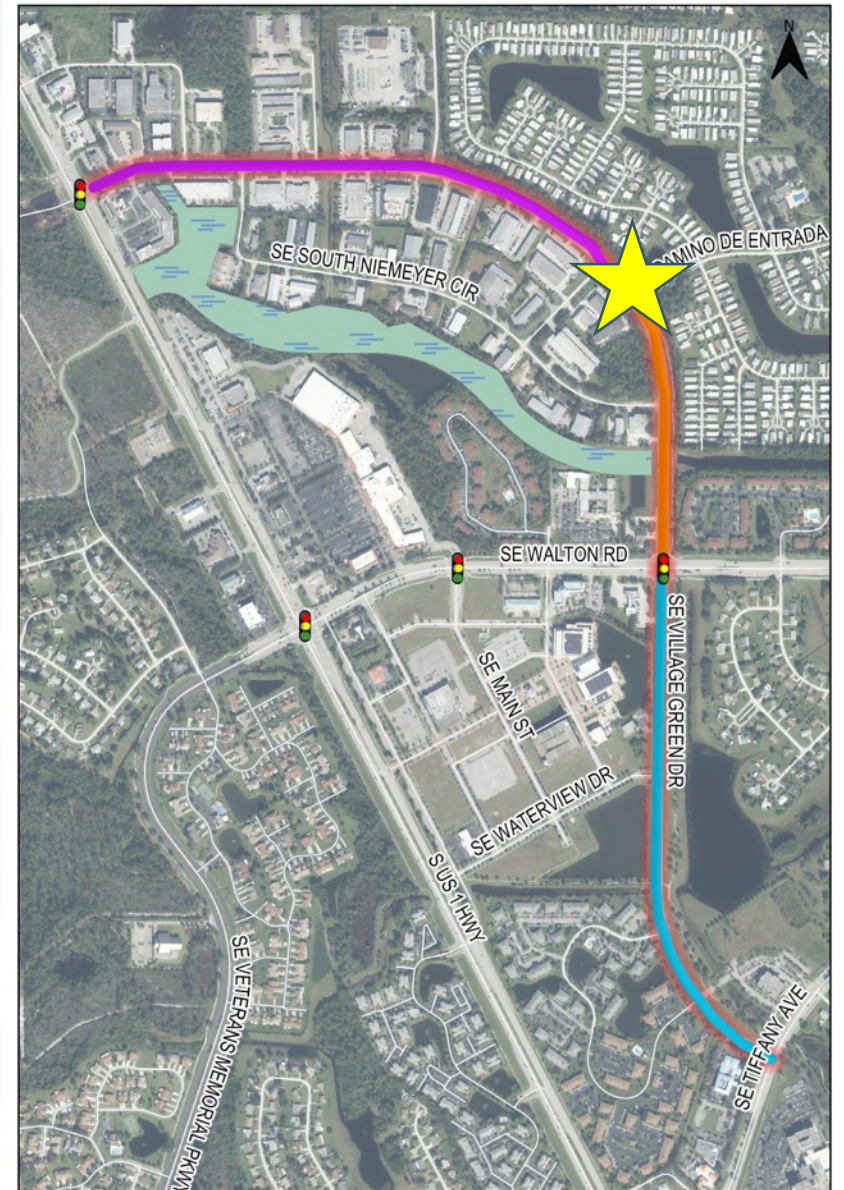
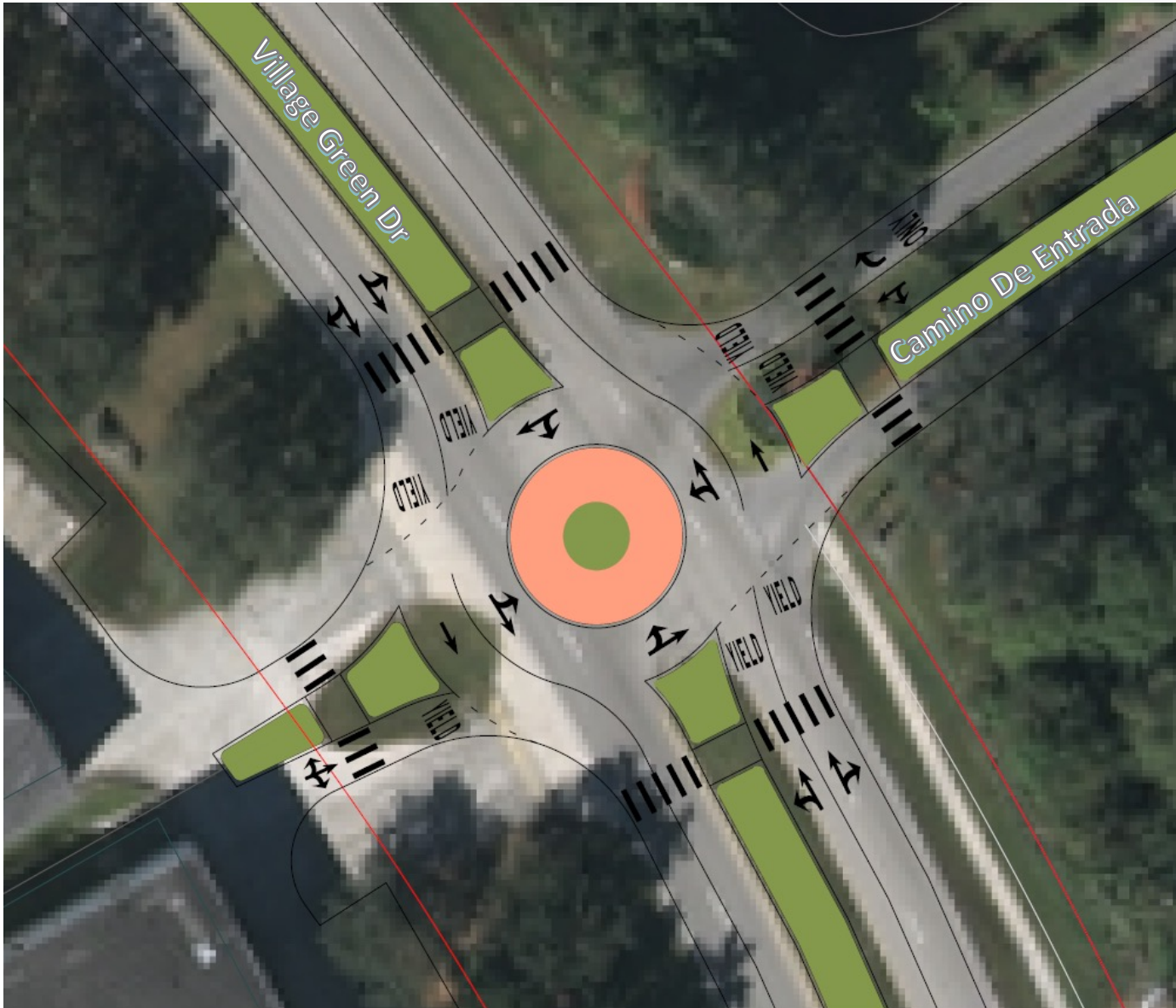
Concepts for Segment 3 – Walton Rd. to Tiffany Ave.



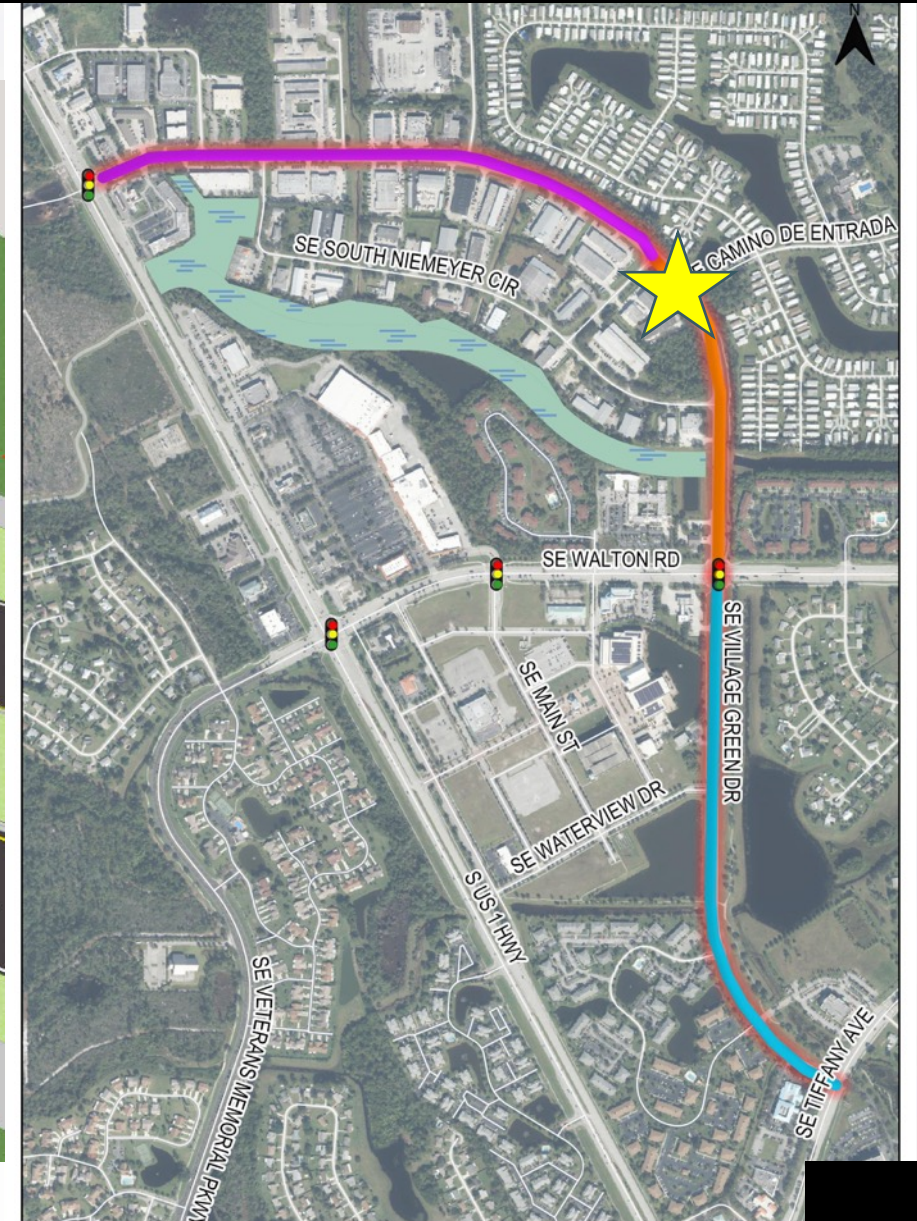
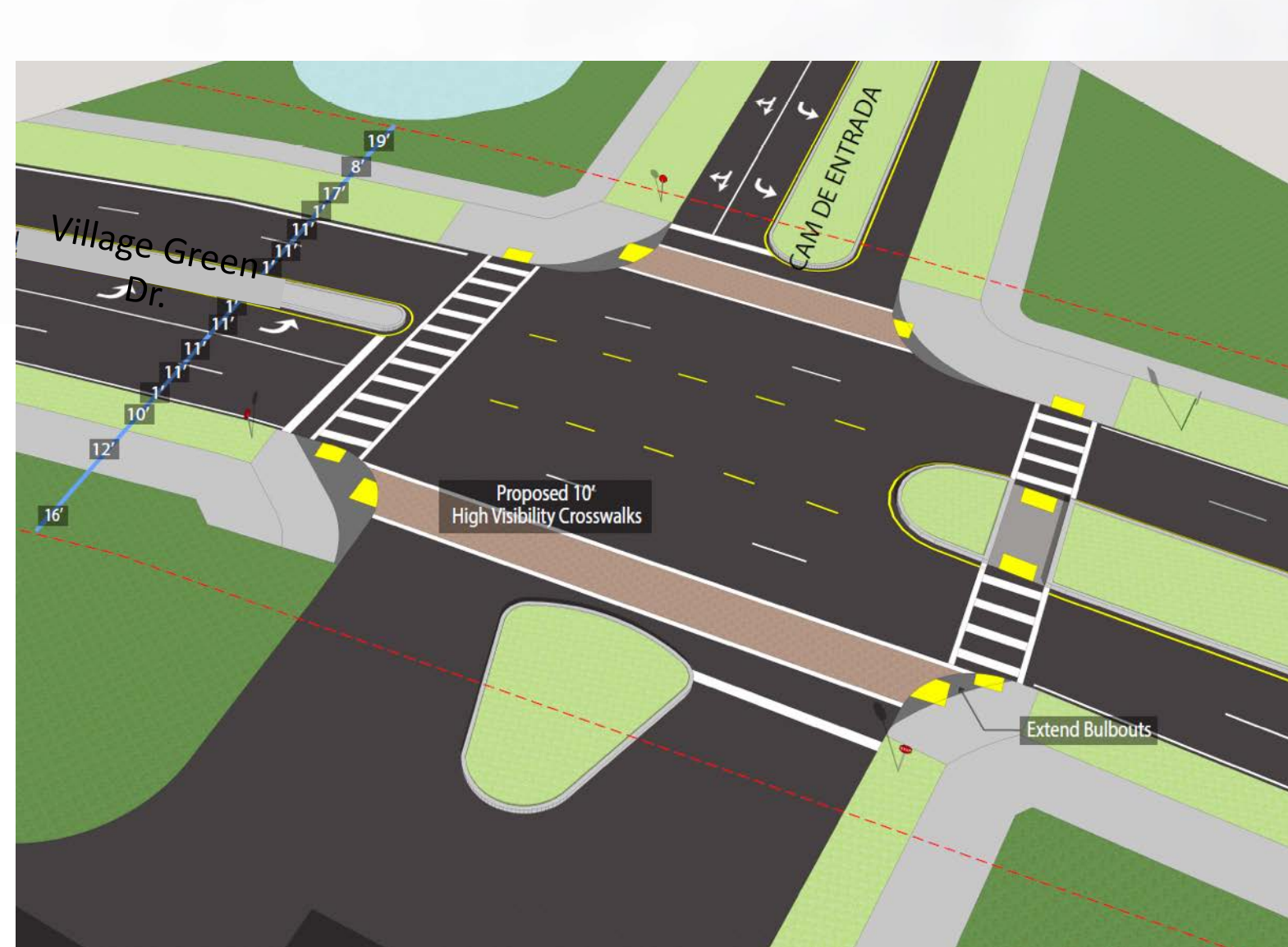
Concepts for Segment 3 – Walton Rd. to Tiffany Ave.



Roundabout Option at Village Green Drive and Camino De Entrada

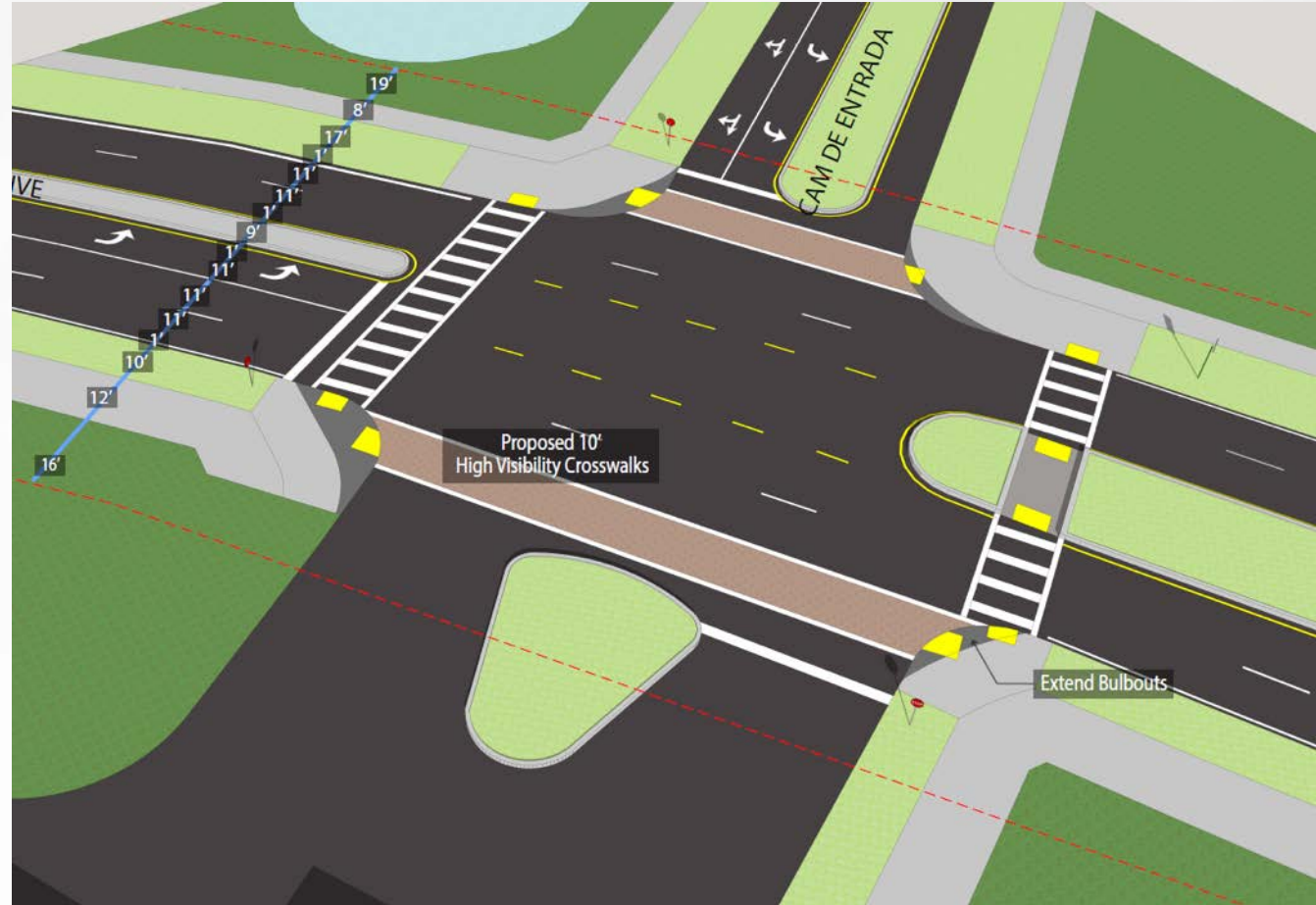
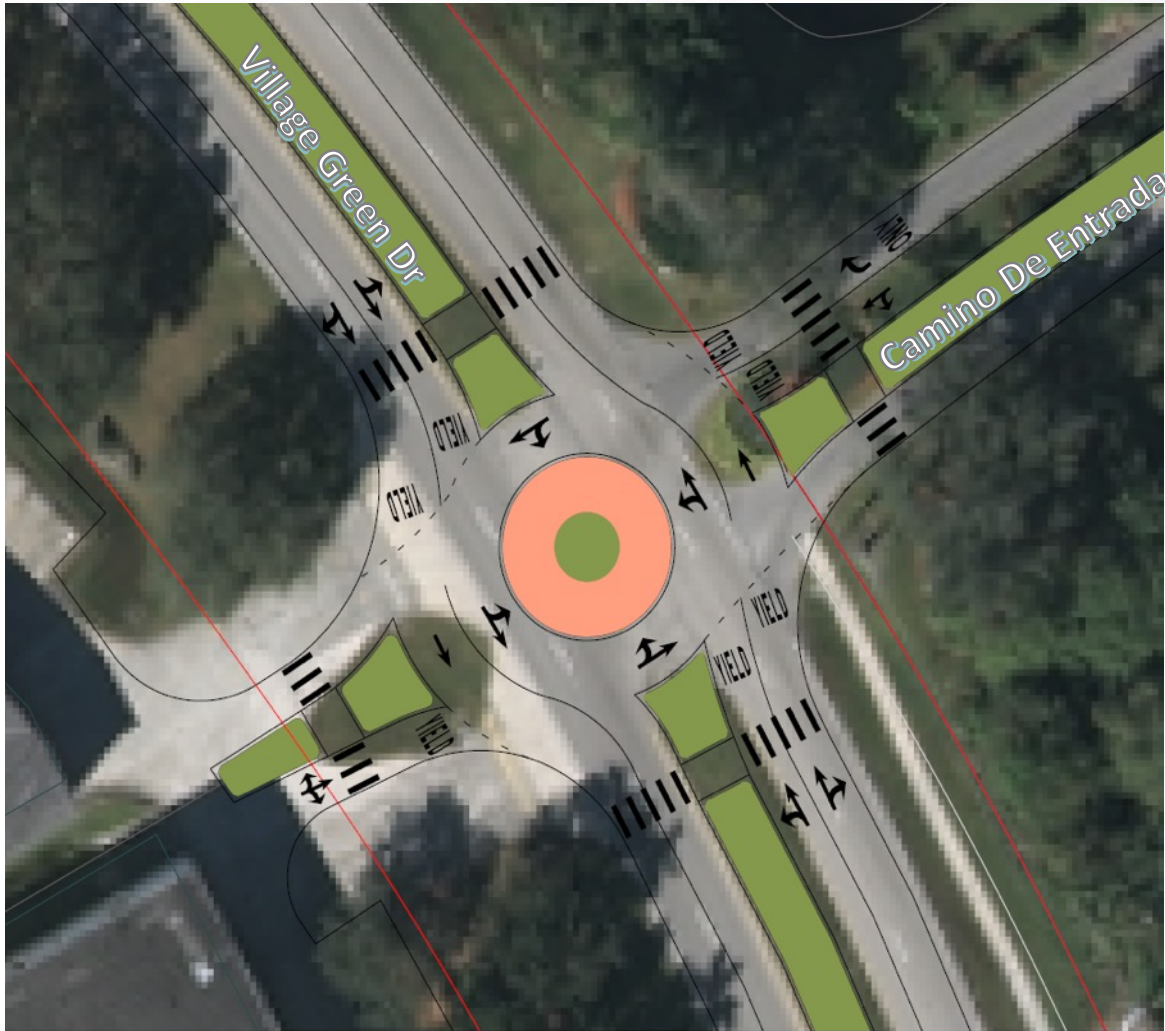


Intersection Option at Village Green Drive and Camino De Entrada

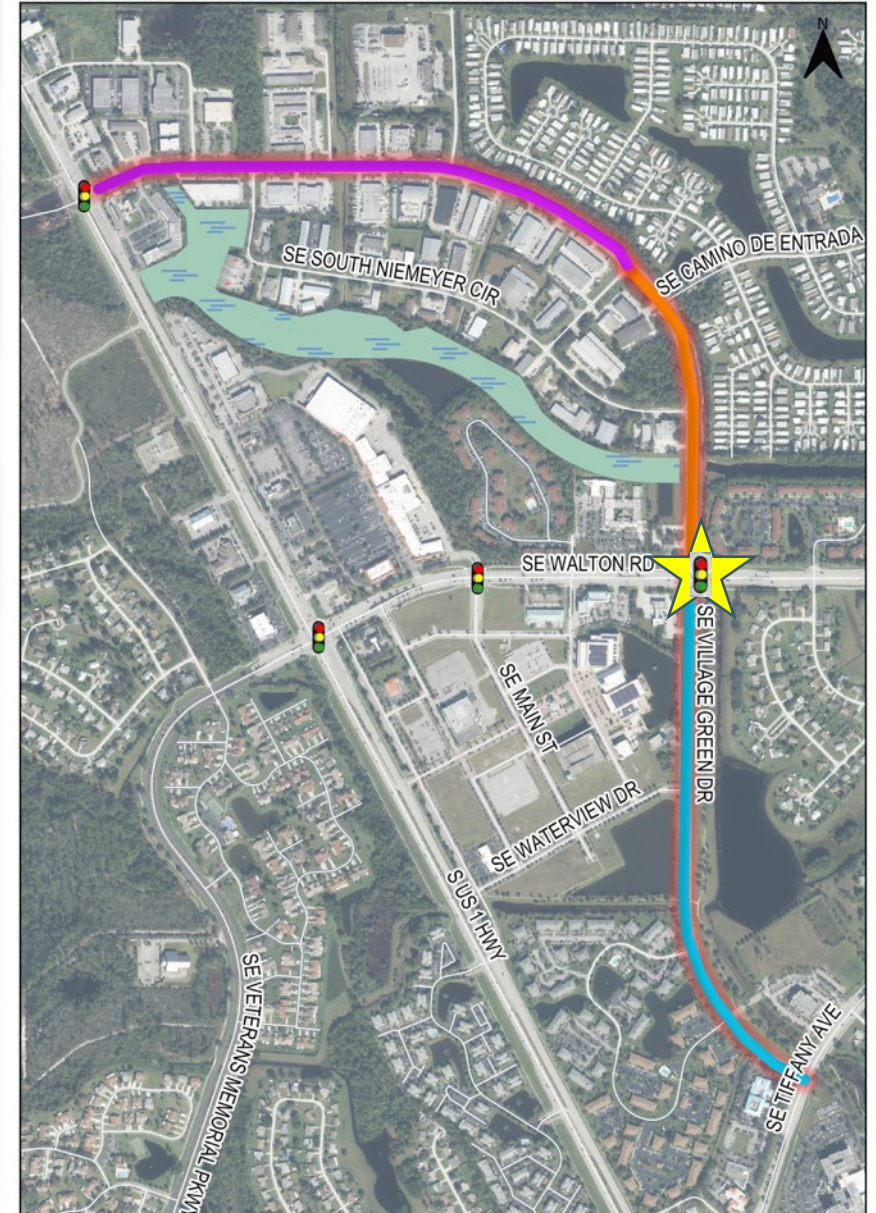
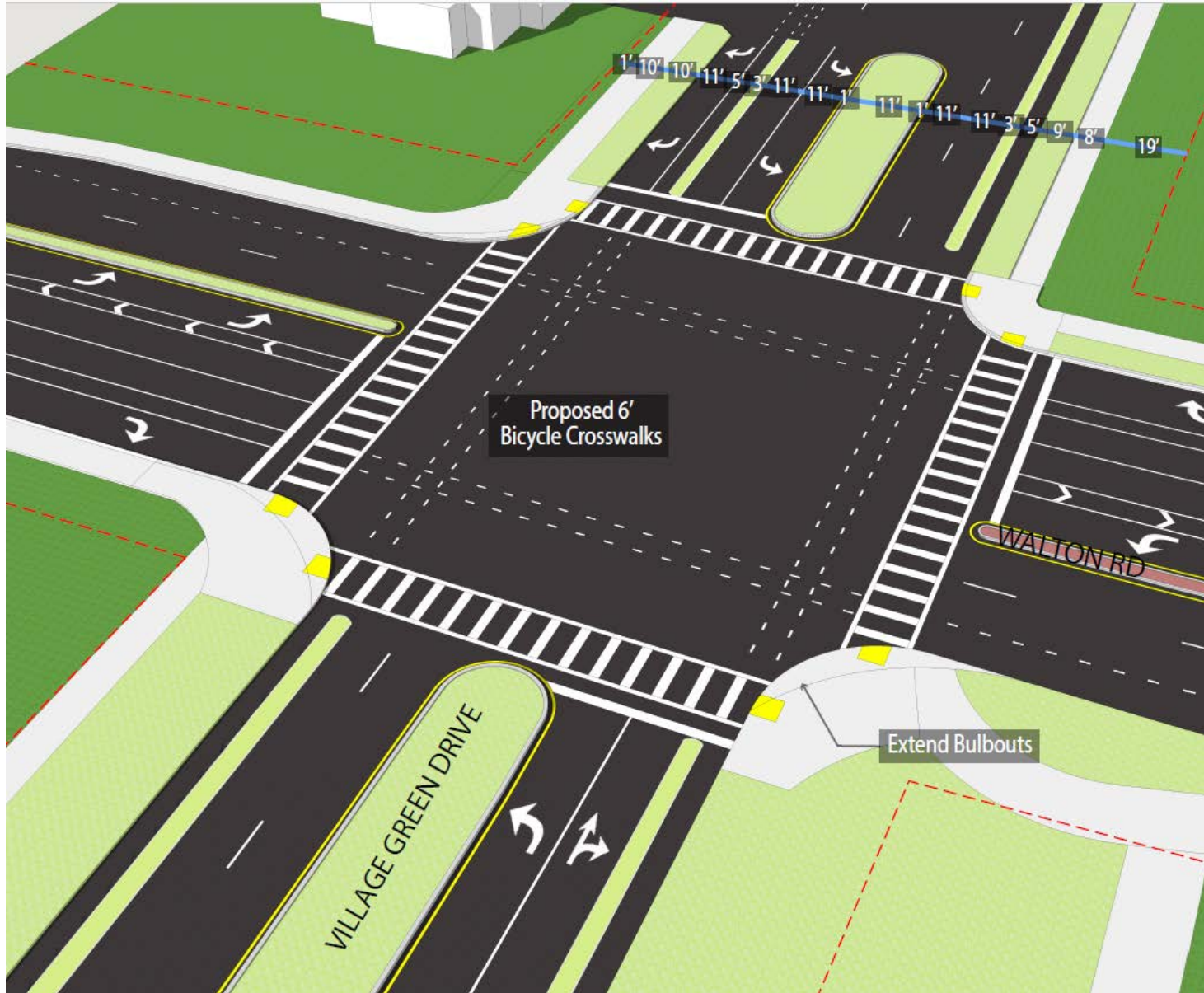


Village Green Drive and Camino De Entrada Options

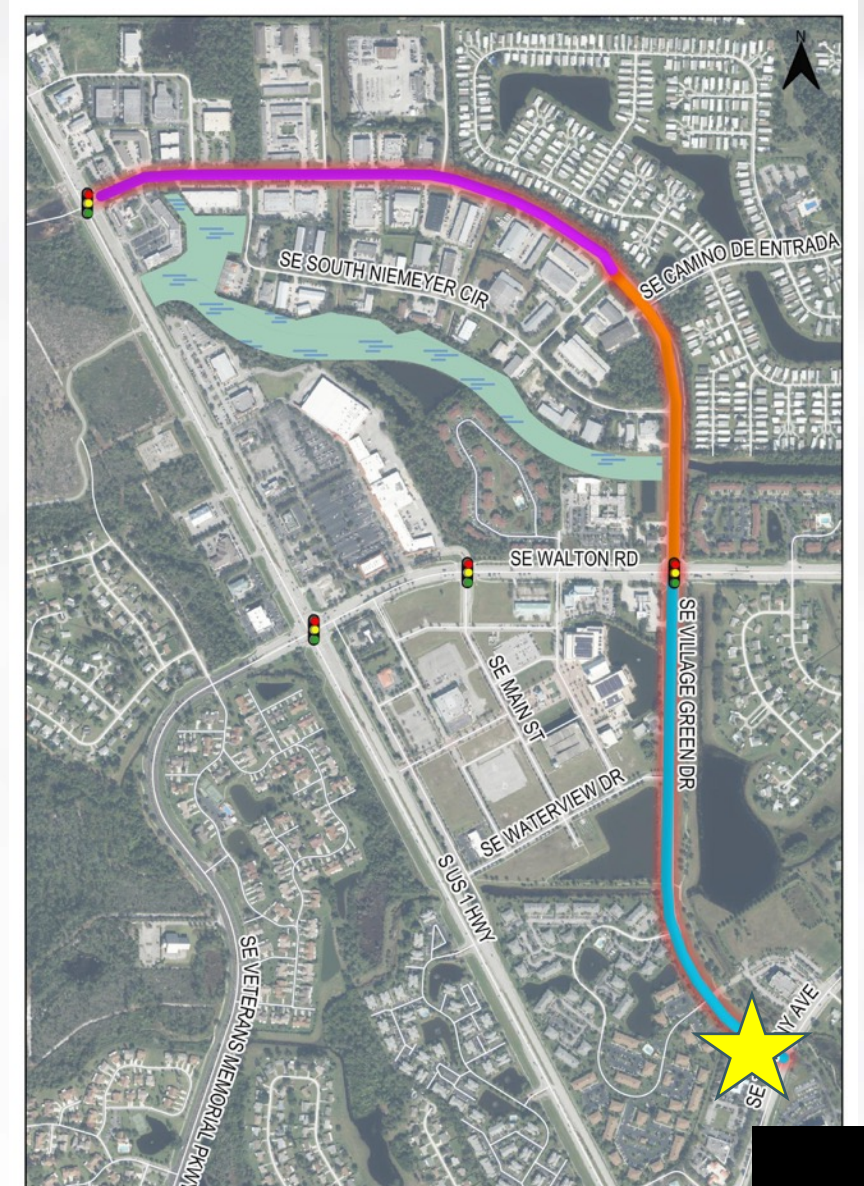
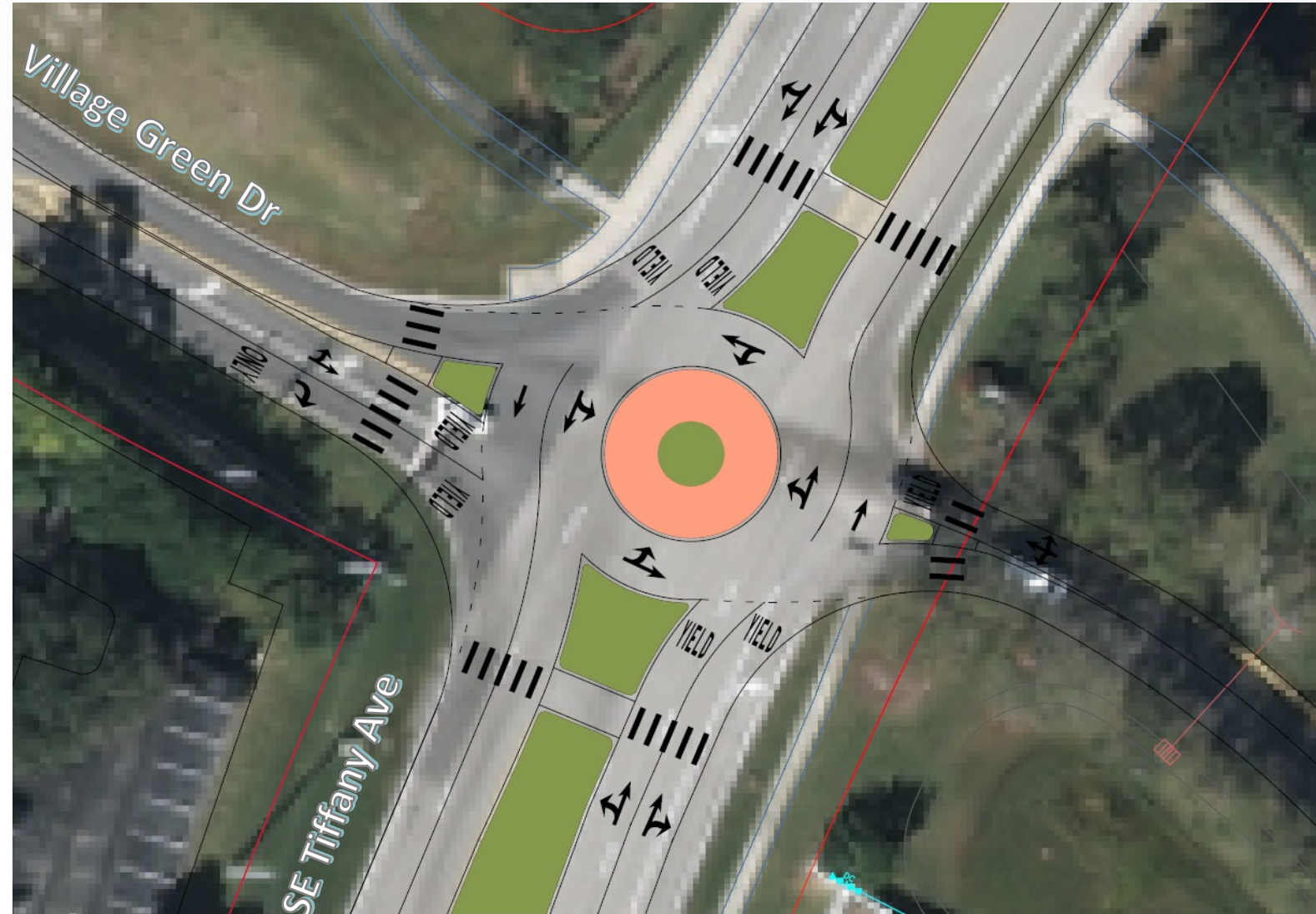
Poll # 8



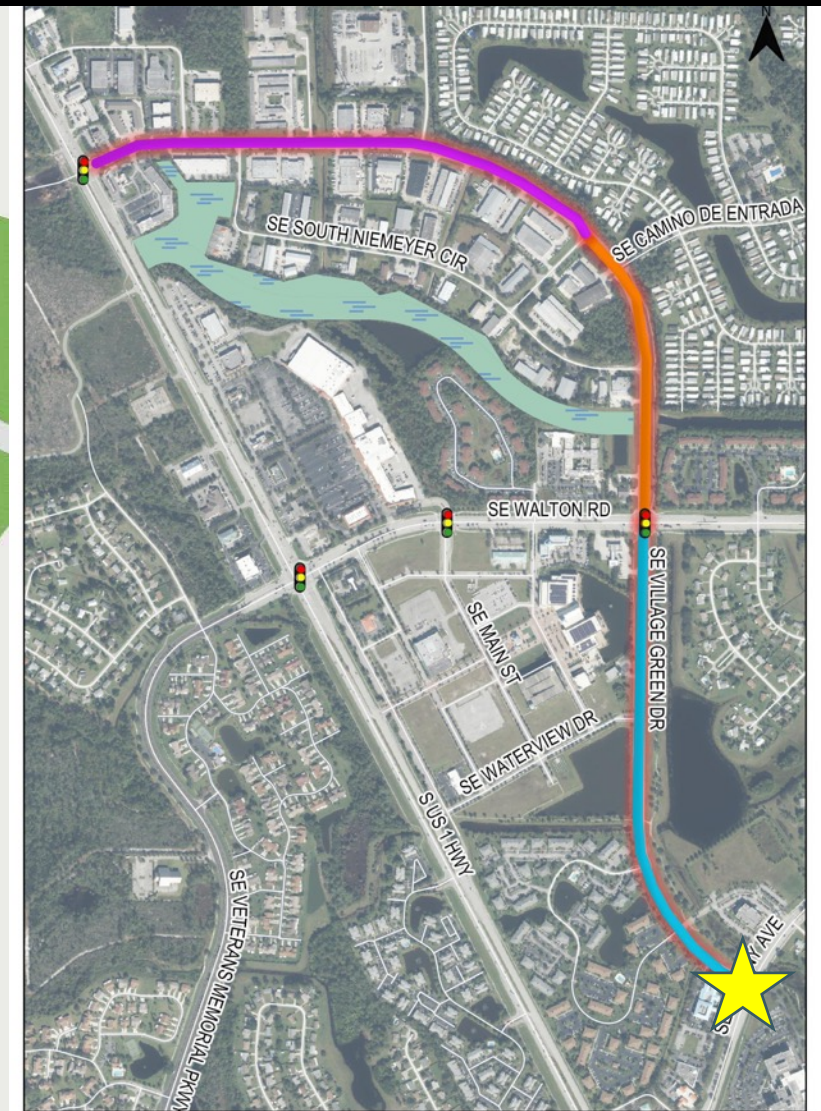
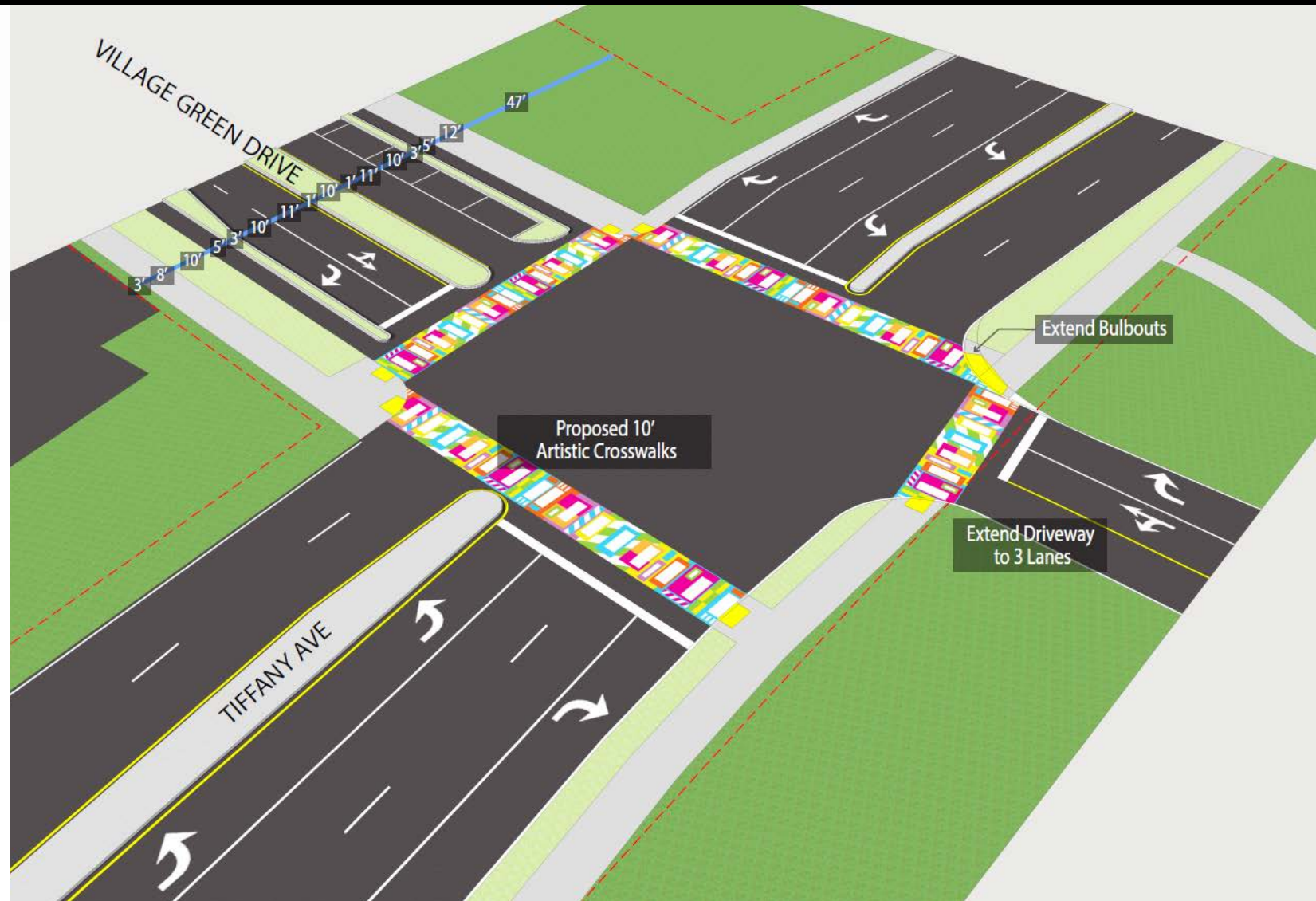
Intersection Concept – Walton Road



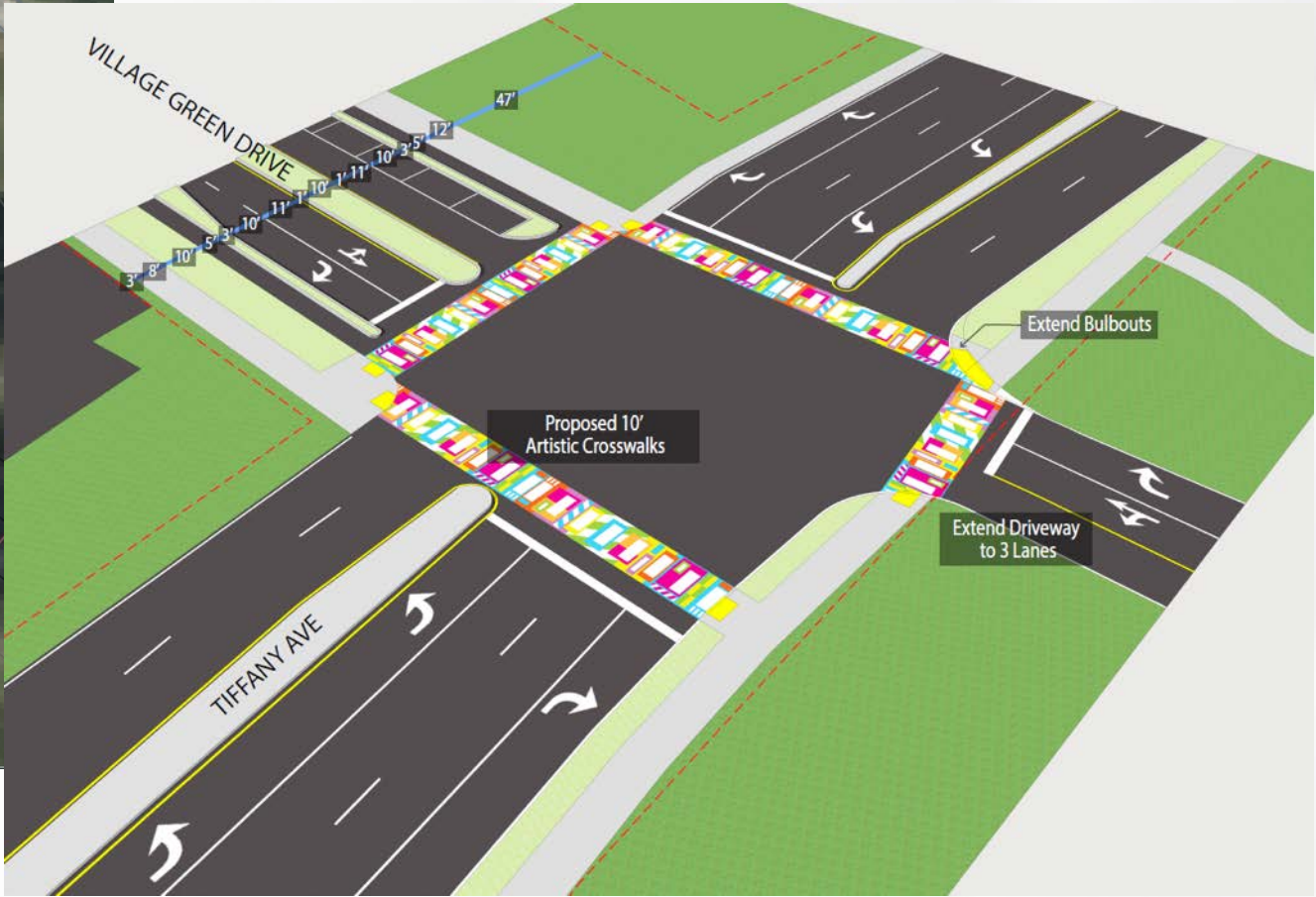
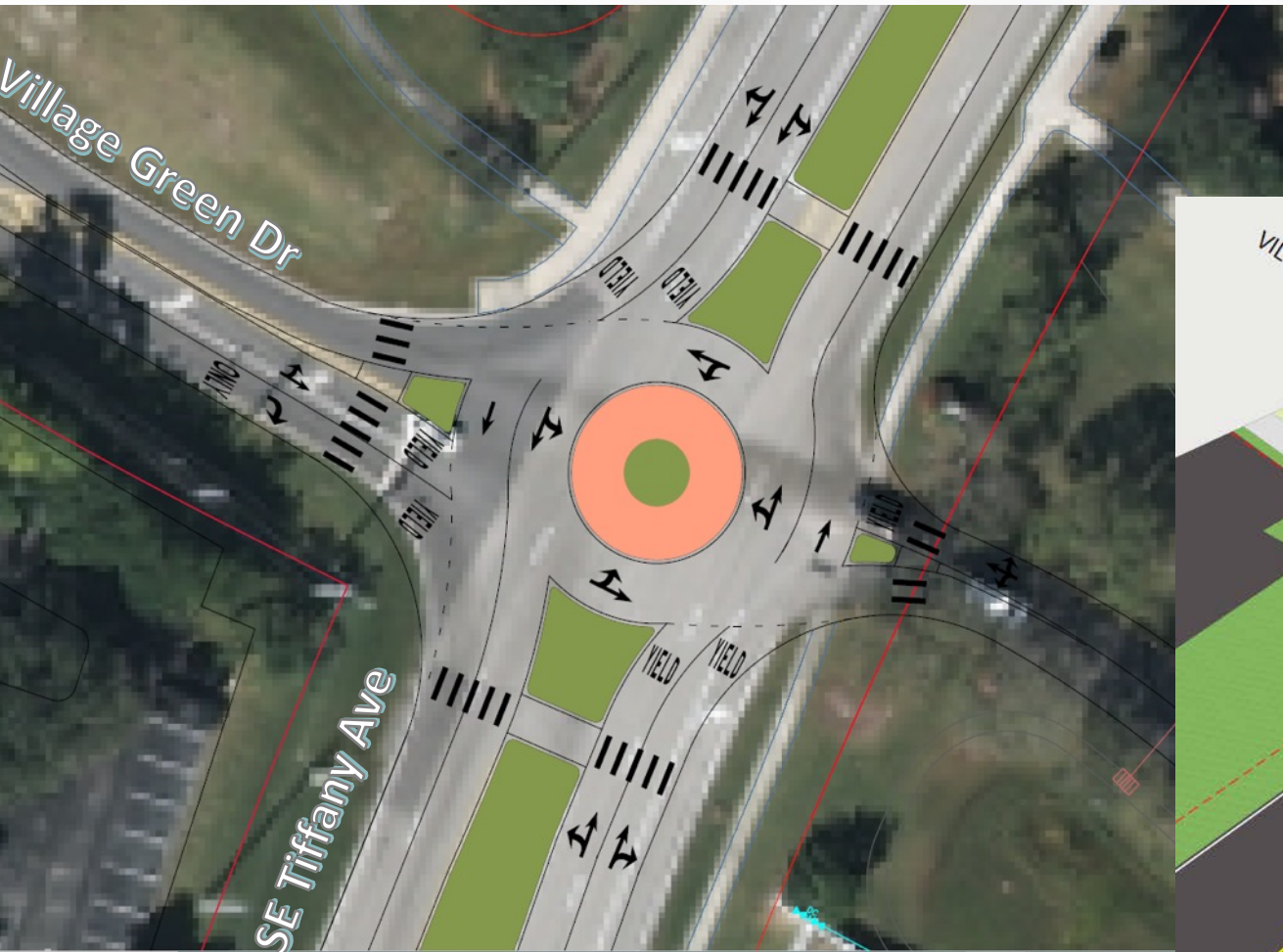
Roundabout Option at Village Green Drive and SE Tiffany Ave



Intersection Option at Village Green Drive and SE Tiffany Ave

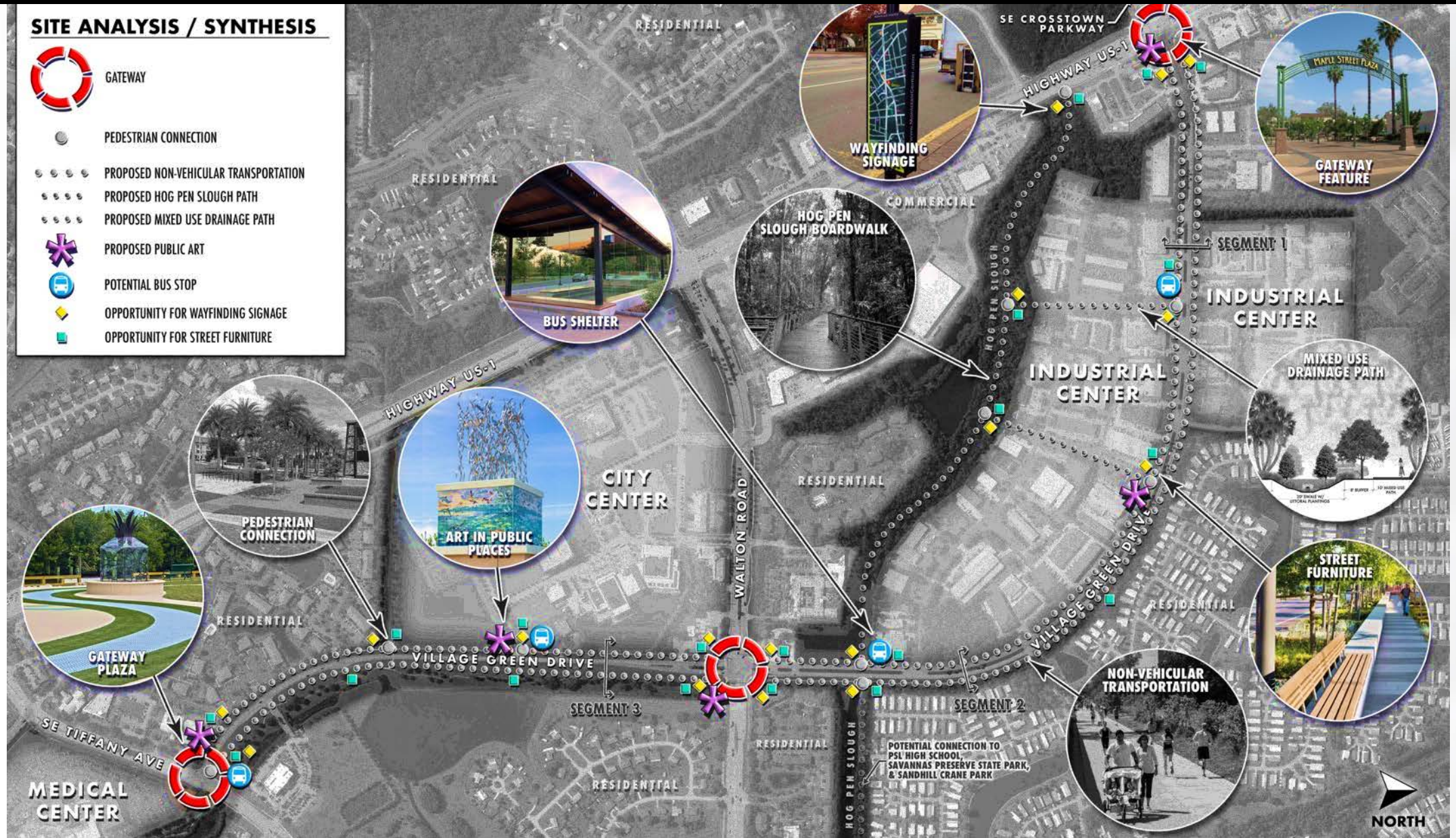


Village Green Drive and SE Tiffany Ave Options





Site Analysis



Gateway Monument & Plaza Examples



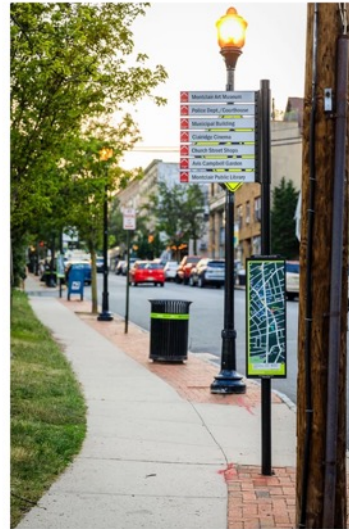
Transit Improvements



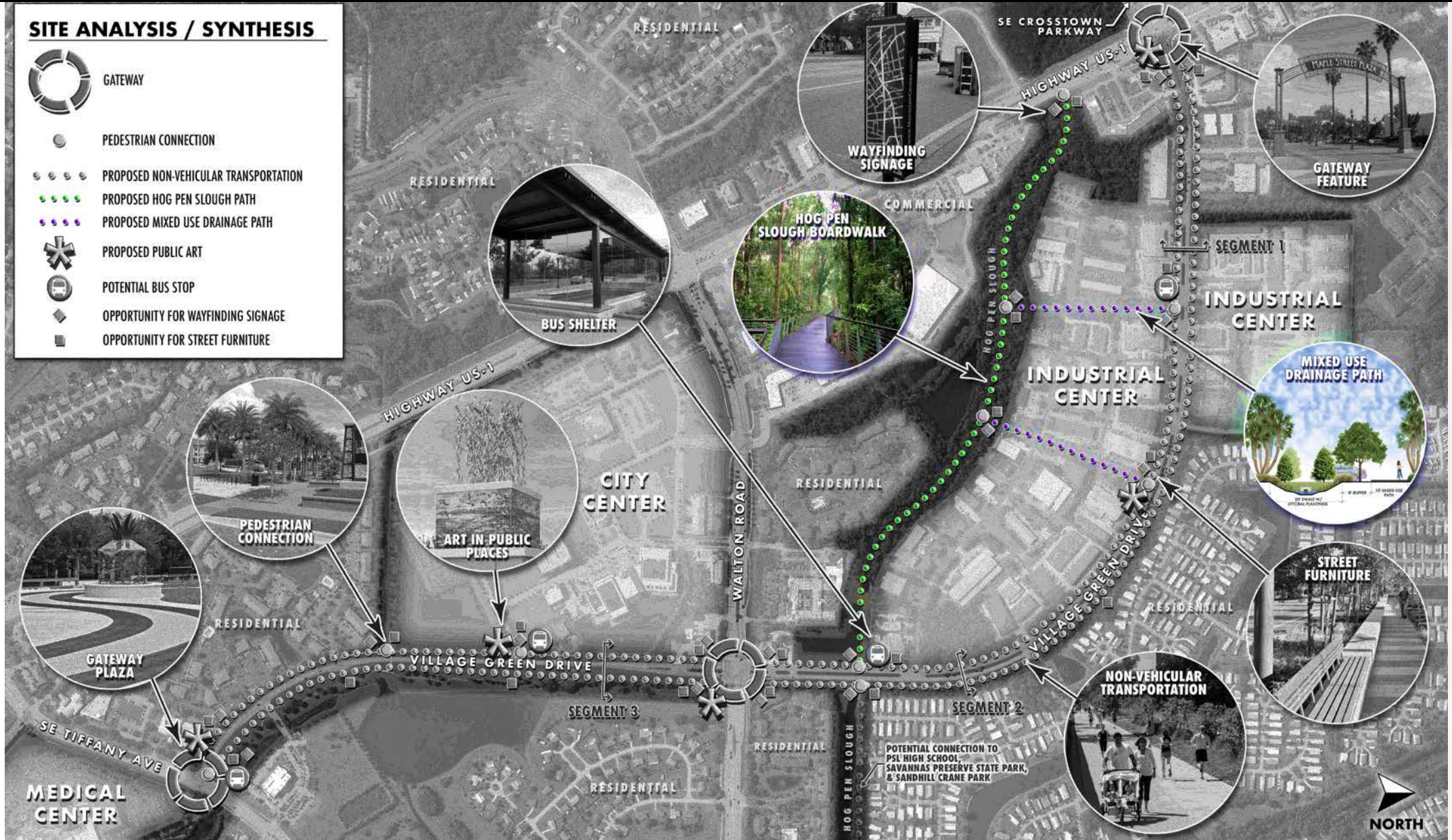
Street Furniture Examples



Wayfinding Examples



Site Analysis



Hog Pen Slough Pathway

HOG PEN SLOUGH



POTENTIAL EXISTING
SLOUGH CHANNEL

CONCRETE
PILINGS

12' MIXED USE
BOARDWALK WITH
SIGNAGE

Elevated Pathway Examples

Poll # 10



IMAGE 1: NATIVE PASSIVE BOARDWALK- WOODEN



IMAGE 2: ENCLOSED BOARDWALK- METAL



IMAGE 3: LARGE MULTI-USE BOARDWALK- WOODEN



IMAGE 4: PASSIVE BOARDWALK - WOODEN



IMAGE 5: MULTI-USE BOARDWALK- COLORED METAL

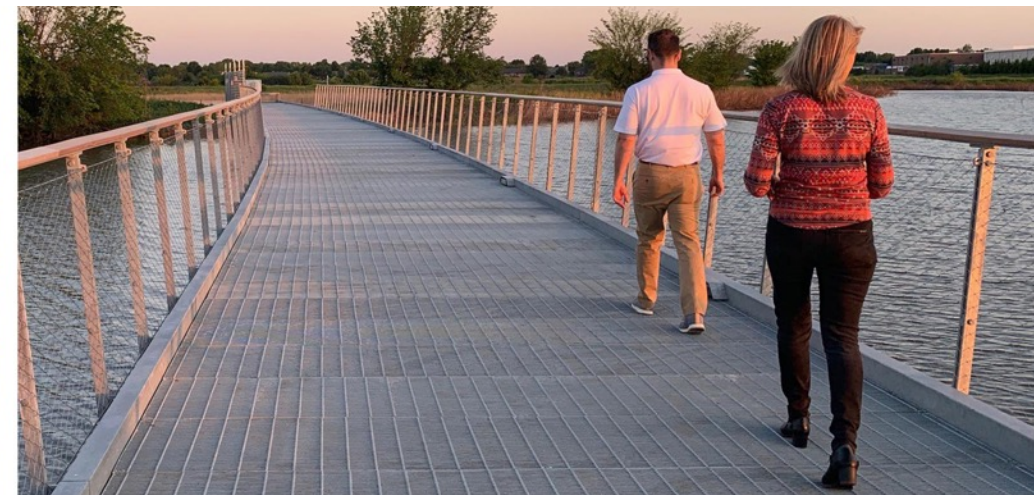
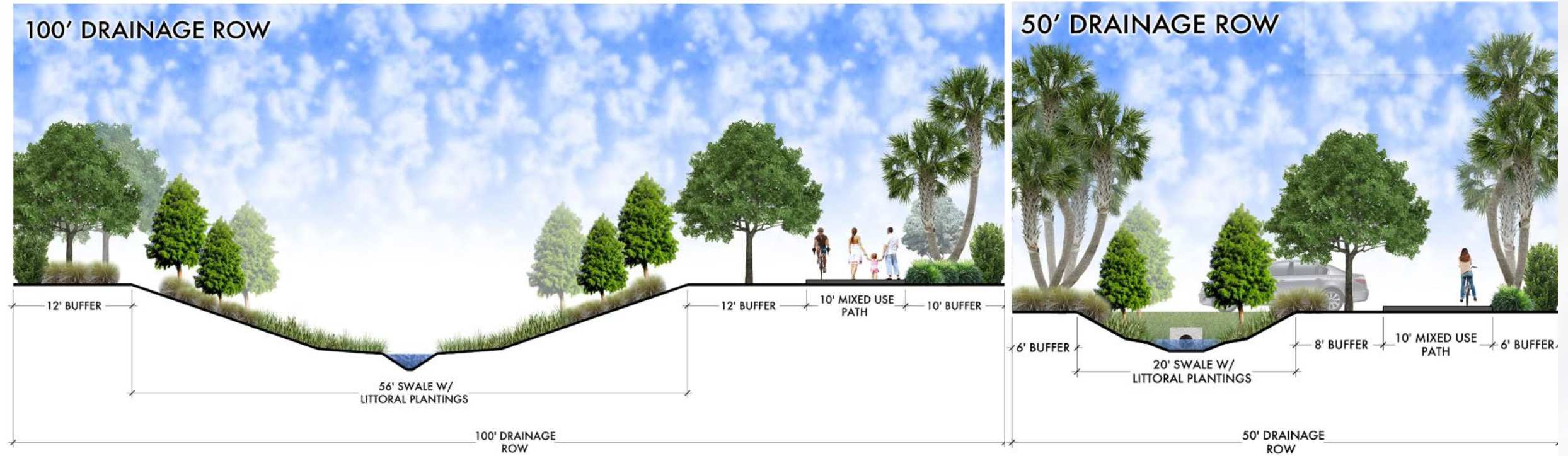


IMAGE 6: PASSIVE BOARDWALK- METAL

Pedestrian Connections & Drainage Enhancements

Poll # 11





5

Next Steps

Conceptual Design



Community Input

Community Outreach, Information, & Input

Data Analysis

Collection & Analysis of Traffic, Bicycle, Pedestrian, Transit, & Landscape Data

Design Concepts

Develop Alternative Design Concepts to Present to the Public & Stakeholders

Final Master Plan

15% Design Plan Presented to City Council



Tuesday, March 23, 2021
5:30 pm to 6:30 pm

PORT ST. LUCIE
2021 CITIZEN
SUMMIT
A CITY FOR ALL PEOPLE BY THE PEOPLE

MidFlorida Credit Union Event Center
9221 SE Event Center Place

AGENDA



Welcome and Introductions

Jennifer Davis, CRA Project Manager



Current Planning Initiative

MARLIN Engineering Team

Q&A

Question & Answer Session



Questions &
Comments

Thank you!

City Contact:

Jennifer Davis
CRA Project Manager
JDavis@cityofpsl.com
(772) 344-4342



Project Contact:

Christina Fermin
Project Manager
CFermin@marlinengineering.com
(954) 870-5064

MARLIN