

Neighborhood Meeting



NEIGHBORHOOD IMPROVEMENT & COMMUNITY ENGAGEMENT

City of Port St. Lucie Neighborhood Services Department

Neighborhood Services Director

Assistant Director

Community Programs Administrator

Community Services & Grants Manager

Administrative Support, Finance & Budget

Solid Waste

Code Compliance Manager

N.I.C.E.
(Neighborhood Improvement and Community Engagement) - Neighborhood Planning Program

Housing & Social Services

Special Magistrate

Code Compliance

N.E.A.T.
(Neighborhood Engagement Action Team) - Interdepartmental collaboration group

Nuisance Abatement





MISSION:

is to provide **Exceptional Municipal Services** that are **Responsive to our Community** while **Planning for Smart and Balanced Growth** that is managed in a **Financially Responsible Manner**.

"Port St. Lucie is a Safe, Beautiful, and Prosperous City for All People - Your Hometown."

VISION:

Port St. Lucie has **Great Neighborhoods**, excellent **Educational Opportunities** for lifelong learning, a **Diverse Local Economy** and **Employment** options, **Convenient Transportation**, unique natural resources including the **St. Lucie River**, and **Letsure Opportunities** for an **Active Lifestyle**.

Adopted July 9, 2018

THE STRATEGIC PLAN OFFERS RESIDENTS A PREVIEW OF PORT ST. LUCIE'S FUTURE

Port St. Lucie's Strategic Plan was designed to guide city officials as they work toward the long-term success of the community.

There is a dashboard that shows goals & targets...

GOAL 2: VIBRANT NEIGHBORHOODS

CITIZEN SURVEY RESULTS: SENSE OF COMMUNITY



Neighborhood Planning History

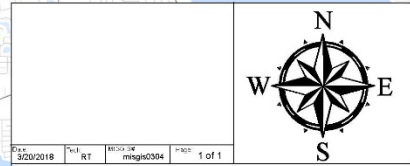
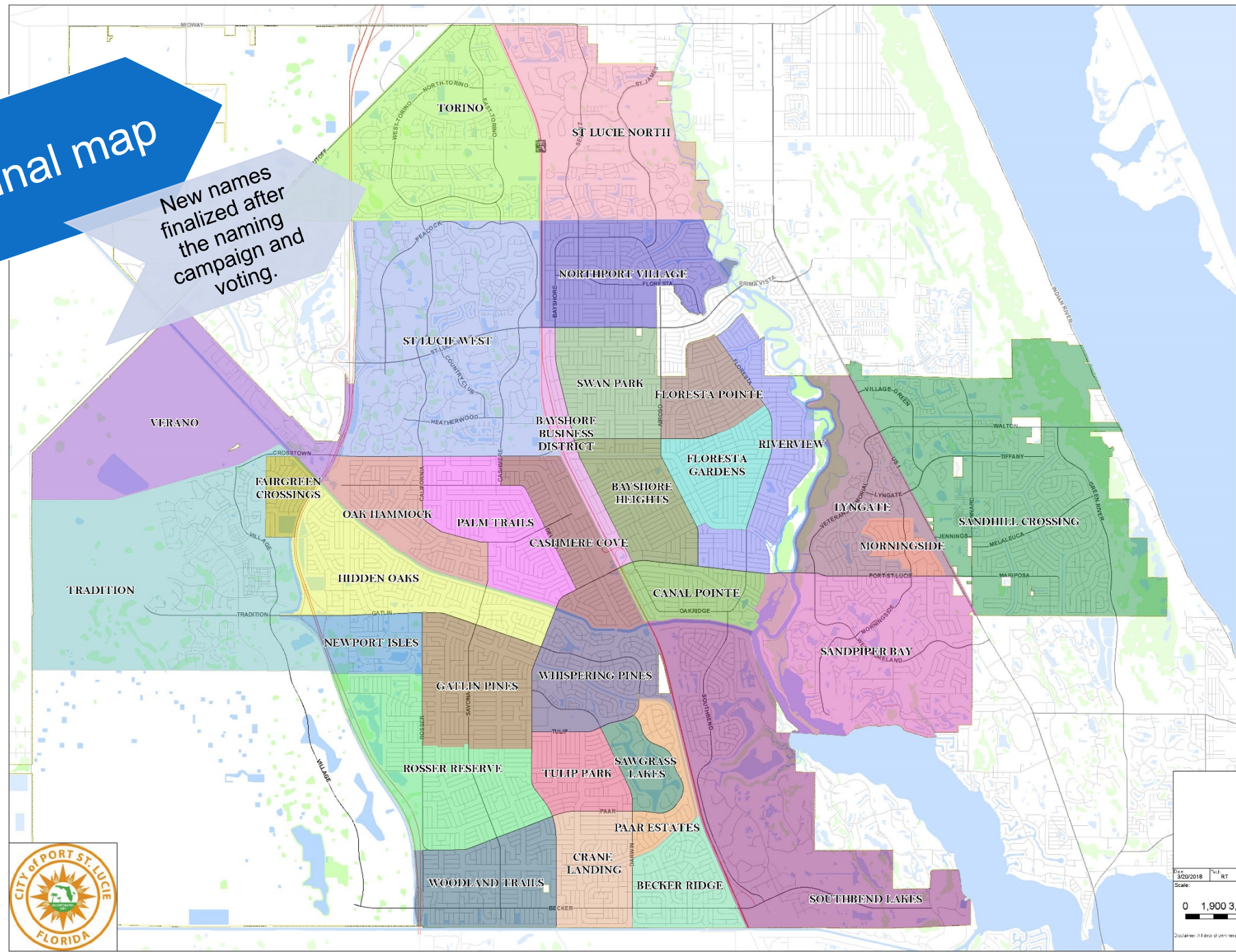
- 2004 Urban Land Institute, Established in 1936, the Institute today has more than 40,000 members worldwide, representing the entire spectrum of the land use and development disciplines.
- 2015 Tindale Oliver, Established 1989, Tindale Oliver provides planning and design services in the areas of transportation, community planning, transit and public finance solutions.
- Tasked with developing plans for six Planning Areas
- Focused on:
 - Building Identity
 - Activity Centers
 - Recreation and Leisure
 - Connectivity
 - Arts and Culture
- August 8, 2016 Neighborhood Services was created
- July 4, 2017 NICE program debuted at the Freedom Fest

Final map

New names finalized after the naming campaign and voting.

Port St. Lucie Neighborhoods

- BAYSHORE BUSINESS DISTRICT
- BAYSHORE HEIGHTS
- BECKER RIDGE
- CANAL POINTE
- CASHMERE COVE
- CRANE LANDING
- FAIRGREEN CROSSINGS
- FLORESTA GARDENS
- FLORESTA POINTE
- GATLIN PINES
- HIDDEN OAKS
- LYGATE
- MORNINGSIDE
- NEWPORT ISLES
- NORTHPORT VILLAGE
- OAK HAMMOCK
- PAAR ESTATES
- PALM TRAILS
- RIVERVIEW
- ROSSER RESERVE
- SANDHILL CROSSING
- SANDPIPER BAY
- SAWGRASS LAKES
- SOUTHBEND LAKES
- ST LUCIE NORTH
- ST LUCIE WEST
- SWAN PARK
- TORINO
- TRADITION
- TULIP PARK
- VERANO
- WHISPERING PINES
- WOODLAND TRAILS



Disclaimer: All data of this map is given for informational purposes only. No warranties of accuracy are made, implied or otherwise.



Some example projects & improvements...



**All because
of your
recycling!**

What's on our website?

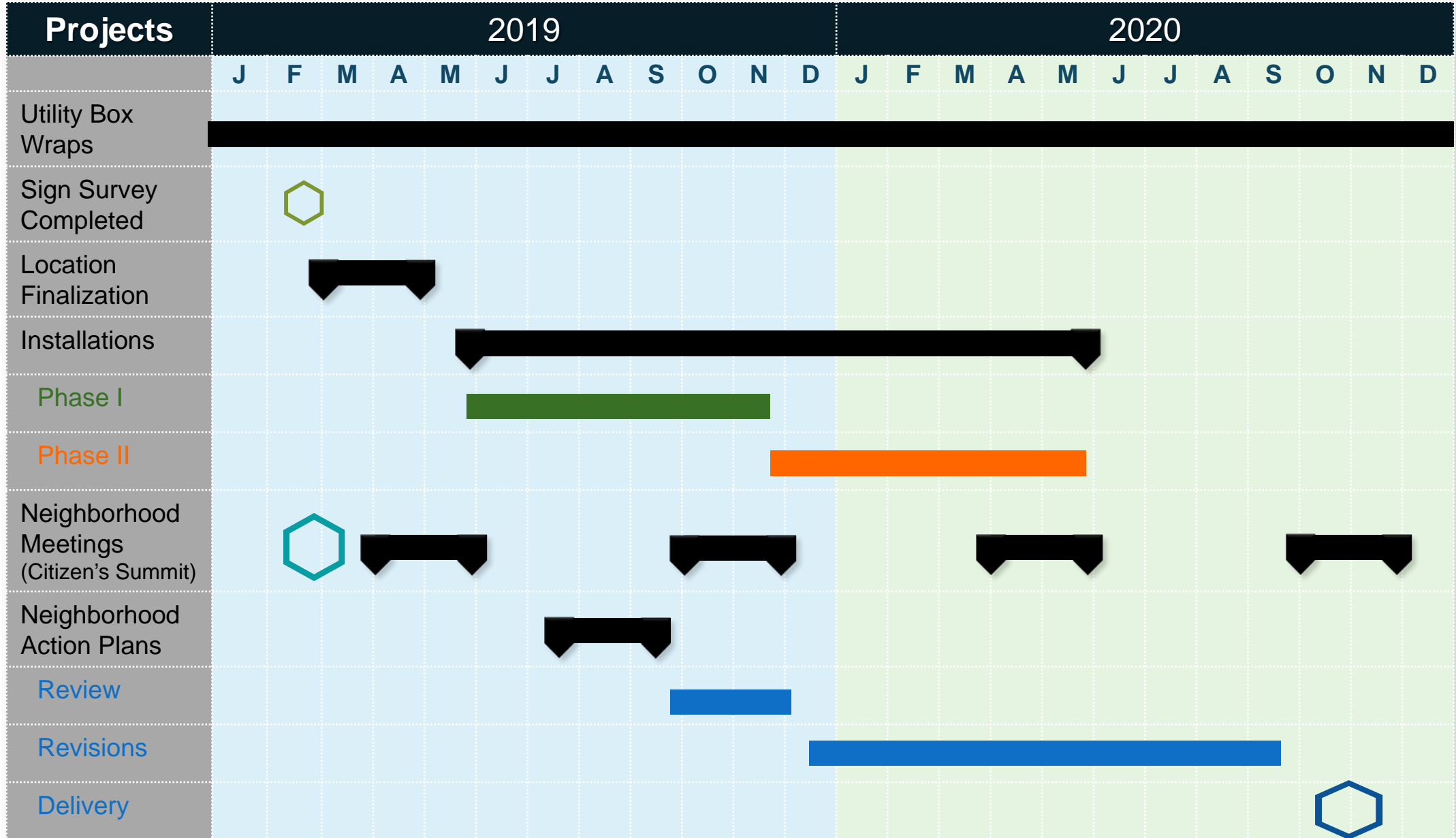


"A City for All Ages"

What's on our social media sites?



Current N.I.C.E. Projects

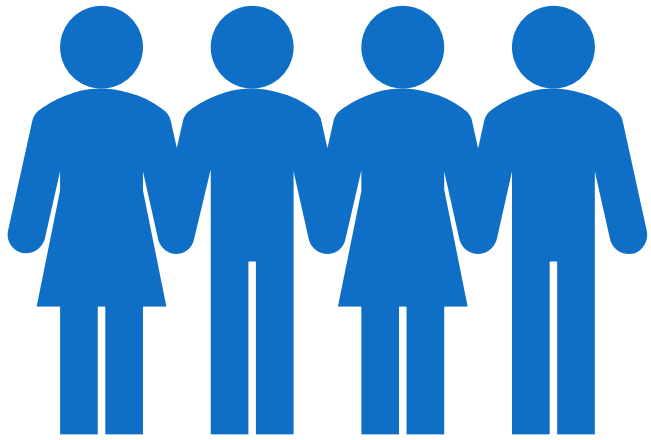


Milestones



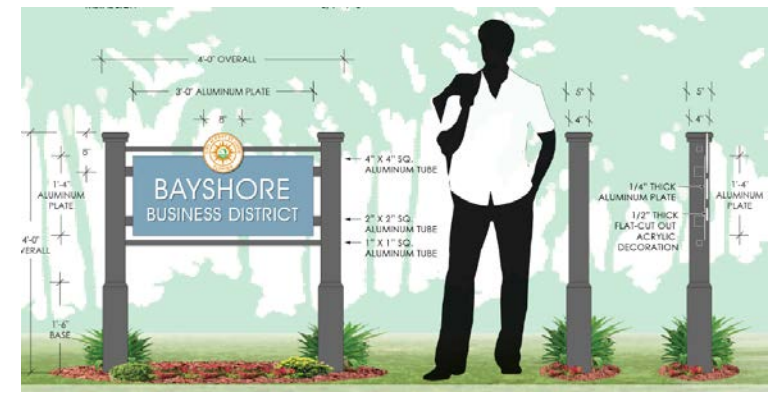
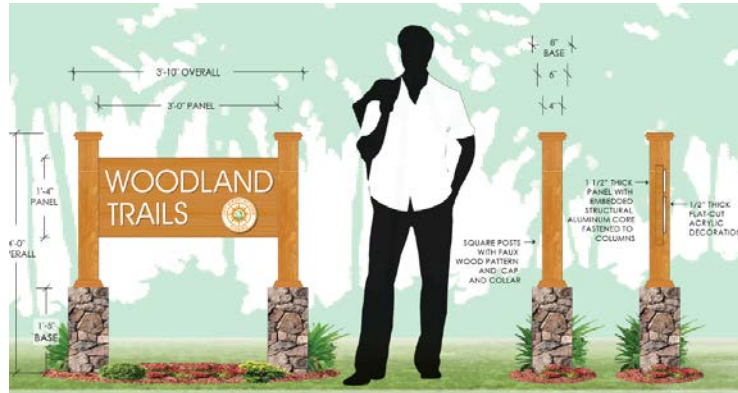
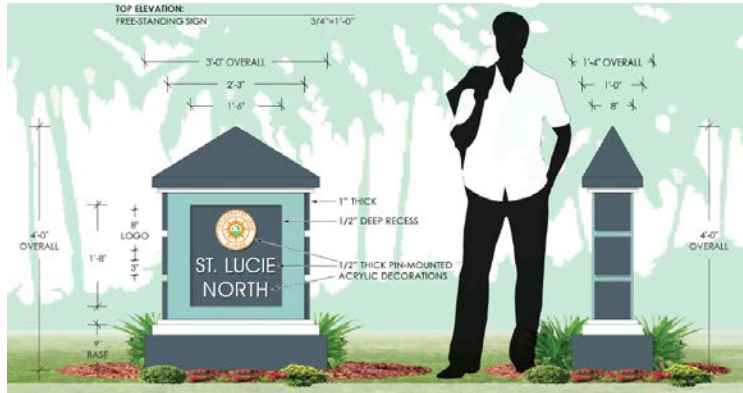


Utility Boxes



1,046 people

...took the N.I.C.E.
Neighborhood Entry Sign...



611 people voted for the Faux Wood sign.
 It was the #1 choice of every single neighborhood.



3'-10" OVERALL

3'-0" PANEL

8" BASE

6"

4"

1'-4" PANEL

4'-0" OVERALL

1'-5" BASE

WOODLAND TRAILS



SQUARE POSTS WITH FAUX WOOD PATTERN

1 1/2" THICK PANEL WITH EMBEDDED STRUCTURAL ALUMINUM CORE FASTENED TO COLUMNS

FAUX WOOD





Crosstown Update



Additional Questions in the Sign Survey

#1 Community involvement or a place to provide input

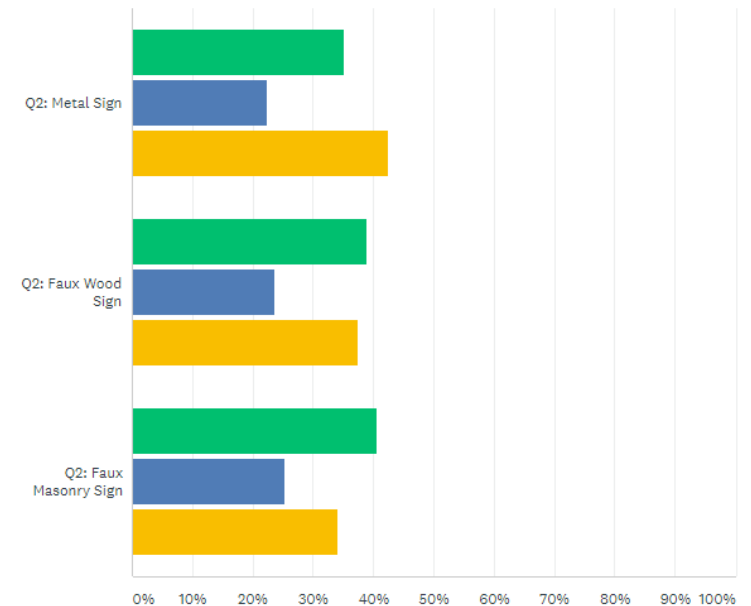
#2 Neighborhood Meet & Greet

Only about 20% voted for “A forum with Speakers to Address Topics of Interest”

Q4

Which type of event organized by the NICE program would you be most interested in attending?

Answered: 958 Skipped: 88



■ Neighborhood Meet & Greet: An opportunity to get to know your neighbors
■ Forum With Speakers to Address Topics of Interest: Such as starting a Neighborhood
■ Community Involvement for Neighborhood Improvements: A Voluntary Neighborhood

Meetings Scheduled



NICE NEIGHBORHOOD MEETING SCHEDULE

NEIGHBORHOOD IMPROVEMENT & COMMUNITY ENGAGEMENT

A perfect opportunity to strike up a conversation and meet your neighbors. Ask the Neighborhood Services Department questions and provide input on various city projects and events in your neighborhood. We encourage residents of all ages to attend.

SATURDAY, MARCH 23, 2019 AT 10AM

Floresta Gardens, Floresta Pointe, and Riverview COMMUNITY CENTER, 2195 SE AIROSO BLVD.

SATURDAY, MARCH 30, 2019 AT 10AM

Fairgreen Crossing, Hidden Oaks, Oak Hammock, and Palm Trails COMMUNITY CENTER, 2195 SE AIROSO BLVD.

TUESDAY, APRIL 02, 2019 AT 6PM

Canal Pointe, Lyngate, Morningside, and Sandhill Crossing CIVIC CENTER, 9221 SE CIVIC CENTER PL.

THURSDAY, APRIL 04, 2019 AT 6PM

Bayshore Heights, Cashmere Cove, Northport Village, and Swan Park CITY HALL, BUILDING B, 121 SW PORT ST. LUCIE BLVD.

SATURDAY, APRIL 06, 2019 AT 10AM

Gatlin Pines, Newport Isles, Parks Edge, Portofino Isles, and Whispering Pines COMMUNITY CENTER, 2195 SE AIROSO BLVD.

SATURDAY, APRIL 13, 2019 AT 10AM

Paar Estates, Rosser Reserve, Sawgrass Lakes, and Tulip Park COMMUNITY CENTER, 2195 SE AIROSO BLVD.

SATURDAY, MAY 04, 2019 AT 10AM

Becker Ridge, Crane Landing, and Woodland Trails COMMUNITY CENTER, 2195 SE AIROSO BLVD.

SATURDAY, MAY 11, 2019 AT 10AM

Torino COMMUNITY CENTER, 2195 SE AIROSO BLVD.

Other neighborhoods will meet at their already established neighborhood management meetings: Verano, Tradition, St. Lucie West, St. Lucie North, Southbend Lakes (including Tesoro and Veranda), Sassafras Bay, and Bayshore Business District.

WWW.CITYOFPSL.COM/NICE • 772-871-7395

Meetings Advertised

Ask questions and provide input on various city projects and events in your neighborhood.

What we can accomplish together:

- capital project improvements
- neighborhood watch groups
- neighborhood clean-ups
- fundraisers
- park events
- neighborhood walking groups
- outdoor movie nights
- children's activities
- workshops and more.

We encourage residents of all ages to attend.

If you have any questions, please write to: NICE@cityofpsl.com or call 772-871-7395.

Why organize these meetings?

BENEFITS

- Reduces crime
- Provides a better quality of life
- Provides a better sense of security, responsibility, and personal control
- Fosters neighborhood unity and community pride
- Develops partnerships with the community and the police department

NEIGHBORHOOD WATCH

TAKING THE TIME TO PREVENT CRIME

Join a Neighborhood Crime Watch Group with the Port St. Lucie Police Crime Prevention Unit

772-871-5027

ADOPT-A-STREET

JOIN THE TEAM TO KEEP PORT ST. LUCIE BEAUTIFUL!

MAKING A DIFFERENCE

102 Groups working together to create awareness for litter prevention, promote community building, increase property values, and keeping streets cleaner.

BECOME A VOLUNTEER

Participants Include: Individuals, Church Groups, Businesses, Organizations, HOA's/Neighborhood Associations, Schools, and more!

Volunteers remove litter along their 1 mile of adopted roadway once a month (or more) and submit a litter form to KPSLB. The City provides the tools: tongs, bags, safety vests and training.

Since 2015	
We have collected:	
7,971.95 Garbage Bags	159,439 Pounds of Trash
12,959 Volunteer Hours	2,268 Miles of Roadway Cleaned

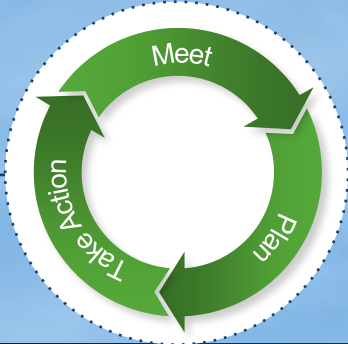
Teamwork accomplishes more:

(772) 871-5103 • www.CityofPSL.com/KPSLB



What do you want
your neighborhood
(group) to look
like?

The Iceberg Theory





Thank You!