

Torino Regional Park Master Plan

Port St. Lucie, Florida



August 24, 2023

Introductions



Kelly Boatwright | Parks Administrator - Projects

Mike Kendrick | Deputy Director

Bradley Keen | Assistant Director

Paul Grives | Project Coordinator



Jonathan Haigh | Project Manager

Kristen Alexa | Landscape Architect

Nick Kuhn | Park Planner



Heath Stocton | Director of Public Works



Virtual Participation

Microphones
are muted



Utilize Q&A feature
Q&A will be at the end of
the presentation



Visit project website for
Torino Regional Park
project updates

Agenda

- 1** Project Progress
- 2** Public Input Review
- 3** Park Programming and Anticipated Amenities
- 4** Transportation Projects Update



1 Project Progress

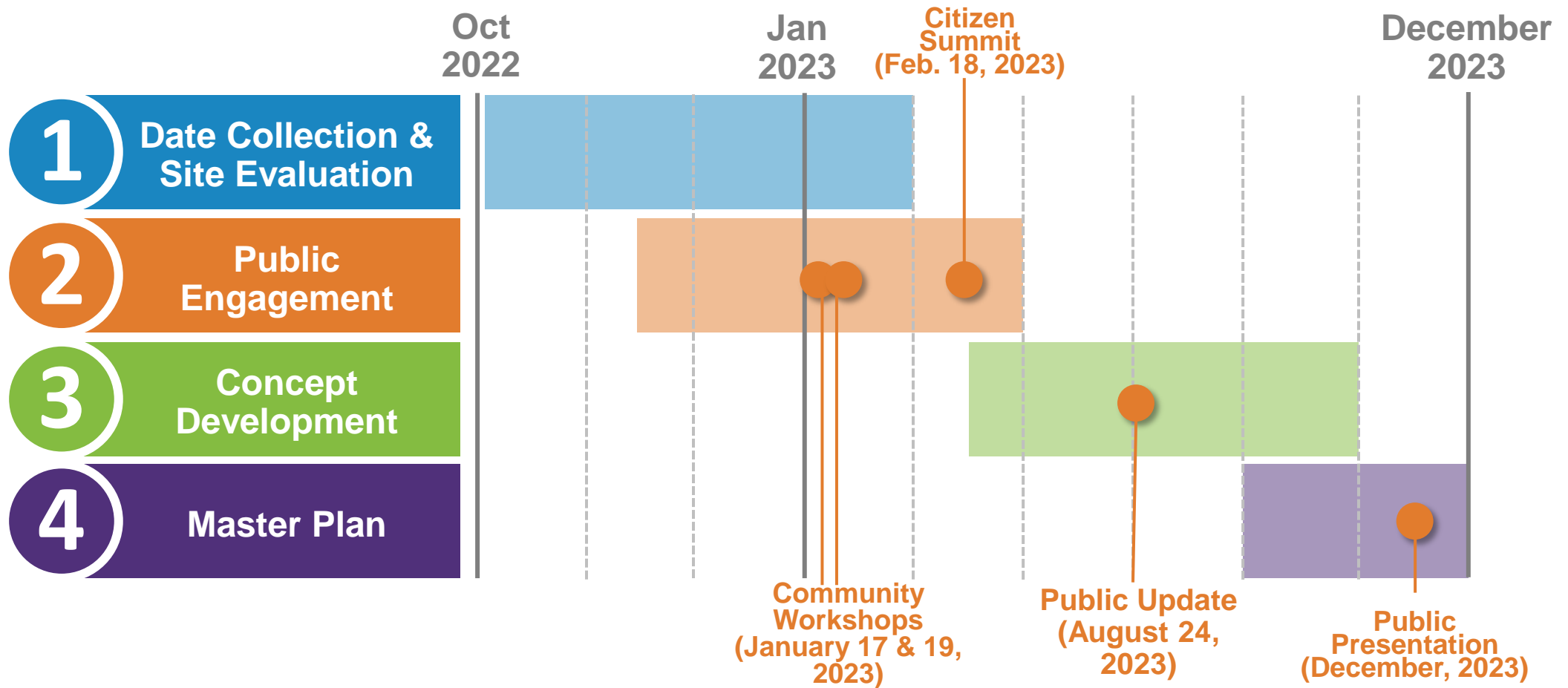


Four Step Process



We Are Here

Schedule

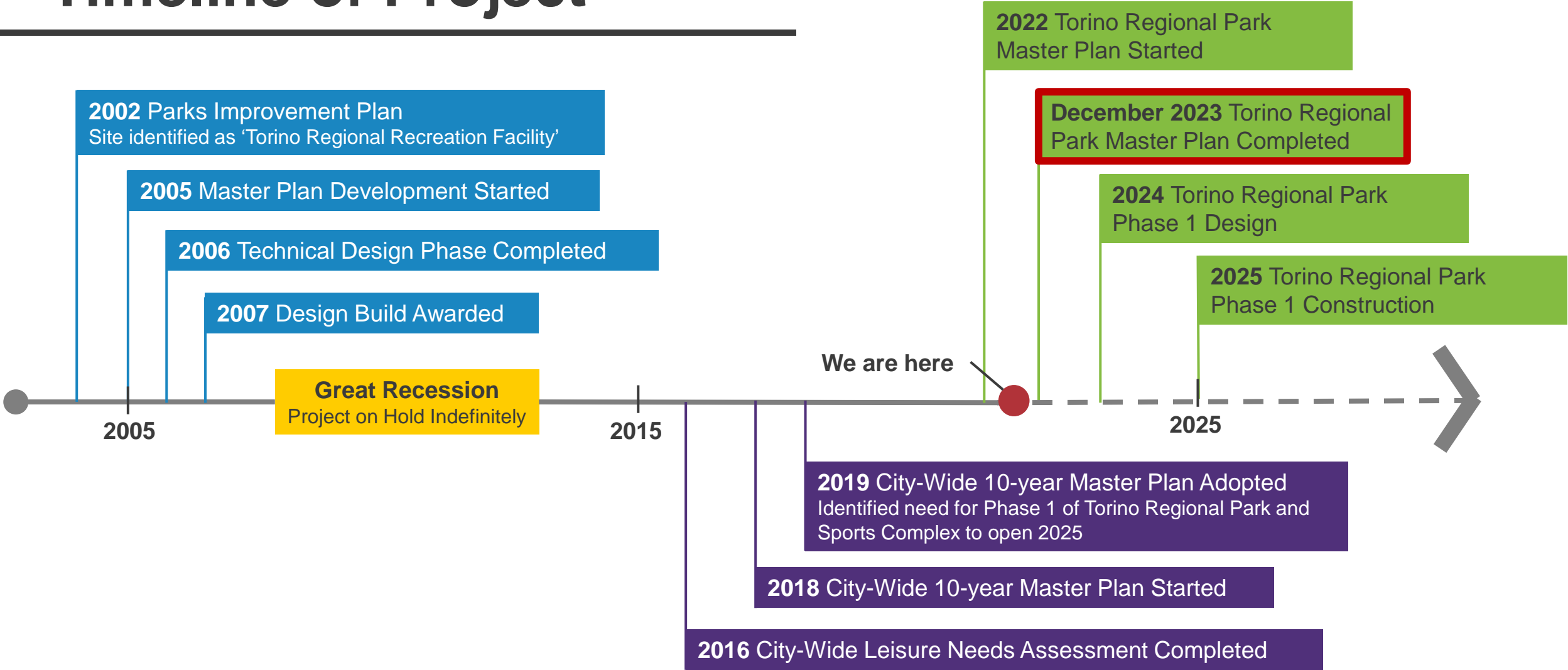


Aerial Map

- Three (3) Parcels
- Combined = 192.17 acres
- Includes former Police Training Site
- Current lease for RCA Club
- Several existing utility infrastructure elements on site



Timeline of Project



2 Public Input Data Review

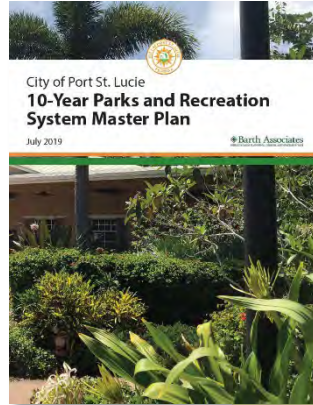
Parks and Recreation Master Plan Results

Start where we ended:

- Reference to city-wide master plan

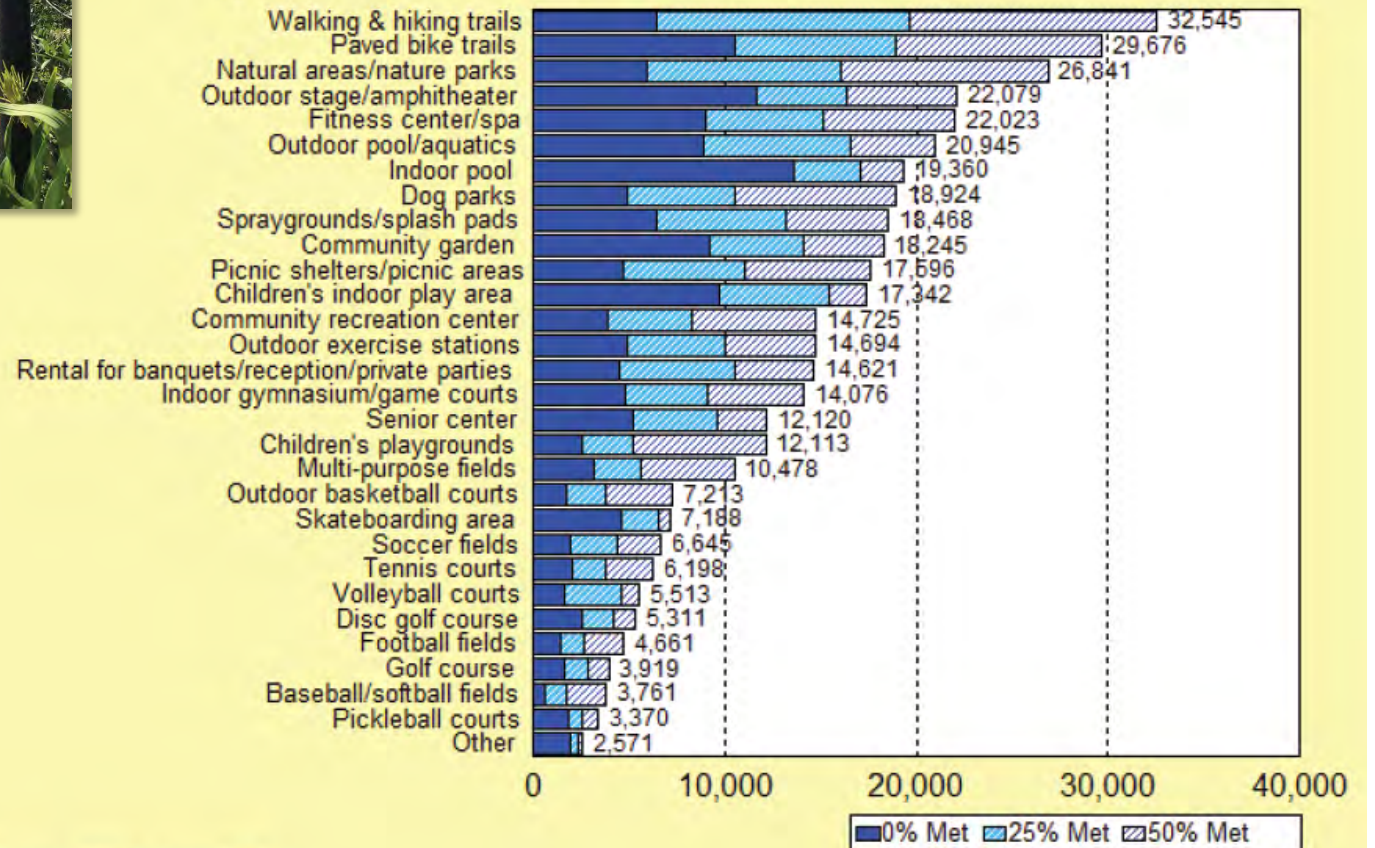
City-wide Needs

- Walking, biking, natural areas, pool, fitness are top needs
- Calls for a potential balance of passive and active amenities opportunities



Q18. Estimated Number of Households Whose Needs for Facilities Are Being Met 50% or Less

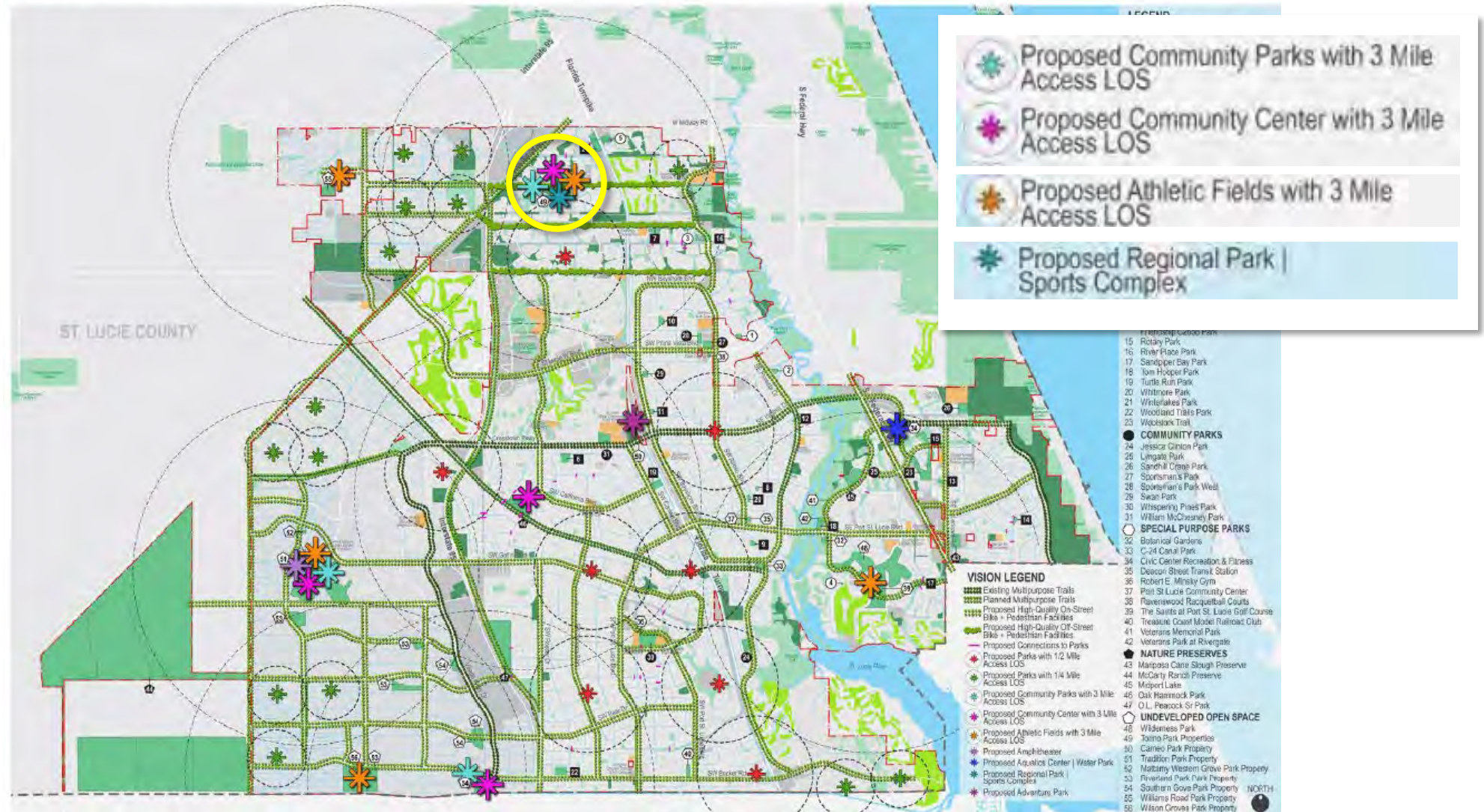
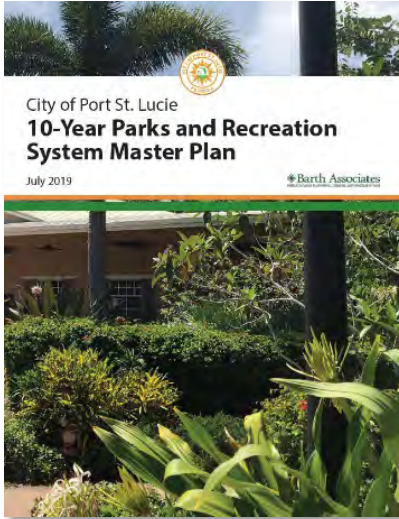
by number of households based on 71,430 households in the City of Port St. Lucie



Source: ETC Institute (2018)

Parks and Recreation Master Plan Results

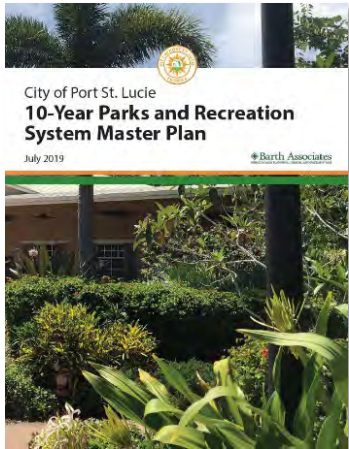
Figure 4.36 - Parks and Recreation System Vision



Public Input Process

Outputs:

- Desires
- Needs
- Special Interests
- Community support
- Operations & Maintenance



Qualitative
(Public and Stakeholder Input)

Observational
(Site Evaluation)

Quantitative
(Facilities LOS and Recreation Trends)

Outputs:

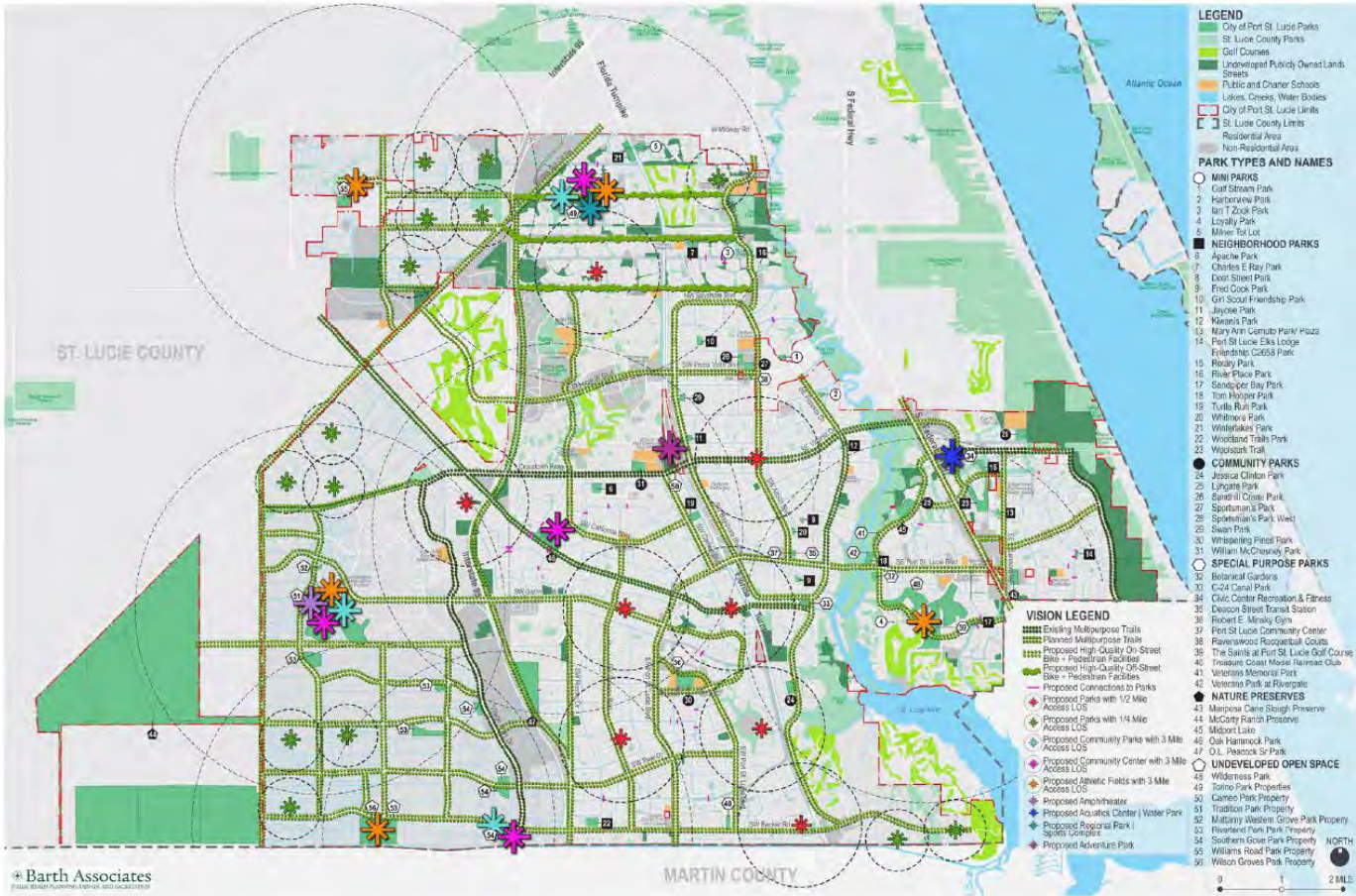
- Needs
- Capacity
- Forecasting

Outputs:

- Site Opportunities
- Constraints
- Budget

Consensus of park program needs

2019 Master Plan Findings



	City of Port St. Lucie	Benchmark Cities					NRPA Benchmarks	
	2017 LOS	City of Cape Coral	Clearwater	City of Ft. Lauderdale	City of Palm Bay	City of Tallahassee	NRPA Benchmark 1 Median	NRPA Benchmark 2 Median
Playground	13,525	7,640	4,185	4,093	-	6,368	3,000	5,065
Multi-purpose Fields	31,557	-	5,650	7,765	-	5,163	12,083	14,186
Multipurpose Synthetic Fields	-	-	113,000	-	-	-	28,728	68,514
Soccer Fields	18,934	10,187	-	7,503	-	15,921	11,692	21,639
Football Fields	94,672	30,561	-	178,590	-	-	22,615	54,818
Cricket Field	-	-	-	-	-	-	160,000	109,000
Field Hockey Field	-	-	-	-	-	-	15,757	n/a
Lacrosse Field	-	-	-	-	-	-	22,119	52,478
Baseball Fields (Youth)	-	11,987	10,272	6,158	-	17,368	6,613	13,321
Baseball Fields (Adult)	-	179,804	11,300	59,530	-	63,683	18,140	42,557
Baseball Fields (Total)	18,934	-	-	-	-	-	12,737	-
Softball Fields (Youth)	-	-	-	89,295	-	47,762	9,255	22,728
Softball Fields (Adult)	-	5,288	8,071	35,718	-	13,646	12,083	22,888
Softball Fields (Total)	27,049	-	-	-	-	10,614	-	-
Tee Ball	-	-	-	35,718	-	-	13,045	43,360
Tennis Court	23,668	18,337	2,306	3,601	-	3,474	-	-
Basketball Court	21,038	11,460	8,071	5,002	-	6,588	6,037	9,002
Volleyball Court	21,038	-	-	7,203	-	10,055	-	-
Racquetball Court	18,934	91,683	-	22,509	-	11,941	-	-
Multiuse courts	-	-	8,071	-	-	-	15,214	35,961
Running tracks	-	-	-	-	-	-	-	-
Swimming Pool	-	183,365	28,250	20,008	-	17,368	31,600	61,500
Splash Pad/Play Area	94,672	-	-	-	-	191,049	-	-
Skate Parks	-	-	113,000	-	-	-	-	-
Indoor recreation	-	-	22,600	-	-	-	-	-
Performance Amphitheater	31,557	-	-	-	-	191,049	-	-
Community Garden	189,344	-	-	-	-	191,049	28,605	71,991
Dog Park	94,672	179,804	56,500	-	-	47,762	40,000	81,965
Walking Trails (Hardscape)	-	-	-	-	-	3,323	-	-
Walking Trails (LF or Miles)	54,098	10,786	-	-	-	6,368	-	-
Concessions	-	-	-	-	-	-	-	-
Restrooms	-	-	-	-	-	-	-	-
Pavilions/ Picnic shelters	-	-	-	-	-	-	-	-
Community centers	-	-	-	12,756	-	-	-	-
Maintenance facilities	-	-	-	-	-	-	-	-
Fishing	63,115	-	-	12,005	-	191,049	-	-
Golf	-	-	-	-	-	95,525	-	-
Disc Golf	189,344	-	-	-	-	95,525	-	-
Picnic Area	5,738	-	-	3,601	-	-	-	-
Picnic Table	1,491	528	-	-	-	-	-	-
Grill	5,410	-	-	-	-	-	-	-
Boat Ramp	31,557	26,195	-	-	-	191,049	-	-
Canoe & Kayak Launch	189,344	-	-	-	-	191,049	-	-
Resource based park	-	-	-	-	-	-	-	-
Roller hockey	-	-	-	-	-	-	-	-
Beach access points	-	-	-	-	-	-	-	-
Canoe & Kayak Launch	-	-	-	-	-	-	-	-



Online Survey Results

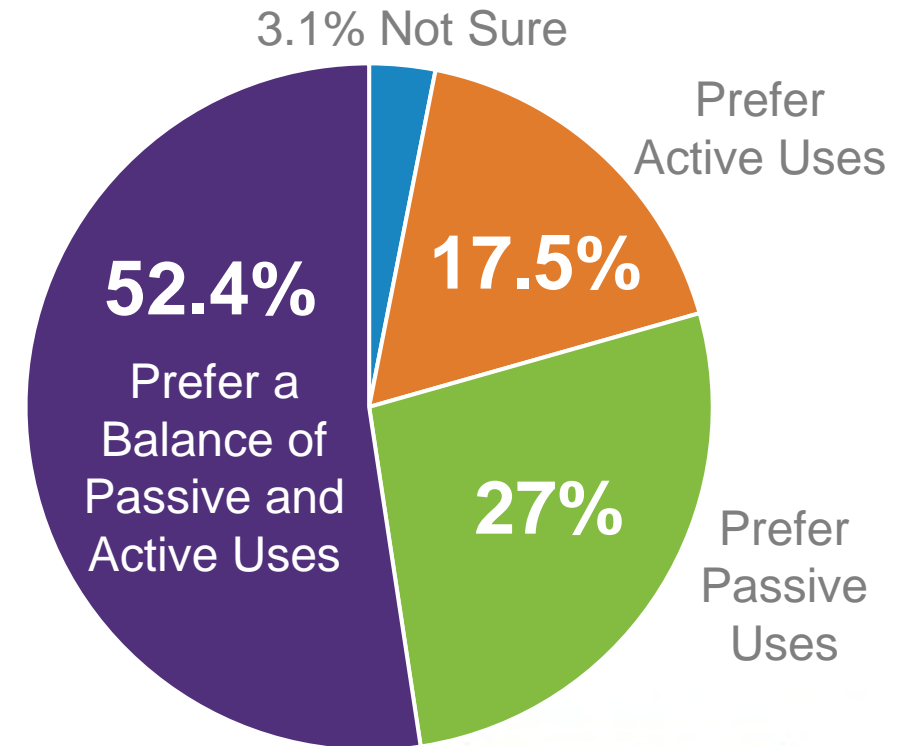
The online survey was active February 1st - March 11, 2023.
1,044 responses and 449 written comments were collected:

Demographics:

- 79.6% of respondents were residents of Port St. Lucie
- Every neighborhood across city represented; with 27% from adjacent Torino neighborhood
- Largest age group of respondents was the 35-44 years old group (32.5%)
- Second largest was the 25-34 age group (21%).

Results:

- A majority (61%) of respondents have children in their household under the age of 18
- 49% of respondents visit a park more than once a week.

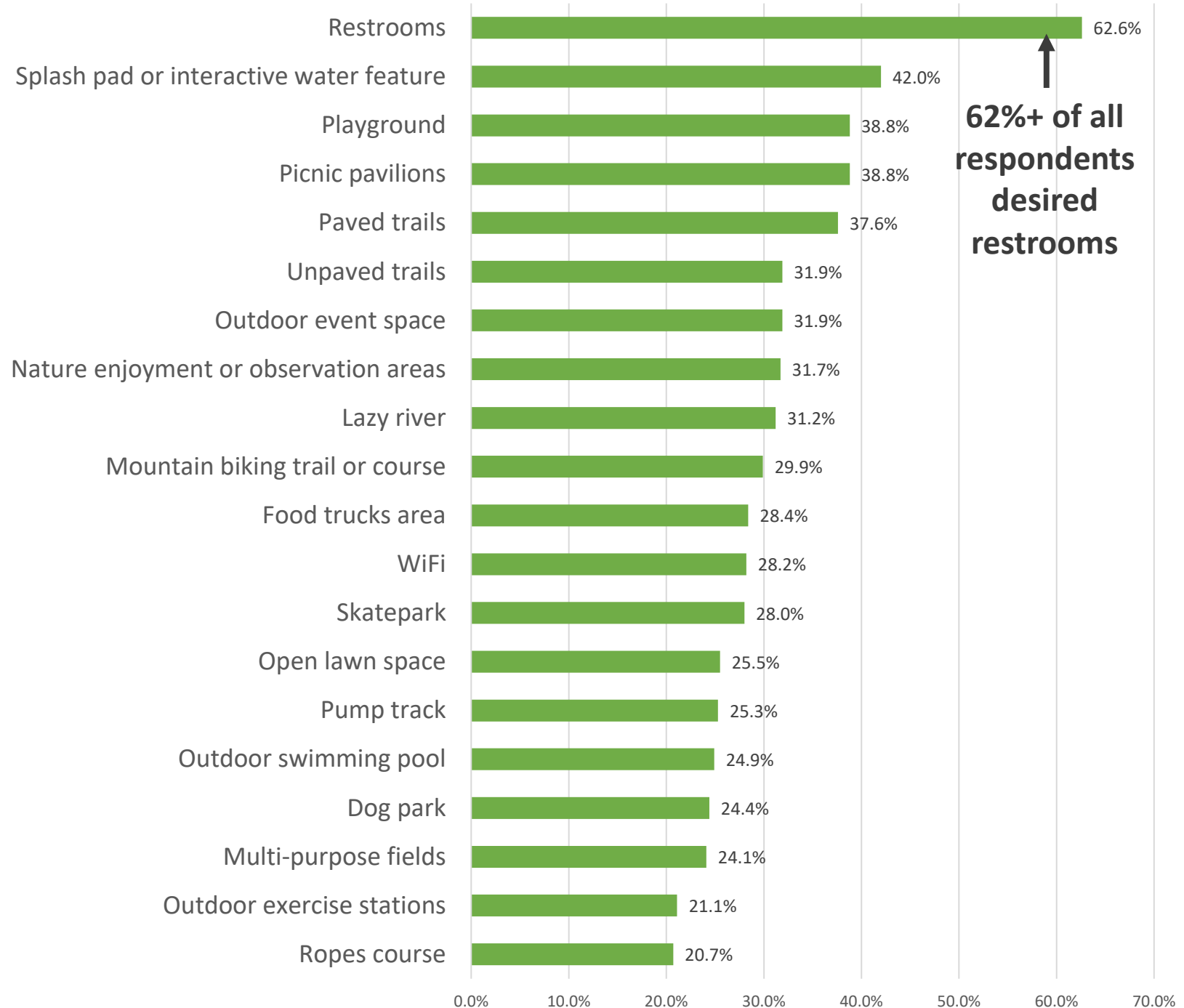


Online Survey Results

Top 20 Most Desired Amenities

Results:

- Respondents were allow to select as many items as they would like
- Clear lead with Restrooms being a highly desired amenity
- Top 10 are majority passive use amenities
- Low desire ranking does not mean there is not community need for individual amenities types



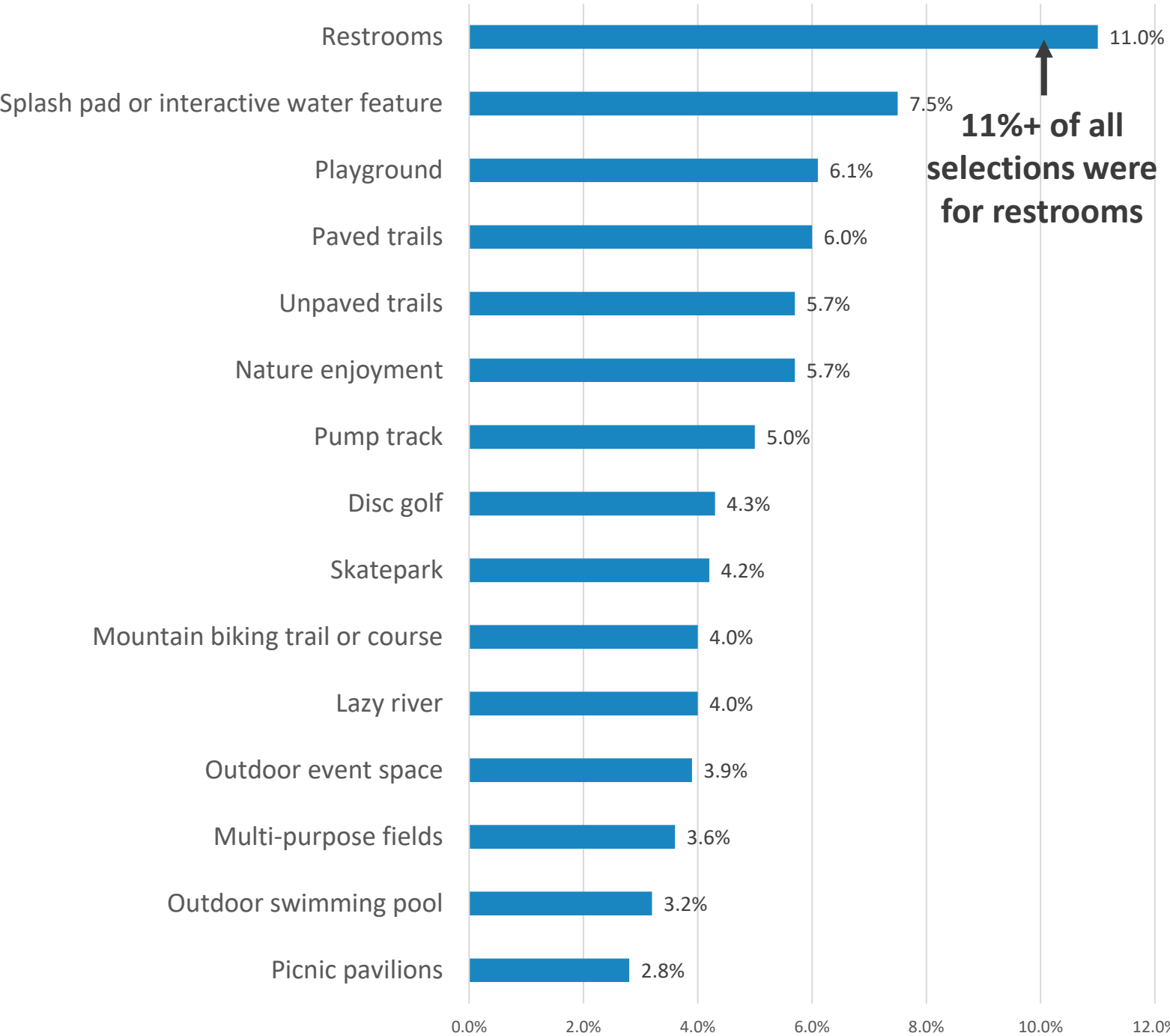
62%+ of all respondents desired restrooms

Online Survey Results

Top 15 Most Important Amenities

Results:

- Respondents were allow to select up to four (4) options
- Clear lead with Restrooms having 11% of all selections
- Top 10 are majority passive use amenities and adventure recreation
- Low importance ranking does not mean there is not community need for individual amenities types



Public Input Findings

Community Workshops

PUBLIC INFORMATION MEETINGS

Tuesday, Jan. 17 6-8 p.m. 2023
Virtual meeting: Visit our website at www.CityofPSL.com/TorinoRegionalPark. Preregistration is required.

Thursday, Jan. 19 6-8 p.m. 2023
In-person meeting: West Gate K-8 School, cafeteria 1050 NW Cashmere Blvd.

Torino Regional Park

The public is invited to meet with City staff to provide feedback on the Conceptual Master Plan for Torino Regional Park. Join us for a presentation on the project and to provide input for the possible park amenities.

Visit our website: www.CityofPSL.com/TorinoRegionalPark

1. Which activities does your household currently participate in and which activities would you like to see at Torino Regional Park?

Chart 3: Community Workshop – Most Currently Used Recreation Facilities (number of selections)

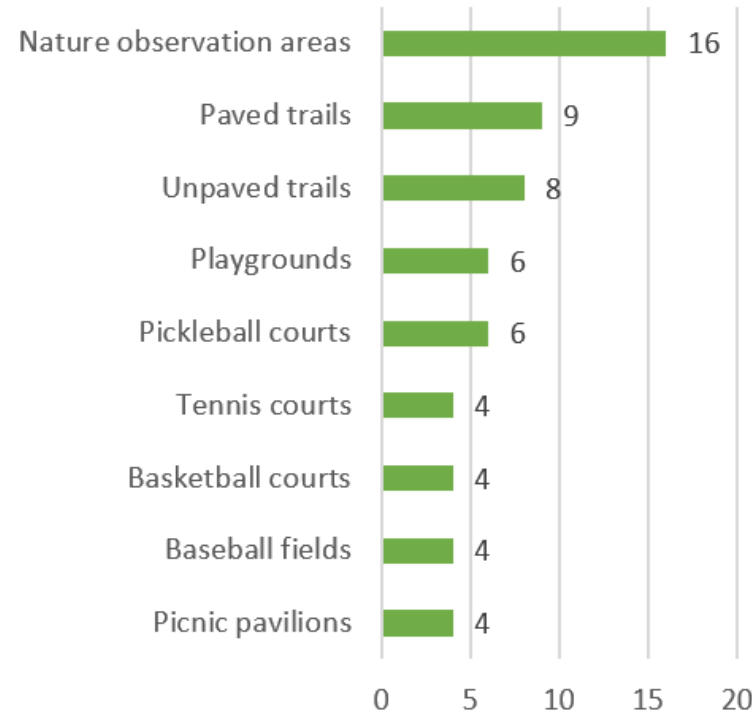
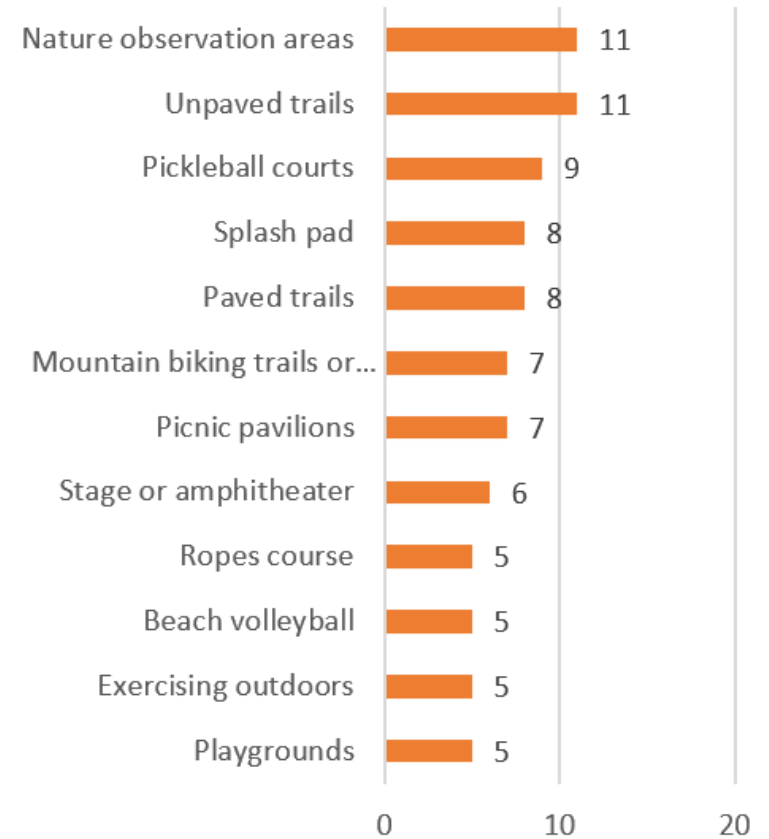


Chart 4: Community Workshop – Recreation Facilities Most Needed (number of selections)

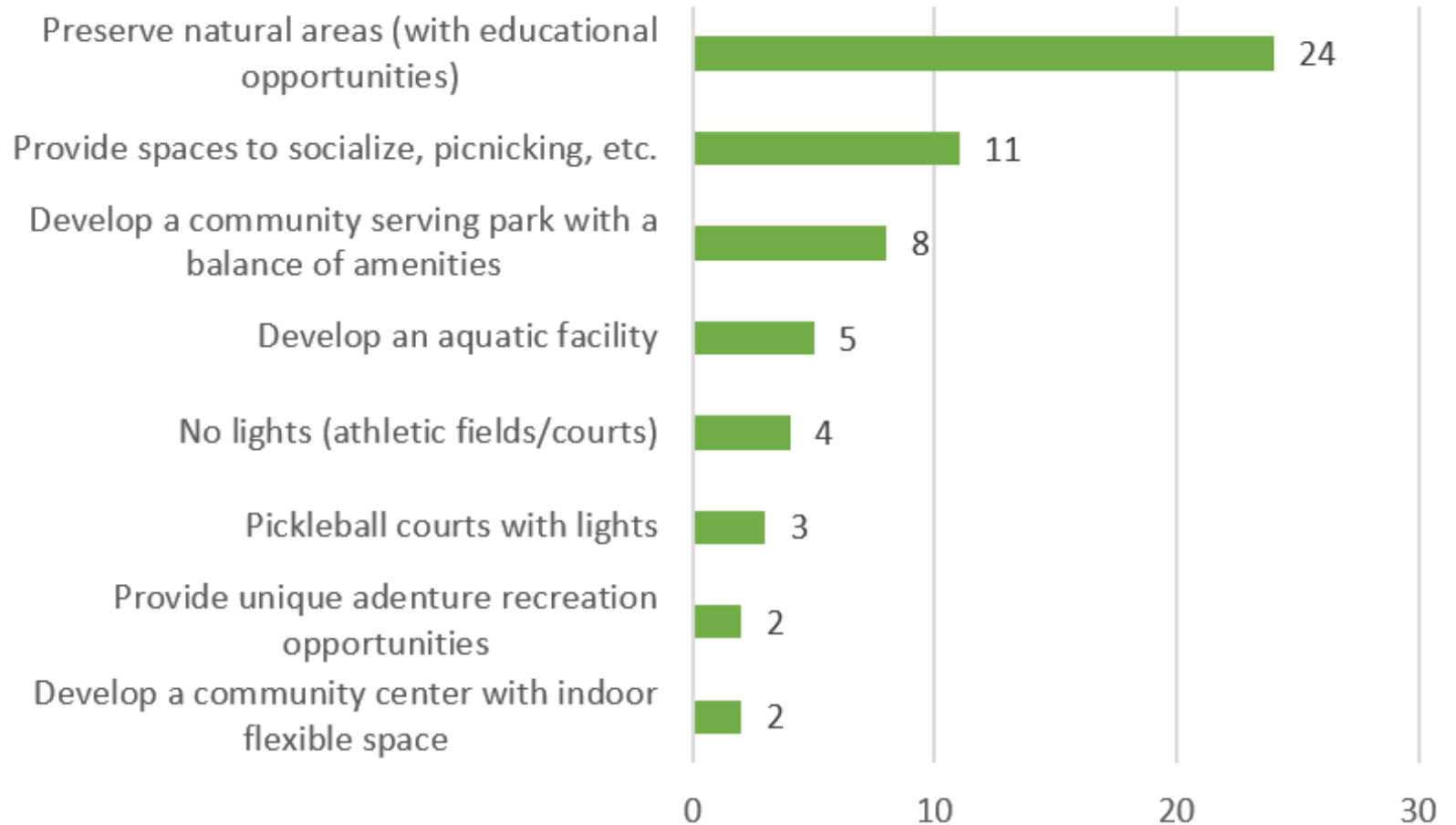


Public Input Findings

Community Workshop

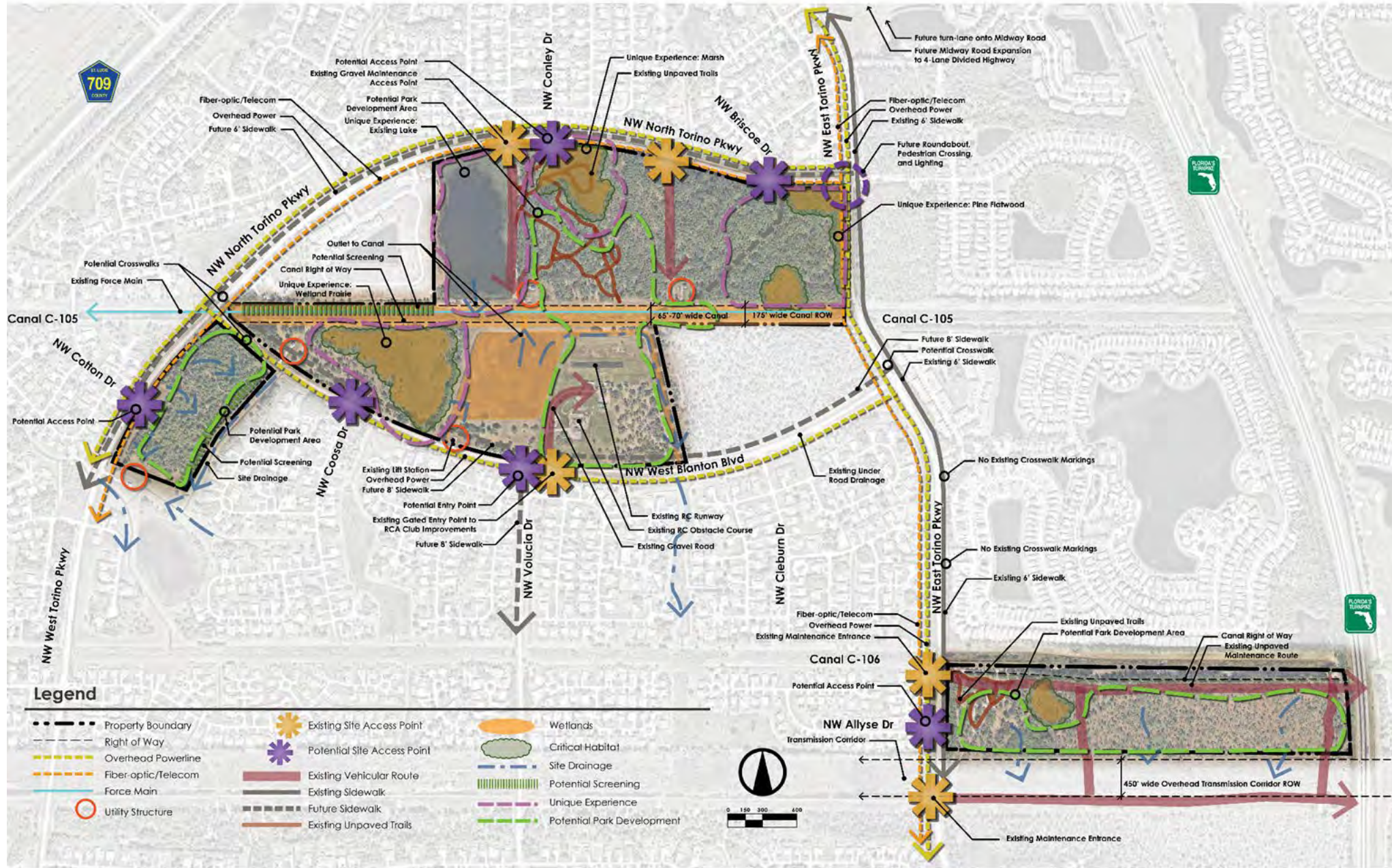


Which opportunity do you feel is most important? (number of votes)



Challenge & Opportunities Diagram

- Wet Prairie, Hydric Pine Flatwood and Marshes highlight several unique experiences on-site
- Several existing utility structures throughout site
- Over 32 acres of wetland (orange)
- Several potential areas exist that are conducive to development of park amenities and infrastructure



Public Input Findings

Quantitative research

- Level of Service assessment
- Priority Investment Rating
- Needs Assessment Summary

Qualitative research

- Interviews
- Online Survey
- Community Workshops

Observational

- Community Park elements – 2019 Masterplan
- Site Observations – feasibility / constructability

Higher
Ranking of Need or Priority
Lower

Technique	Quantitative						Qualitative					Observational	
	Facilities LOS (2019 System MP)	Priority Investment Rating (2019 System MP)	Needs Assessment Summary (2019 System MP)	SFIA: Participation Trends	Florida SCORP	Recreation Trends	Stakeholder Input	Online Survey (most desired)	Online Survey (most important)	Community Workshop (currently use)	Community Workshop (most need)	Community Park (Prototypical Amenities & Upgrade Checklist; 2019 System MP)	Site Observations (feasibility & constructability)
Amenity Type													
Paved trails	High	High	High		High	High	High	High	High	High	Medium	High	High
Unpaved trails	High	High	High		High	High	High	High	High	High	High	Medium	High
Playground	High	Medium	Low		High	Medium	Medium	High	High	Medium	Low	High	High
Picnic shelters	High	Medium	Low		High	Medium		High	Medium	Low	Medium	High	High
Multipurpose fields	High	Low	Low	High	Low	High	High	Low	Medium			High	High
Splash pad	High	Medium	Medium			Medium	High	High	High			High	Medium
Basketball courts	High	Low		High	High	High		Low		Low		High	High
Pickleball courts		Low		High		High	High	Low		Medium	High	Medium	High
Recreation Center	High	Medium	Medium	High		Medium	High					High	Medium
Leisure pool / lap lanes	High	Medium	Medium	Medium	Medium	Medium		Medium	Medium			Low	Medium
Tennis courts	Medium	Low		High		Medium		Low		Low		High	High
Dog park	Low	High	High		Medium	Medium		Low				Medium	Medium
Restrooms						High		High	High			High	High
Exercise stations/fitness court		Medium		Medium		High		Low			Low	High	High
Baseball fields	Medium	Low			High	Low		Low		Low		High	High
Disc golf course	High	Low				Medium	Medium	Low	Medium			Low	High
Skatepark		Low	Low			Medium	High	Medium	Medium			Low	Medium
Beach volleyball courts	High	Low				Medium		Low			Low	Medium	High
Softball fields	High	Low				Low		Low				High	High
Open space/event lawn						Medium		Medium	Medium			High	High
Fishing pier				High	Medium	High						Low	Low
Wi-Fi						High		Medium				High	Low
Food truck area						High		Medium				Medium	Medium
Kayak launch				Medium	Medium	Medium						Low	Low

Level of need/priority = High Medium Low

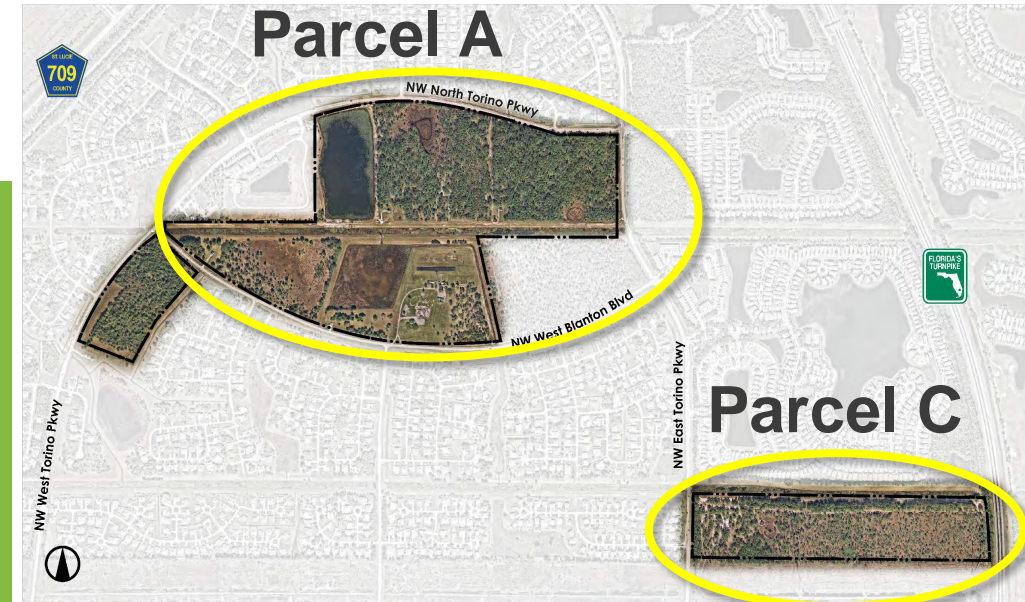
3 Park Programming and Anticipated Amenities



Anticipated Amenities – Parcels A & C

Final list is subject to additional public input, stakeholder input, site constraints, budget, and Council approval

- Paved multi-use trail and boardwalks
- Unpaved nature hiking trails
- Destination playground and smaller playground
- Picnic shelters; large and small
- Multipurpose fields
- Splash pad
- Covered basketball courts
- Pickleball courts
- Tennis courts
- Dog park
- Restrooms
- Exercise stations or fitness court
- Baseball fields
- Disc golf course
- Skatepark
- Beach volleyball courts
- Baseball and softball fields
- Open lawn space
- Fishing pier
- Wi-Fi
- Food truck area
- Kayak launch



Anticipated Amenities – Parcel B

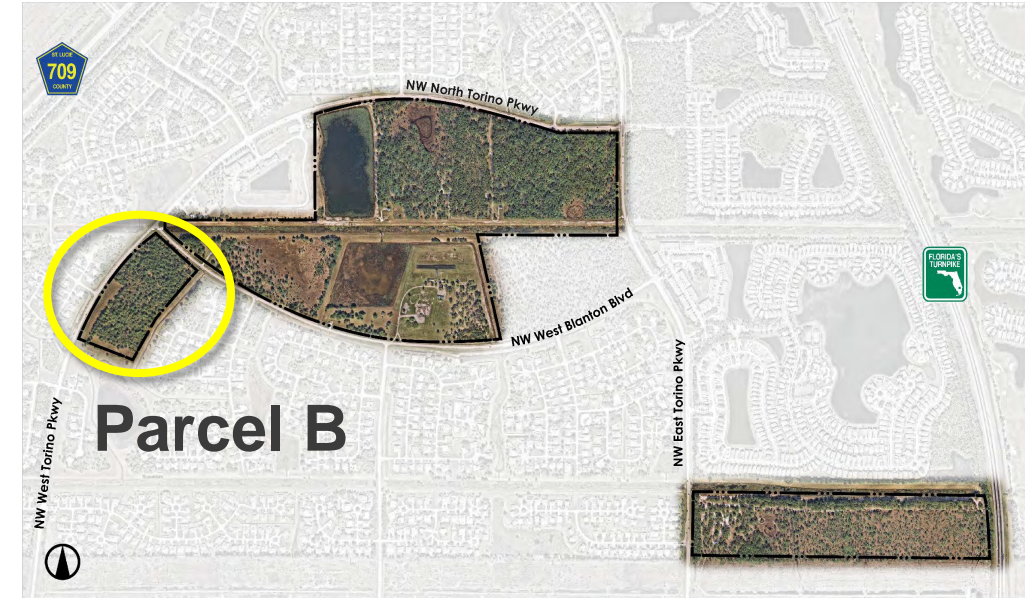
- Final list is subject to additional public input, stakeholder input, site constraints, budget, and Council approval.
- Proposed amenities for Parcel B may be constructed by others.

- Library
- Aquatics is a possibility

Additional Amenities

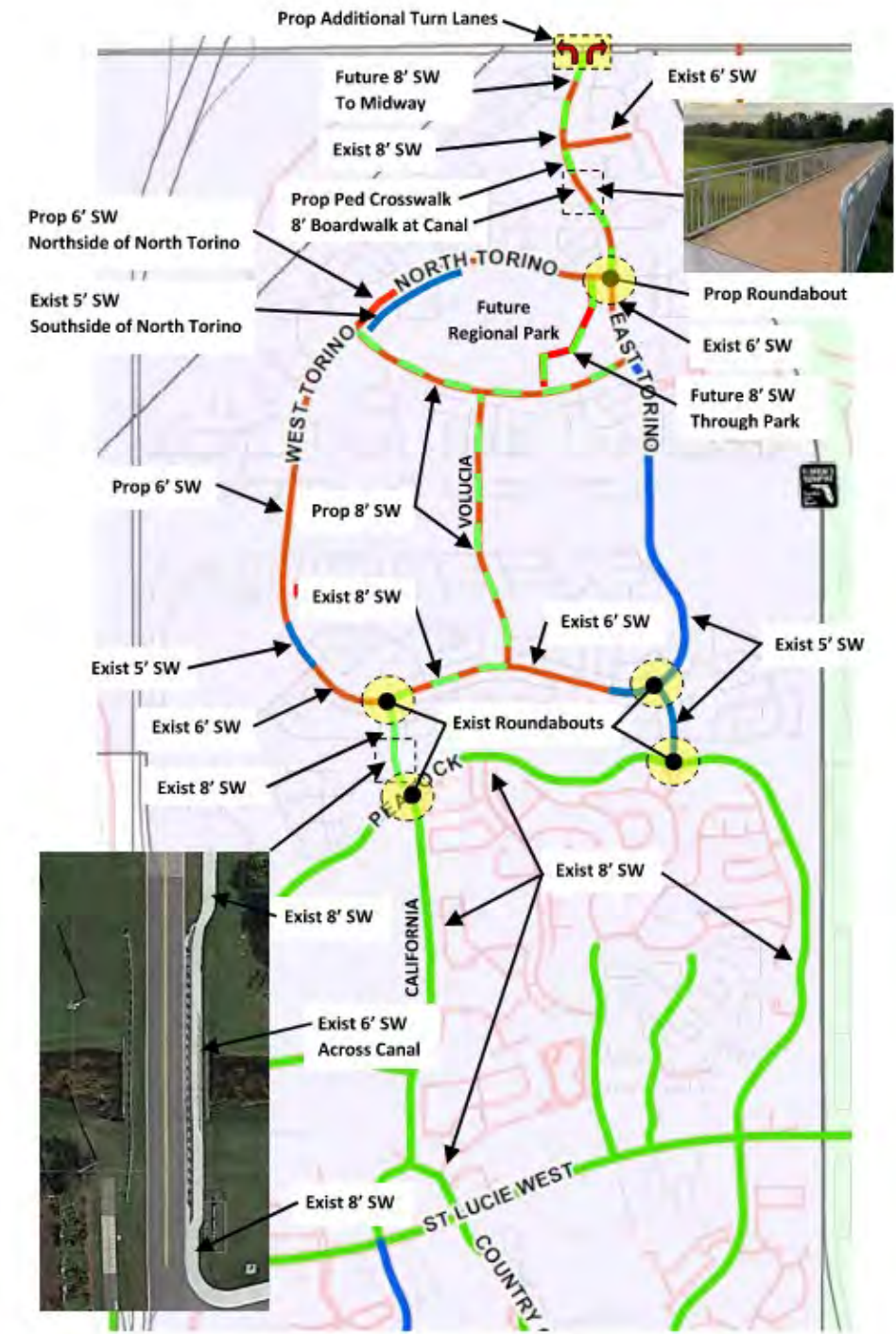
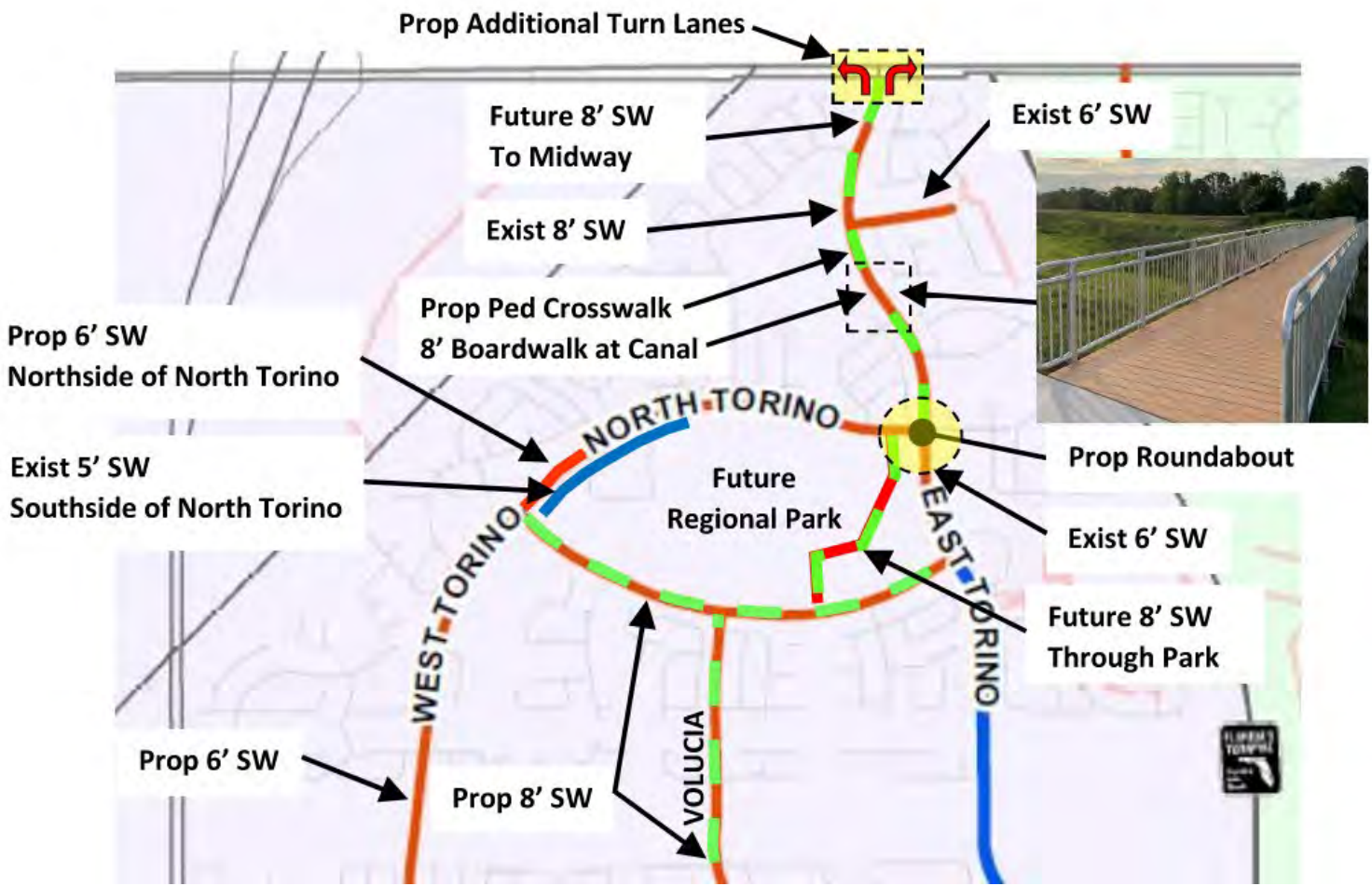
1. May be developed on any of the three parcels (A, B, or C)
2. These include:

- Potential for community fitness / recreation center
- County school bus loop / bus pick-up / drop-off
- Shared parking lots to support facilities



4 City Public Works Presentation

Transportation Improvements



Project Website



SCAN ME



Q&A

Utilize the Q&A Feature,
submitted questions will be
reviewed at this time.