

Tips to reduce storm water runoff pollution from your property.

- 1) Keep dumpster area clean and lids closed. Do not dispose of liquid waste in dumpsters or hose dumpsters out.
- 2) Materials stored outside should be covered from the weather.
- 3) Trash should be picked up and properly disposed of before it enters into the storm system.
- 4) Your storm drains or storm system is NOT an acceptable place to dump waste or cleaning materials.
- 5) Pour wash water and other non-hazardous materials in a utility sink, not into the storm system.
- 6) All hazardous waste should be dropped off at a City Collection day, or the SLC landfill.

Remember...

When it Rains, It Drains

For more information on storm water runoff pollution, please go to the following links.

<http://www.cityofpsl.com/npdes/index.html>

<http://www.dep.state.fl.us/mainpage/sitemap.htm>

<http://www.sfwmd.gov>

To report storm water runoff pollution please call the City Storm Water Hotline at

772-871-5100

For more info on hazardous waste collection days, go to the following webpage.

<http://www.cityofpsl.com/kpslb/index.html>

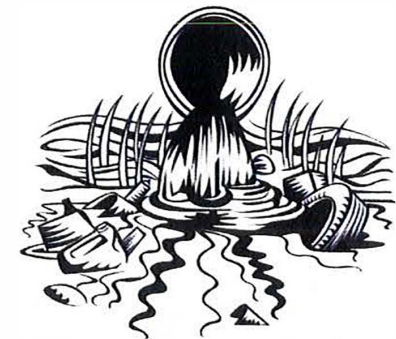
http://www.stlucieco.gov/solid_waste/hh_hazard_waste.htm

City of Port St. Lucie



Storm Water Runoff Pollution

When it Rains it Drains



Do you know where the rainwater that falls on your property drains?

As rainwater lands on your property it makes it's way to your site storm system, were some pollutants are removed. From there it discharges into the city storm system, and eventually makes its way to the river.

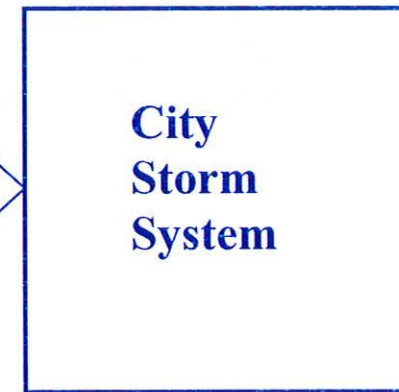
Do you know the contaminants it picks up on the way?

It picks up all the contaminants that are on the ground. Whether it is trash, cleaning agents, fertilizers, paints, or other substances spilled or dumped on the ground.

Do you know what you can do to help reduce storm water runoff pollution?

You can use good housekeeping techniques on your property to reduce storm water runoff pollution. Please see tips listed.

Know Your Flow



River